



The Morning Email: Treasuries

Table of Contents

- Pg 1 Important Econ Releases, Highs & Lows

- Pg 2 Quotes

- Pg 3 Duration, DV01s, Curve Spreads, CF

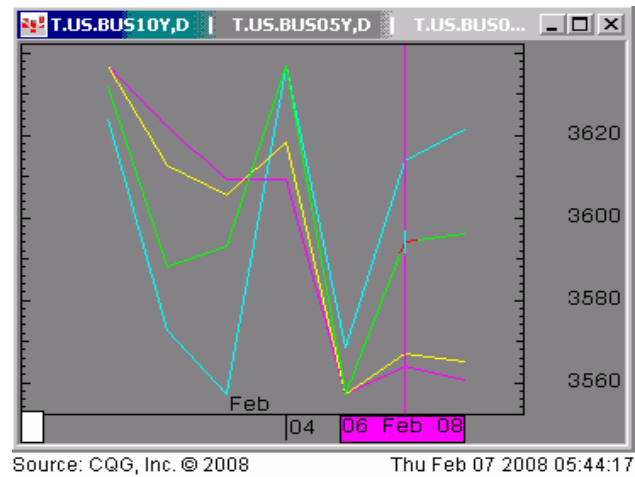
- Pg 4 Hedge Ratio's

- Pg 5 Closes: 2pm CST vs this Morning

- Pg 6 Cash Duration Matrix

- Pg 7 Tic for Tic & Box for Box Matrix

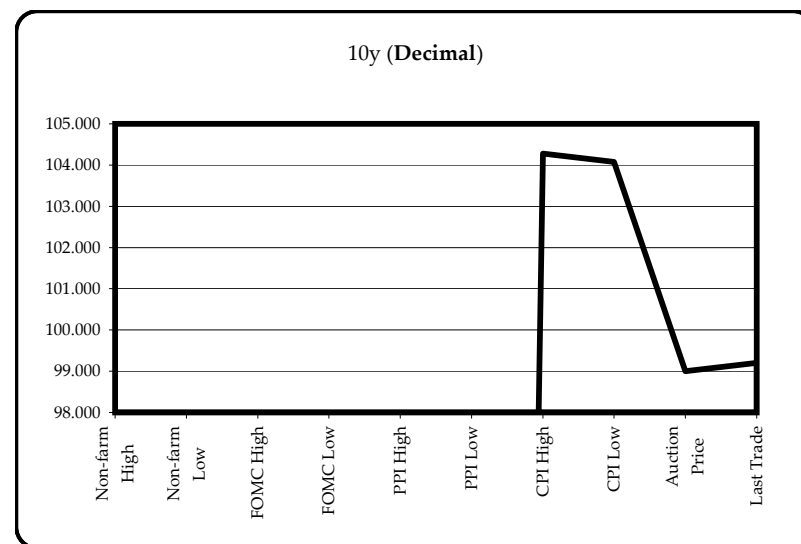
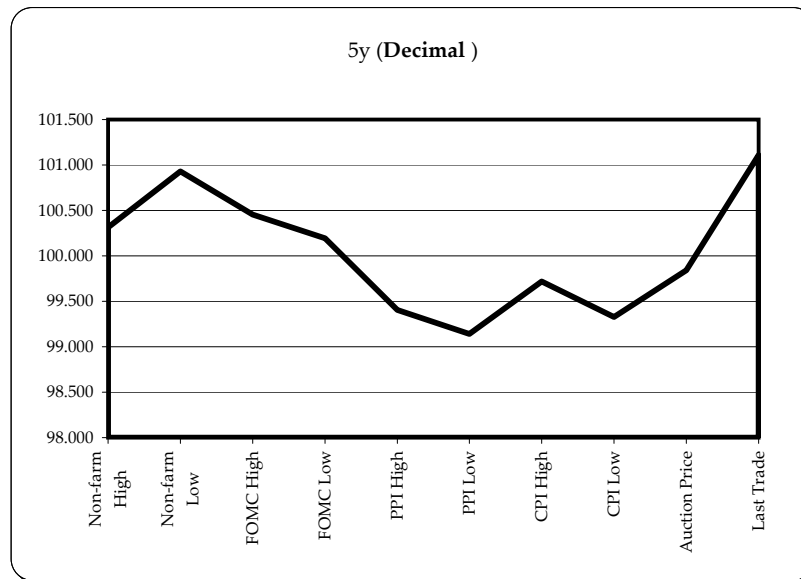
Daily Yield Curve



Want something added? Let me know: jgoulding@ghco.com
Disclaimer: All information within this newsletter is meant for internal use at GH Trader's LLC, only. All information has been recorded to the best of my ability. This material is based upon information that I consider reliable, but I do not represent that it is accurate or complete.

Economic Releases - 32nds					
	5y	10y	ZNH8	ZBH8	Date
Non-farm High	100.1000	0.000	116.225	120.09	2/1/2008
Non-farm Low	100.2975	0.000	117.185	119.03	2/1/2008
FOMC High	100.1450	0.000	117.000	119.27	1/31/2008
FOMC Low	100.0625	0.000	116.210	119.08	1/31/2008
PPI High	99.1300	0.000	116.030	119.17	1/15/2008
PPI Low	99.0450	0.000	115.235	119.02	1/15/2008
CPI High	99.2300	0.000	116.140	119.31	1/16/2008
CPI Low	99.1050	0.000	115.275	119.03	1/16/2008
Auction Price	99.2697	99.000			
Last Trade	101.0350	99.065	117.155	119.18	2/7/2008 5:55

Auctions - 32nds				
	2 y	5y	10y	30y
Auction Price	99.250	99.270	99.000	105.103
Auction Yield Stop	2.237	2.909	3.620	4.666
Actual Auction Date	1/28/2008	1/29/2008	2/6/2008	11/8/2007



Notes: Cash and futures are adjusted for roll.
 Release times are from release to 2pm cdt
 {Dec07 to Mch08 Futures roll: ZF = (-12); ZN = (-25); ZB = (+1) [tics]}
 r = reopen

	Last	Net	32 nds			Volume	SYM NAME
			High	Low	Open		
TUAH8	107.025	0.0	107.030	107.005	107.015	11,784	2y Fut
FVAH8	113.270	0.1	113.300	113.230	113.260	34,751	5y Fut
TYAH8	117.155	0.1	117.210	117.100	117.155	92,567	10y Fut
USAH8	119.180	0	119.260	119.090	119.210	17,251	30y Fut
	Last	Net	High	Low	Open	Volume	SYM NAME
BUS02P	100.127	0.5	100.137	100.115	100.127	na	2y Cash
BUS05P	101.032	2.0	101.060	100.317	101.030	na	5y Cash
BUS10P	99.055	(604.5)	99.120	99.005	99.075	na	10y Cash
BUS30P	110.145	(5)	110.265	110.045	110.225	na	30y Cash
	Last	Net	High	Low	Open	Volume	SYM NAME
BUS02Y	1.915	(0.90)	1.956	1.899	1.956	na	2y Yield
BUS05Y	2.633	(1.10)	2.664	2.616	2.661	na	5y Yield
BUS10Y	3.596	0.20	3.622	3.571	3.611	na	10y Yield
BUS30Y	4.360	0.60	4.384	4.341	4.361	na	30y Yield

	Libor\$ ^	Tbill	CP ^^
1M	3.165	2.088	3.170
3M	3.096	2.084	3.130
6M	2.978	2.087	3.020

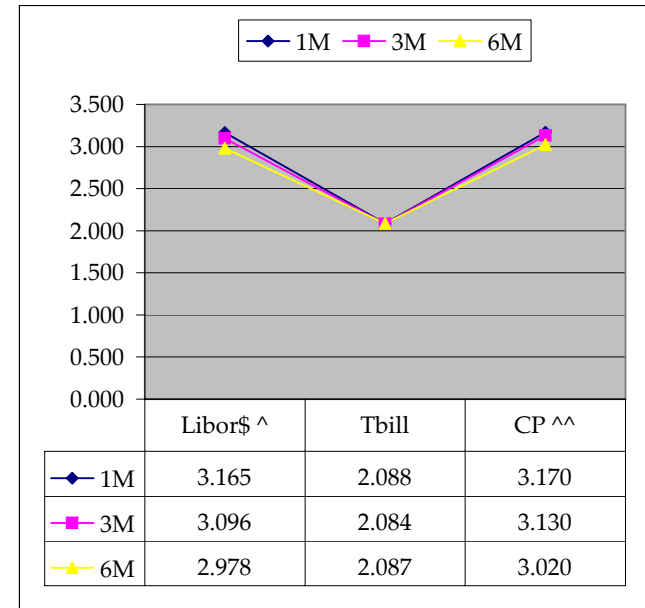
	Libor\$ ^	Repos
0/N	3.055	2.150
1week	3.118	2.950
2week	3.131	2.450

	TSY	Swap	ED Pks ^^
2y	1.914	74.50	2.806
5y	2.634	77.50	
10y	3.595	63.00	

Red pack / Blue pack is a 2/5 proxy
 Red pack / Gold pack is a 2/10 proxy
 Blue pack / Gold pack is a 5/10 proxy

Notes

^Quoted in US Dollars
 ^^CP = Commercial Paper
 ^^ED Pks are colored for pack identifications. Example, the red pack is a 2-yr proxy and is colored red.
 Lastly, SYM = Symbol



	2/5	Rd/Blu Pk Difference
	72.0	#VALUE! #VALUE!
	2/10	Rd/Gld Pk Difference
	168.2	#VALUE! #VALUE!
	5/10	Blu/Gld Pk Difference
	96.2	#VALUE! #VALUE!

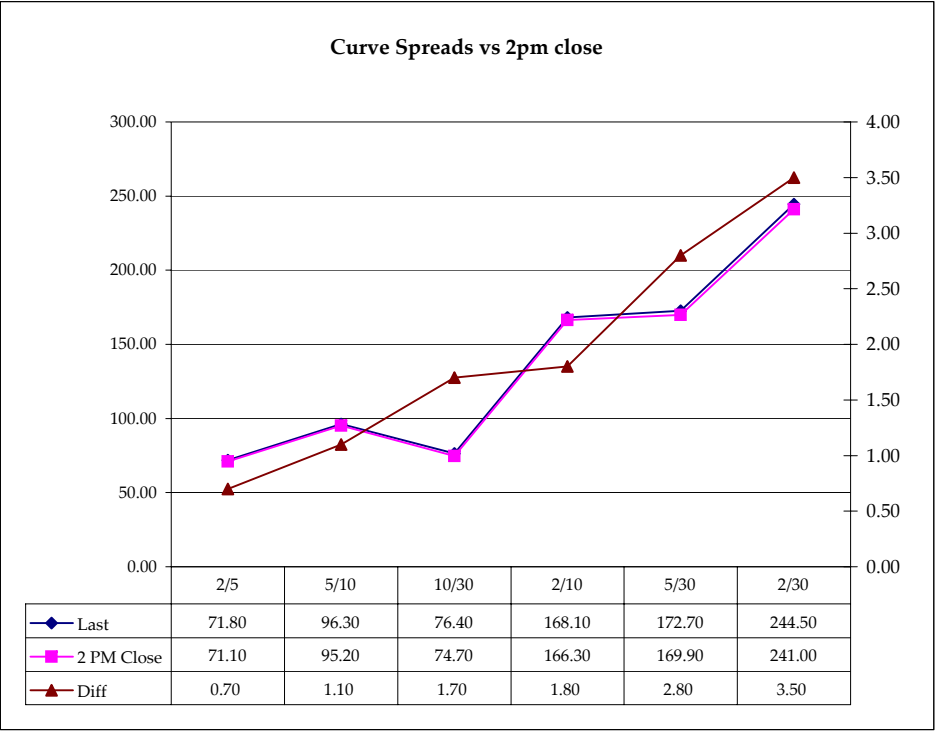
	M Duration	DV01 32	DV01 \$	DV01 Box	CF
30y	15.71	5.68	\$1,775	11.36	n/a
10y	8.24	2.66	\$831	5.32	n/a
5y	4.61	1.50	\$470	6.02	n/a
2y	1.93	0.62	\$194	2.48	n/a
ZB	10.26	4.04	\$126	4.04	0.8633
ZN	5.84	2.22	\$69	4.45	0.8747
ZF	3.89	1.43	\$45	2.87	0.8705
ZT	1.78	0.62	\$19	2.46	0.9336

Yield Curve Spreads			
	Last	2pm close	Diff
2/5	71.80	71.10	0.70
5/10	96.30	95.20	1.10
10/30	76.40	74.70	1.70
2/10	168.10	166.30	1.80
5/30	172.70	169.90	2.80
2/30	244.50	241.00	3.50

DV01 32, said differently, is "how many TICS are in a basis point?".

Example, If ZN moves 1~basis point, then, it's moved 2.08 tics (Today, 10/25/07, the value in the box is 2.08).

Since ZN trades in half tics, then, 4.17 boxes = 1 basis point in ZN. (Again, today, 10/25/07, the value in the box is 4.17). Of course the values will be different as you look at this. But, they won't be that much different. So, I think you can get the idea I'm trying to get across.



Notes

CF = Conversion Factor

MDuration = Modified Macaulay Duration

MDuration & DV01s for Futures are based on proxy issue (CTD)

DV01 Box = Dollar Value of 1 basis point move per Box

US Financial Futures / Eurex Bond

	ZB	ZN	ZF	ZT
Bund (H)	0.980	1.800	2.800	3.100
Bobl (H)	0.540	0.996	1.536	1.692
Shatz (H)	0.223	0.405	0.625	0.688

US Treasuries v US Financial Futures

	2y	5y	10y	30y
ZB	1.53	3.72	6.58	14.04
ZN	2.79	6.76	11.96	25.55
ZF	4.33	10.50	18.57	39.64
ZT	5.03	12.21	21.60	46.12

US Financial Futures

	ZB	ZN	ZF	ZT
ZB		1.819	2.823	3.285
ZN	0.550		1.552	1.805
ZF	0.354	0.644		1.163
ZT	0.304	0.554	0.860	

US Treasuries v Eurex Bonds

	2y	5y	10y	30y
Bund (H)	1.7	3.9	7.1	14.3
Bobl (H)	3.1	7.1	12.8	25.8
Shatz (H)	7.8	15.9	28.8	58.1

Eurex Bonds

	Bund (H)	Bobl (H)	Shatz (H)
Bund (H)	1.0	1.9	4.6
Bobl (H)	0.5	1.0	2.5
Shatz (H)	0.2	0.4	1.0

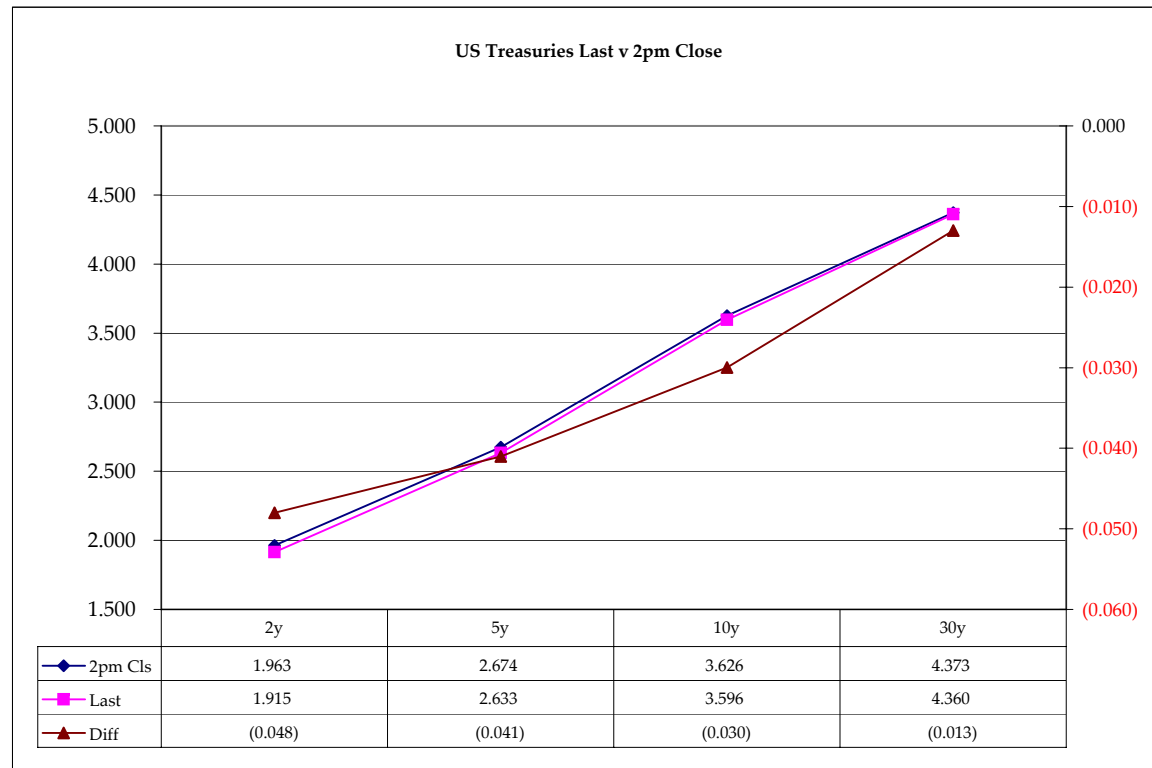
US Treasuries

	2y	5y	10y	30y
2y		2.426	4.291	9.162
5y	0.411		1.766	3.770
10y	0.233	0.565		2.135
30y	0.109	0.265	0.468	

Note: Any ratio with the Bund, Bobl, or Shatz is from Bloomberg. So, the Bloomberg hedge ratios, in this spreadsheet, are static. Meaning, I only update them once in a while but always on rolls. My hedge ratio's are live, meaning, they're updated in real-time.

	Cpn	Mty	Close 32	Close	Last	Diff	Basis		Roll		Close 32	Last
							Close	Last				
2y	2.125	1/31/10	100.1000	1.963	1.915	(0.048)				FVAH8	113.220	113.270
5y	2.875	1/31/13	100.2975	2.674	2.633	(0.041)	62.87	64.27		TYAH8	117.100	117.155
10y	4.250	2/15/18	98.305	3.626	3.596	(0.030)	-117.12	-113.93	+1.00	USAH8	119.12	119.180
30y	5.000	5/15/37	110.10	4.373	4.360	(0.013)	231.69	234.01	even / +.50			

Curve Spreads		
	Close bps	Last bps
2/5	71.1	71.8
5/10	95.2	96.3
10/30	74.7	76.4
2/10	166.3	168.1
5/30	169.9	172.7
2/30	241.0	244.5



Notes:
 Basis = (Cash Decimal - (Futures Decimal * CF))*32
 MDuration for Curve Spreads:
 Longer duration minus shorter duration
 32 = price is quoted in 32nds

Cash Duration Matrix

Cash Duration Matrix				
	2	5	10	30
2	100%			
5	42%	100%		
10	23%	56%	100%	
30	12%	29%	52%	141%
Cash Matrix [DV01 x Duration]				
	2	5	10	30
2	\$194			
5	\$196	\$470		
10	\$195	\$465	\$831	
30	\$218	\$521	\$930	\$1,775
Cash Matrix [DV01 over / (under) valued]				
	2	5	10	30
2				
5	(\$3)			
10	(\$1)	\$5		
30	(\$24)	(\$51)	(\$99)	
Cash Matrix [DV01 over / (under) as %]				
	2	5	10	30
2				
5	-1.41%			
10	-0.43%	0.99%		
30	-11.05%	-9.78%	-10.67%	

What is this? (1):
 2yr cash has X% duration of 5yr cash .

What is this? (2):
 - 2yr cash has DV01 of \$202
 - Multiply the 2yr DV01 by the percent duration to come up with what the 2yrs DV01 SHOULD be compared to the 5yr.

What is this? (3):
 - Now you can see the over/under value, based on the DV01, from contract to contract. In this example we are looking at the 2yr compared to the 5yr.

Or you can look at the over/under value as a percentage instead of dollar terms.

		Tic for Tic Matrix			
		2y	5y	10y	30y
ZT		1.01	2.44	4.32	9.22
ZF		0.43	1.05	1.86	3.96
ZN		0.28	0.68	1.20	2.55
ZB		0.15	0.37	0.66	1.40

		Box for Box Matrix			
		2y	5y	10y	30y
ZT		1.01	2.44	8.64	18.45
ZF		0.43	2.10	3.71	7.93
ZN		0.56	1.35	1.20	2.55
ZB		0.61	1.49	1.32	2.81

		2y	5y	10y	30y
2y		1.00	2.43	4.29	9.16
5y		0.41	1.00	1.77	3.78
10y		0.23	0.57	1.00	2.14
30y		0.11	0.26	0.47	1.00

		2y	5y	10y	30y
2y			2.43	2.15	4.58
5y		0.41		0.44	1.89
10y		0.47	2.26		2.14
30y		0.22	0.53	0.47	

		ZT	ZF	ZN	ZB
ZT		1.00	2.33	3.61	6.57
ZF		0.43	1.00	1.55	2.82
ZN		0.28	0.64	1.00	1.82
ZB		0.15	0.35	0.55	1.00

		2y	5y	10y	30y
ZT			2.33	7.22	26.28
ZF		0.43		1.55	5.65
ZN		0.14	0.64		3.64
ZB		0.04	0.18	0.27	