

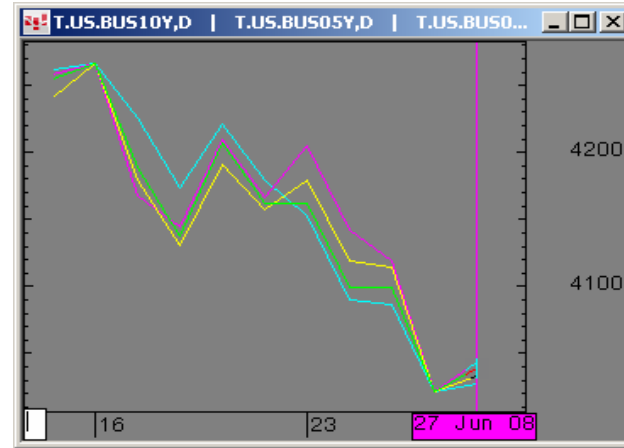


The Morning Email: Treasuries

Table of Contents

- Pg 1 Important Econ Releases, Highs & Lows
- Pg 2 Quotes
- Pg 3 Duration, DV01s, Curve Spreads, CF
- Pg 4 Hedge Ratio's
- Pg 5 Closes: 2pm CT vs this Morning
- Pg 6 Cash Duration Matrix
- Pg 7 Tic for Tic & Box for Box Matrix
- Pg 8 Key Money Rate, Spreads, Swaps, Packs
- Pg 9 Libor, Fed Funds (OIS), Repo, SONIA & EONIA Rates

Daily Yield Curve



Scale is for 10yr

Source: CQG, Inc. © 2008 Fri Jun 27 2008 05:51:11



Want something added? Let me know: jgoulding@ghco.com

Disclaimer: All information within this newsletter is meant for internal use at GH Trader's LLC, only. All information has been recorded to the best of my ability. This material is based upon information that I consider reliable, but I do not represent that it is accurate or complete.

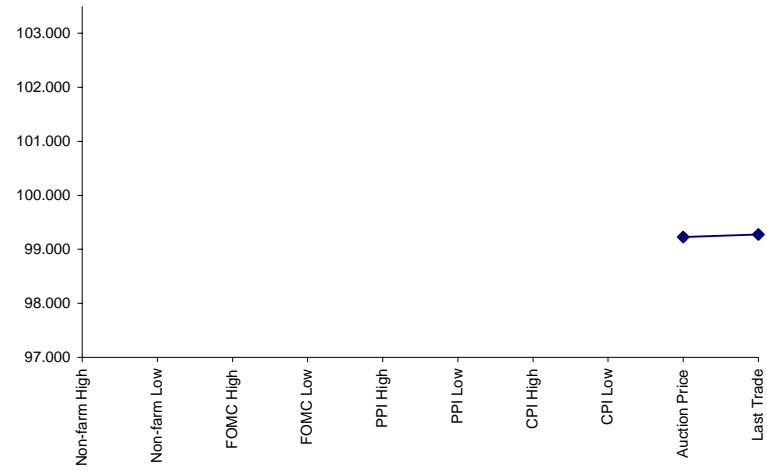
Economic Releases (32nds)

	5y	10y	ZNU8	ZBU8	Date
Non-farm High		99.240	114.085	114.270	6/6/2008
Non-farm Low		98.165	112.180	113.055	6/6/2008
FOMC High		100.275	113.233	115.352	4/20/2008
FOMC Low		100.020	112.241	114.267	4/20/2008
PPI High		97.165	112.000	112.235	6/17/2008
PPI Low		96.295	111.130	111.250	6/17/2008
CPI High		97.200	111.300	112.210	6/13/2008
CPI Low		96.300	111.025	111.260	6/13/2008
Auction Price	99.2252	99.157	na	na	
Last Trade	99.2770	98.220	113.195	114.315	6/27/2008 5:51

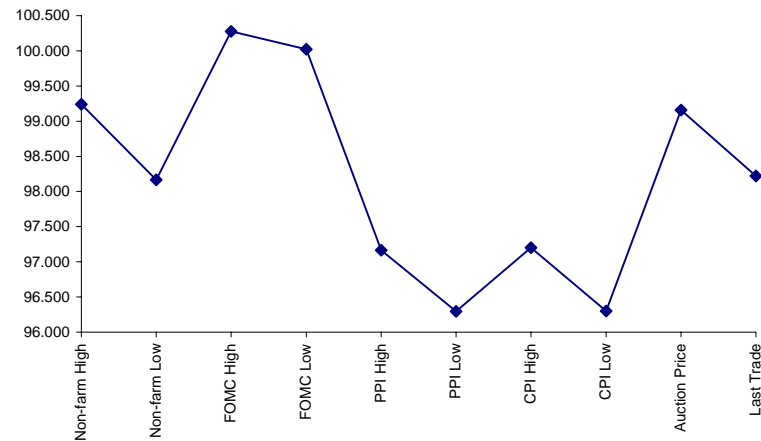
Auctions - 32nds

	2 y	5y	10y	30y
Auction Price	99.291	99.225	99.157	96.120
Auction Yield Stop	2.922	3.44	3.937	4.599
Actual Auction Date	6/24/2008	6/26/2008	5/7/2008	5/8/2008 r

5y (Decimal)



10y (Decimal)



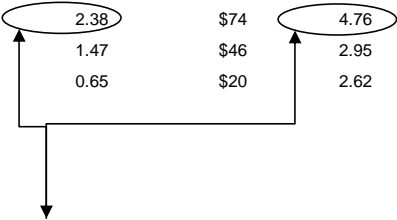
Notes:

- 1) Cash and futures are adjusted for roll.
- 2) Release times are from release to 2pm cdt
- 3) {Jun08 to Sep08 Futures roll: ZF = (-27 3/4); ZN = (-49 1/2); ZB = (-30 1/2) [tics]}

Quotes

		32 nds					
	Last	Net	High	Low	Open	Volume	Sym Name
TUAU8	105.142	(0.017)	105.185	105.122	105.170	60,375	2y Fut
FVAU8	110.102	0.000	110.160	110.065	110.107	79,787	5y Fut
TYAU8	113.195	(0.015)	113.275	113.165	113.205	99,189	10y Fut
USAU8	114.315	(0.01)	115.035	114.265	114.315	18,614	30y Fut
	Last	Net	High	Low	Open	Volume	Sym Name
BUS02P	100.112	(0.022)	100.150	100.097	100.132	na	2y Cash
BUS05P	99.277	(0.210)	100.017	99.242	99.245	na	5y Cash
BUS10P	98.205	(0.030)	98.270	98.195	98.230	na	10y Cash
BUS30P	96.120	(0.010)	96.160	96.055	96.160	na	30y Cash
	Last	Net	High	Low	Open	Volume	Sym Name
BUS02Y	2.686	0.032	2.726	2.626	2.65	na	2y Yield
BUS05Y	3.401	0.017	3.432	3.36	3.377	na	5y Yield
BUS10Y	4.039	0.018	4.051	4.014	4.021	na	10y Yield
BUS30Y	4.596	0.005	4.617	4.589	4.6	na	30y Yield

	M Duration	DV01 32	DV01 \$	DV01 Box	CF	
30y	15.99	5.02	\$1,568	10.04	n/a	30y
10y	8.08	2.56	\$801	5.13	n/a	10y
5y	4.56	1.49	\$466	5.96	n/a	5y
2y	1.93	0.62	\$194	2.48	n/a	2y
ZB	10.24	3.86	\$121	3.86	0.7771	ZB
ZN	6.47	2.38	\$74	4.76	0.8478	ZN
ZF	4.06	1.47	\$46	2.95	0.8928	ZF
ZT	1.93	0.65	\$20	2.62	0.9488	ZT



DV01 32, said differently, is "how many TICS are in a basis point?".

Example, If ZN moves 1-basis point, then, it's moved 2.38 tics (Today, 06/25/08, the value in the box is 2.38).

Since ZN trades in half tics, then, 4.75 boxes = 1 basis point in ZN. (Again, today, 06/25/08, the value in the box is 4.75). Of course the values will be different as you look at this. But, they won't be that much different. So, I think you can get the idea I'm trying to get across.

Notes

CF = Conversion Factor

MDuration = Modified Macaulay Duration

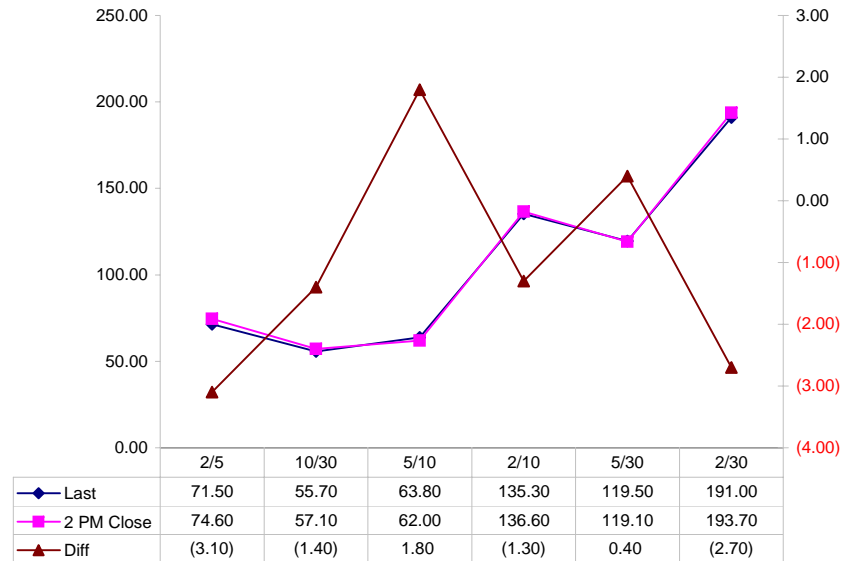
MDuration & DV01s for Futures are based on proxy issue (CTD)

DV01 Box = Dollar Value of 1 basis point move per Box

Yield Curve Spreads

	Last	2pm close	Diff
2/5	71.50	74.60	(3.10)
10/30	55.70	57.10	(1.40)
5/10	63.80	62.00	1.80
2/10	135.30	136.60	(1.30)
5/30	119.50	119.10	0.40
2/30	191.00	193.70	(2.70)

Curve Spreads vs 2pm close



US Financial Futures / Eurex Bond

	ZB	ZN	ZF	ZT
Bund (U)	1.033	1.681	2.900	3.500
Bobl (U)	0.563	0.948	1.550	2.000
Shatz (U)	0.248	0.431	0.700	0.800

US Financial Futures

	ZB	ZN	ZF	ZT
ZB		1.623	2.620	2.953
ZN	0.616		1.614	1.820
ZF	0.382	0.620		1.127
ZT	0.331	0.537	0.867	

Eurex Bonds

	Bund (H)	Bobl (H)	Shatz (H)
Bund (H)		1.8	4.3
Bobl (H)	0.6		2.4
Shatz (H)	0.2	0.4	

US Treasuries v US Financial Futures

	2y	5y	10y	30y
ZB	1.61	3.86	6.39	12.99
ZN	2.61	6.26	10.37	21.08
ZF	4.21	10.11	16.74	34.02
ZT	4.74	11.40	18.88	38.36

US Treasuries v Eurex Bonds

	2y	5y	10y	30y
Bund (U)	1.5	3.6	6.3	12.2
Bobl (U)	2.7	6.3	11.2	21.8
Shatz (U)	6.6	15.3	27.1	52.5

US Treasuries

	2y	5y	10y	30y
2y		2.402	3.979	8.086
5y	0.439		1.745	3.547
10y	0.251	0.604		2.032
30y	0.124	0.297	0.492	

Note: If you are looking at a matrix with Eurex products then those ratios are pulled from Bloomberg and are static. Meaning, I only update them once in a while but always on rolls. I calculate the other matrixes, with US products, everyday

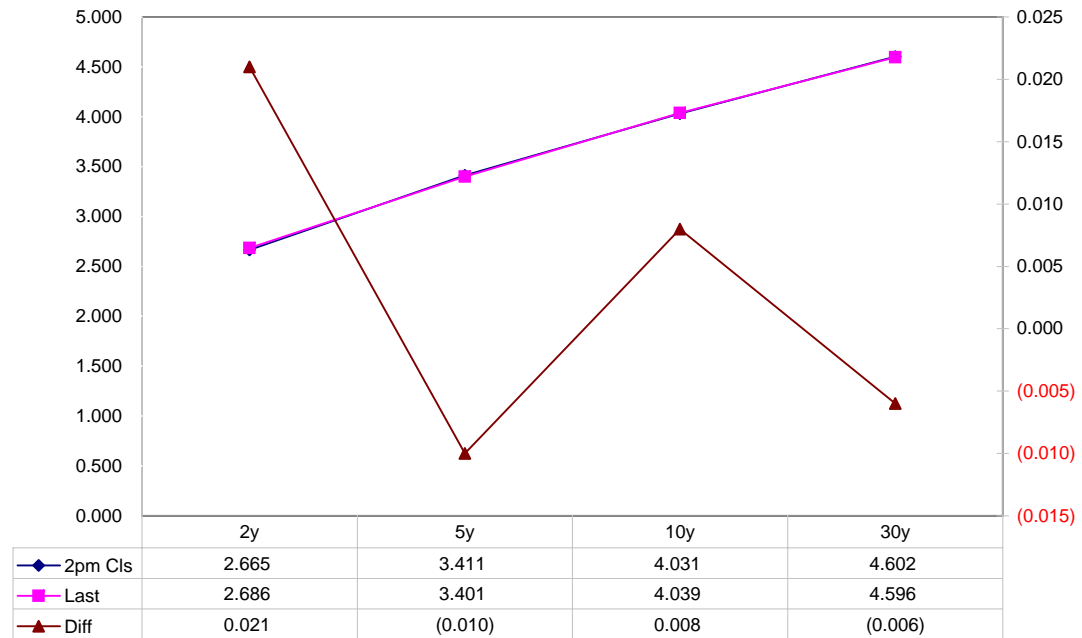
Closes: 2pm CT vs this Morning

	Cpn	Mty	Close 32	Close	Last	Diff	Basis			Close 32	Last	
							Close	Last	Roll			
2y	2.875	6/30/10	100.1300	2.665	2.686	0.021	9.61	9.76		105.1625	105.1420	TUAU8
5y	3.375	6/30/13	99.2675	3.411	3.401	(0.010)	42.94	43.94	+0.75 - 1.00	110.1025	110.1020	FVAU8
10y	3.875	5/15/18	98.235	4.031	4.039	0.008	76.05	75.82		113.210	113.195	TYAU8
30y	4.375	5/15/37	96.110	4.602	4.596	(0.006)	223.27	227.16		115.000	114.315	USAU8

Curve Spreads

	Close bps	Last bps
2/5	74.6	71.5
5/10	62.0	63.8
10/30	57.1	55.7
2/10	136.6	135.3
5/30	119.1	119.5
2/30	193.7	191.0

US Treasuries Last v 2pm Close



Notes:

Basis = (Cash Decimal - (Futures Decimal * CF))*32

MDuration for Curve Spreads:

Longer duration minus shorter duration

32 = price is quoted in 32nds

Cash Duration Matrix

	2	5	10	30
2	100%			
5	42%	100%		
10	24%	56%	100%	
30	12%	29%	51%	100%

What is this? (1):
 2yr cash has X% duration of 5yr cash .

Cash Matrix [DV01 x Duration]

	2	5	10	30
2	\$194			
5	\$197	\$466		
10	\$192	\$453	\$801	
30	\$189	\$448	\$793	\$1,568

What is this? (2):
 - 2yr cash has DV01 of X\$
 - Multiply the 2yr DV01 by the percent duration to come up with what the 2yrs DV01 SHOULD be compared to the 5yr.

Cash Matrix [DV01 over / (under) valued]

	2	5	10	30
2				
5	(\$3)			
10	\$2	\$13		
30	\$5	\$18	\$9	

What is this? (3):
 - Now you can see the over/under value, based on the DV01, from contract to contract. In this example we are looking at the 2yr compared to the 5yr.

Cash Matrix [DV01 over / (under) as %]

	2	5	10	30
2				
5	-1.63%			
10	1.24%	2.93%		
30	2.38%	4.08%	1.12%	

Or you can look at the over/under value as a percentage instead of dollar terms.

Tic for Tic Matrix

	2y	5y	10y	30y
ZT	0.95	2.28	3.92	7.67
ZF	0.42	1.01	1.74	3.40
ZN	0.26	0.63	1.08	2.11
ZB	0.16	0.39	0.66	1.30

	2y	5y	10y	30y
2y		2.40	4.13	8.09
5y	0.42		1.72	3.37
10y	0.24	0.58		1.96
30y	0.12	0.30	0.51	

	ZT	ZF	ZN	ZB
ZT		2.25	3.64	5.91
ZF	0.44		1.61	2.62
ZN	0.27	0.62		1.62
ZB	0.17	0.38	0.62	

Box for Box Matrix

	2y	5y	10y	30y
ZT	0.95	2.28	7.84	15.34
ZF	0.42	1.01	3.48	6.80
ZN	0.52	1.25	1.08	2.11
ZB	0.64	0.77	1.33	1.30

	2y	5y	10y	30y
2y		2.40	2.07	4.04
5y	0.42		0.43	1.68
10y	0.48	2.32		1.96
30y	0.25	0.59	0.51	

	ZT	ZF	ZN	ZB
ZT		2.25	7.28	11.81
ZF	0.44		1.61	5.24
ZN	0.14	0.62		1.62
ZB	0.08	0.19	0.62	

	Libor\$ ¹	Repo Rt ⁶			
0/N	2.498	1.930			
1week	2.469	1.800			
2week	2.470	2.000			
	Libor\$ ¹	Tbill	CP ²		
1M	2.471	1.386	2.590		
3M	2.791	1.725	2.830		
6M	3.154	2.163	3.180		
	TSY	Swp	Swp Rate ⁵	ED Pks ³	TSY - ED Pk ⁴
2y	2.693	94.00	3.63	4.324	1.631
5y	3.404	94.25	4.35	5.100	1.696
10y	4.039	72.25	4.76	5.231	1.192

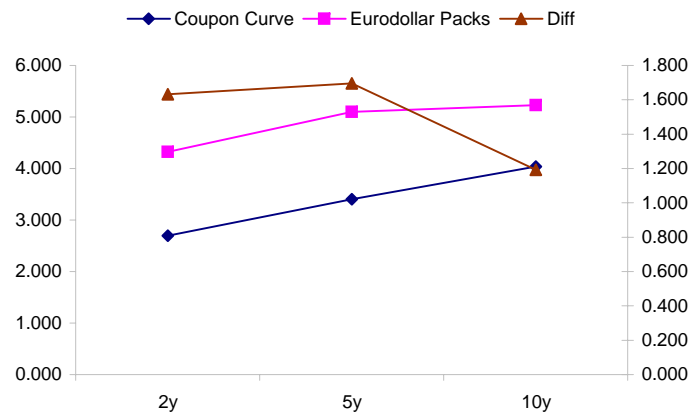
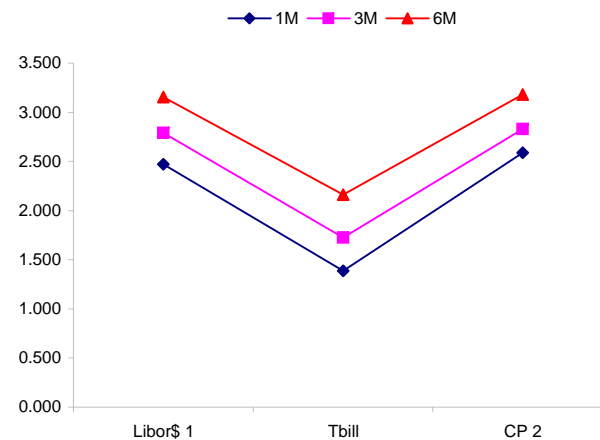
<u>2/5</u>	<u>Rd/Blu Pk</u>	<u>Diff</u>
71.1	77.5	6.4
<u>2/10</u>	<u>Rd/Gld Pk</u>	<u>Diff</u>
134.6	90.7	-43.9
<u>5/10</u>	<u>Blu/Gld Pk</u>	<u>Diff</u>
63.5	13.1	-50.4

Red pack / Blue pack is a 2/5 proxy
 Red pack / Gold pack is a 2/10 proxy
 Blue pack / Gold pack is a 5/10 proxy

"Swap spreads are essentially a measure of the difference between buying a safe government bond and making a riskier loan to a bank"
 --WSJ

Notes:

- 1) Quoted in US Dollars
- 2) CP = Commercial Paper
- 3) ED Pks are colored for pack identifications. Example, the red pack is a 2-yr proxy and is colored red.
- 4) TSY yield minus ED Pk yield
- 5) Swap divided by 100 + TSY yield gives swap rate in basis points.
- 6) Repo Rt quotes is for overnight General Collateral



	Last	Chng	Term	Asset Type
USDLIBON	2.498	0.3000	Overnight	LIBOR
TUSFFRON	1.813	(0.2187)	Overnight	Fed Funds Effective Rate
TUSRPOON	1.930	0.0000	Overnight	Repo Rate
TEONIA01M	4.177	0.0000	1 month	Euribor OIS Rate
TEONIA03M	4.261	(0.0060)	3 month	Euribor OIS Rate
TSONIA01M	5.057	0.0000	1 month	Sterling OIS Rate
TSONIA03M	5.146	0.0090	3 month	Sterling OIS Rate
TUSOIS01M	2.014	(0.0040)	1 month	USD OIS Rate
TUSOIS03M	2.082	0.0120	3 month	USD OIS Rate

