

The Morning Email: Commitment of Traders (CoT) & Dealer Positions (DP)

Table of Contents

- Pg 1** NYMEX: Energy Complex
- Pg 2** CME: Treasury Futures
- Pg 3** CME: Eurodollars
- Pg 4** Dealers: Total Securities Owned - GSE and Govs
- Pg 5** Dealers: Treasury Coupon Positions by Maturity
- Pg 6** Dealers: Total Corporate & Mortgage-backed Securites Owned
- Pg 7** CIT Positions NEW

Want something added? Let me know: jgoulding@ghco.com

Disclaimer: All information within this newsletter is meant for internal use at GH Trader's LLC, only. All information has been recorded to the best of my ability. This material is based upon information that I consider reliable, but I do not represent that it is accurate or complete.

	Current Positions									
	Small Spec			Large Spec			Commercials (Hedgers)			
	Long	Short	Net	Long	Short	Net	Long	Short	Net	
Crude Oil ^	57,908	60,972	(3,064)	199,425	118,876	80,549	1,607,317	1,684,802	(77,485)	Crude Oil
Heating Oil	31,220	26,310	4,910	24,010	13,203	10,807	147,302	163,019	(15,717)	Heating Oil
Unleaded Gas	15,282	14,015	1,267	45,127	9,427	35,700	95,315	132,283	(36,968)	Unleaded Gas
Natural Gas	80,737	40,878	39,859	104,754	248,613	(143,859)	453,294	349,293	104,001	Natural Gas

^ Light Sweet

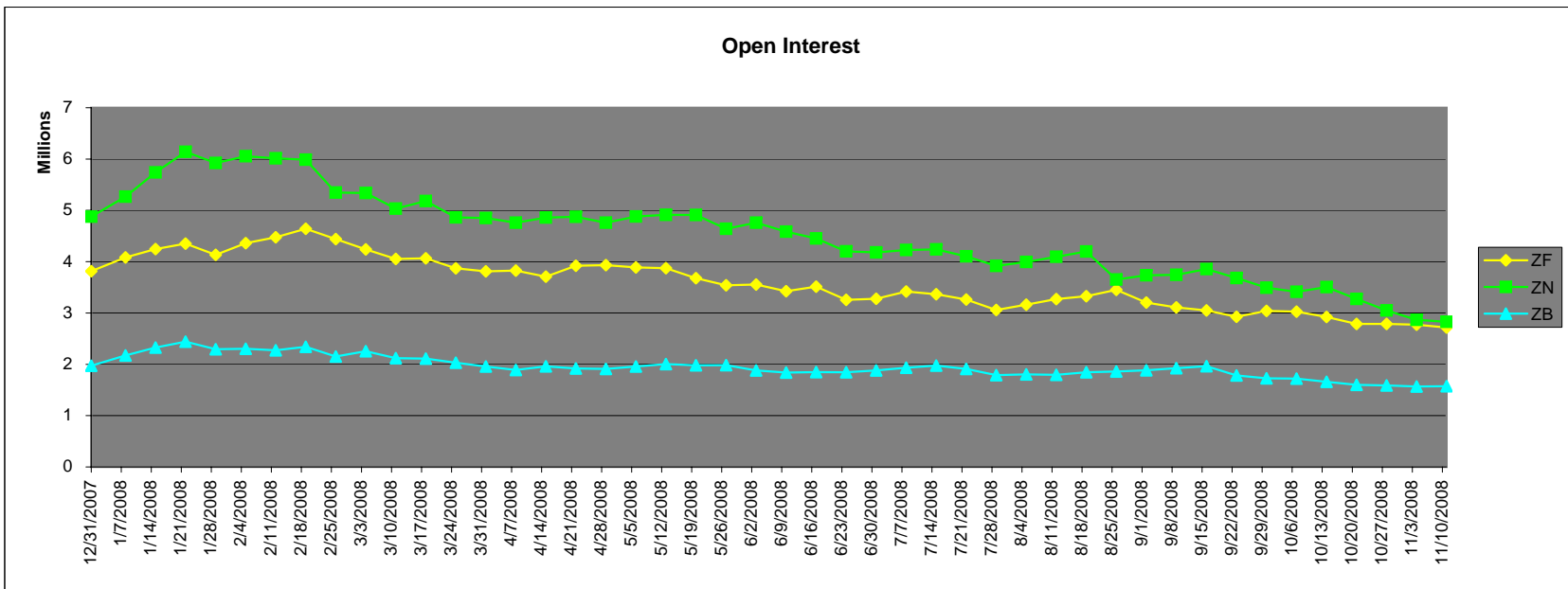
As of	Week over Week Change			
	Sml Spec	Lrg Spec	Comm	
	Net	Net	Net	
11/11/2008	Crude Oil	(9,710)	67,984	(58,274)
	Heating Oil	2,361	(25,364)	23,003
	Unleaded Gas	(40,687)	208,397	(167,710)
	Natural Gas	42,923	(224,408)	181,486

Current Positions

	Small Spec			Large Spec			Commercials (Hedgers)			
	Long	Short	Net	Long	Short	Net	Long	Short	Net	
ZF	180,436	213,193	(32,757)	378,901	156,378	222,523	798,119	987,885	(189,766)	ZF
ZN	244,624	305,156	(60,532)	181,841	146,200	35,641	987,430	962,538	24,892	ZN
ZB	106,815	159,791	(52,976)	48,427	143,130	(94,703)	632,295	484,615	147,680	ZB

Week over Week Change

As of	Sml Spec	Lrg Spec	Comm
11/11/2008	Net	Net	Net
ZF	4,442	3,657	(8,099)
ZN	12,006	(18,902)	6,899
ZB	(16,261)	8,473	7,789

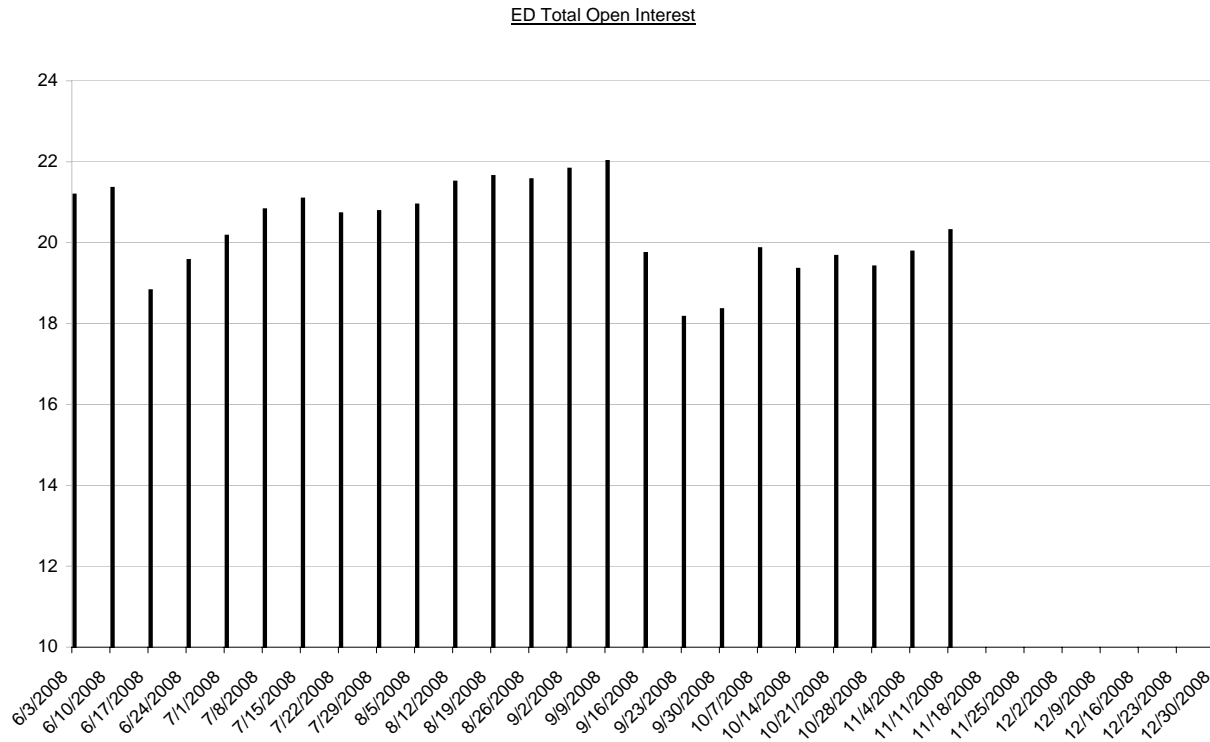


Current Positions								
Small Spec			Large Spec			Commercials		
Long	Short	Net	Long	Short	Net	Long	Short	Net
925,545	769,427	156,118	937,538	369,483	568,055	8,289,940	9,014,112	(724,172)

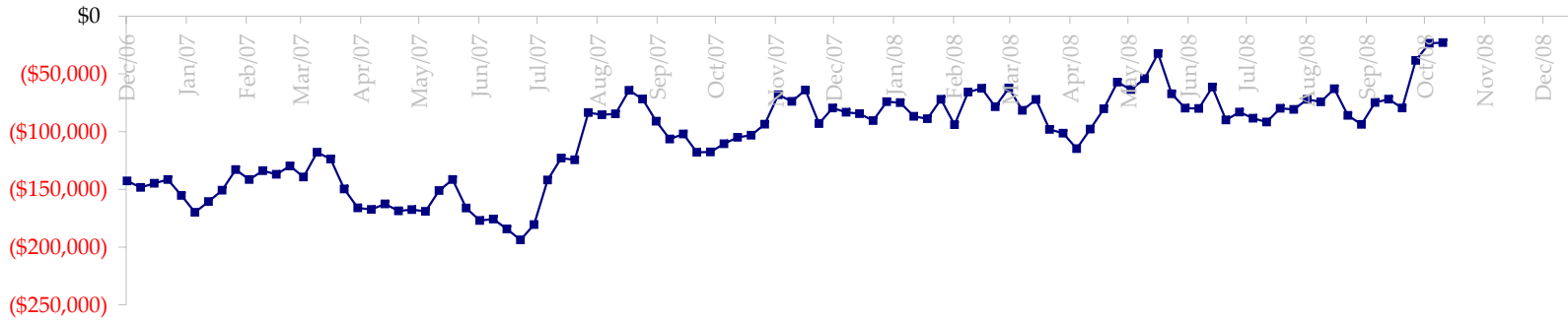
As of
11/11/2008

Week over Week Change		
Sm Spec	Lg Spec	Commrc
(2,484)	172,402	(169,917)

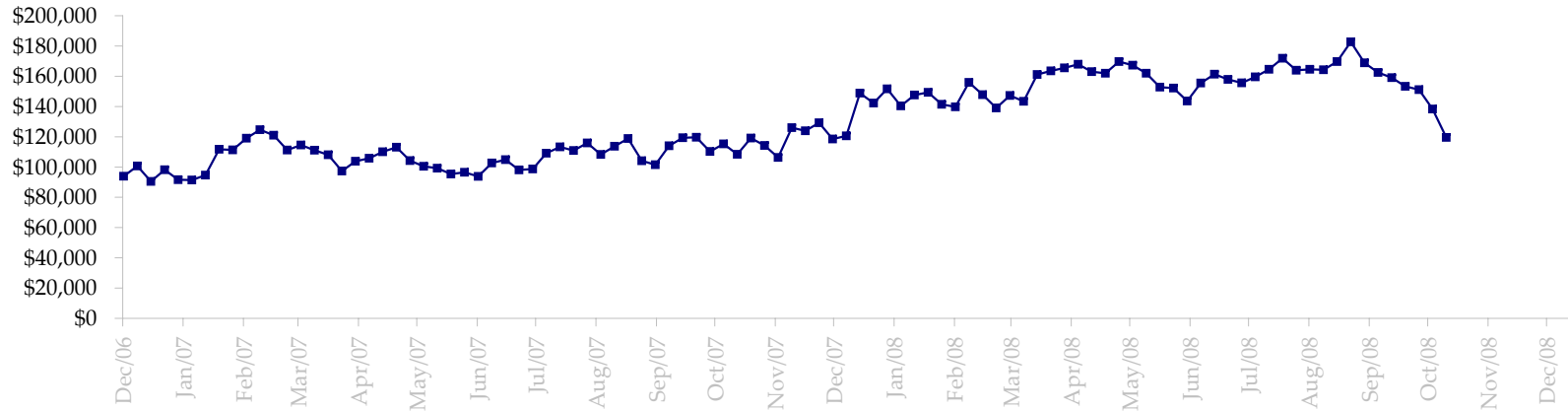
Date	Total O.I.
6/3/2008	21,184,002
6/10/2008	21,349,326
6/17/2008	18,821,063
6/24/2008	19,568,636
7/1/2008	20,166,373
7/8/2008	20,819,989
7/15/2008	21,083,764
7/22/2008	20,720,384
7/29/2008	20,775,687
8/5/2008	20,940,673
8/12/2008	21,505,499
8/19/2008	21,644,124
8/26/2008	21,564,056
9/2/2008	21,823,622
9/9/2008	22,016,222
9/16/2008	19,740,627
9/23/2008	18,162,093
9/30/2008	18,354,501
10/7/2008	19,858,978
10/14/2008	19,350,280
10/21/2008	19,668,213
10/28/2008	19,408,426
11/4/2008	19,775,814
11/11/2008	20,306,045
11/18/2008	0
11/25/2008	0
12/2/2008	0
12/9/2008	0
12/16/2008	0
12/23/2008	0
12/30/2008	0



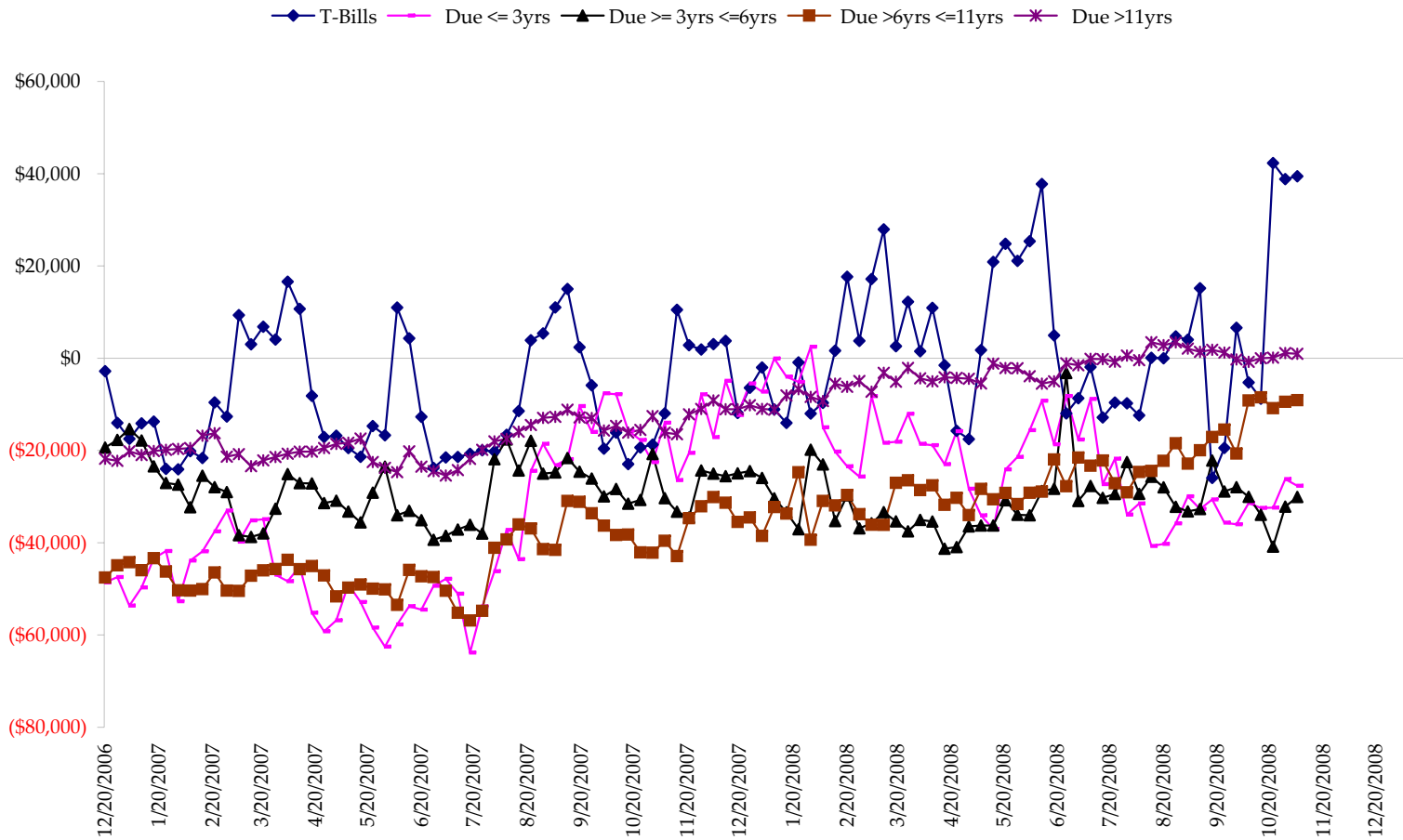
Total US Government Total Securities: Coupons - (\$mln)



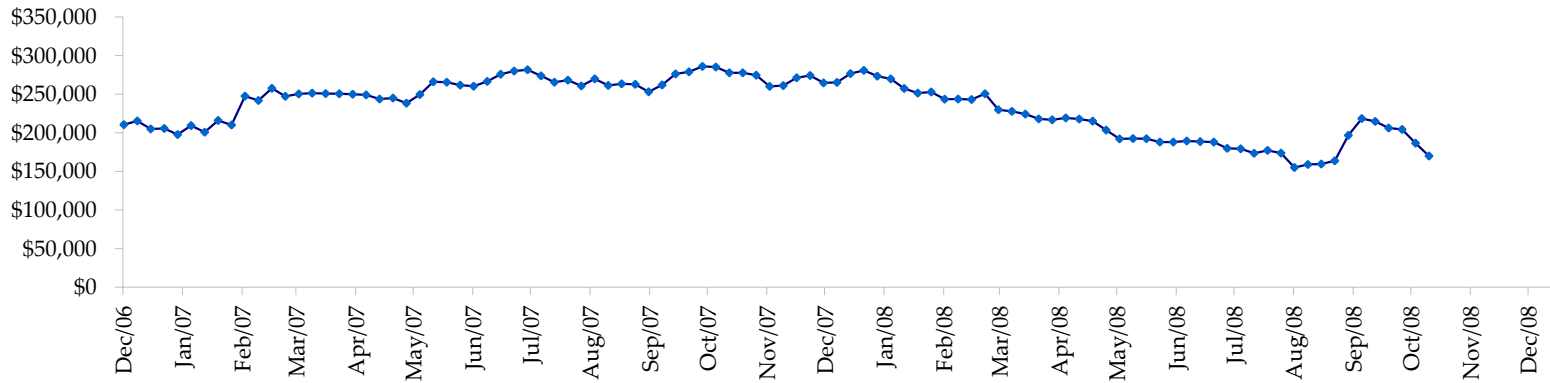
Fed Agency & GSE Total Securities: Coupons - (\$mln)



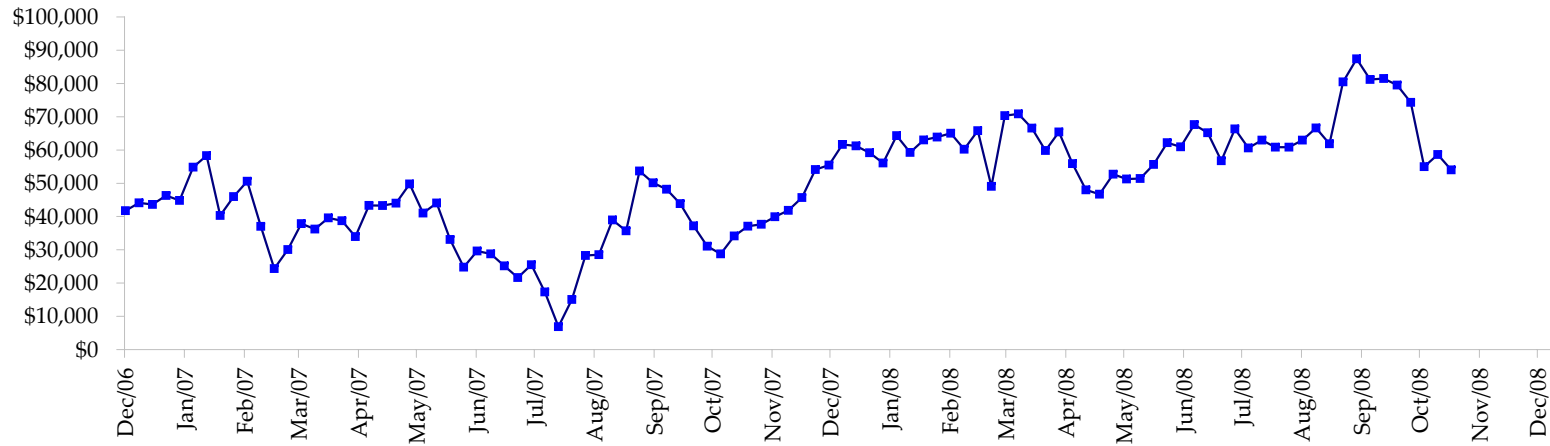
All dates are 'as of'.



Total Corporate Securities - (\$mln)



Total Mortgage Position - (\$mln)



We are interested in the last column, CIT % OI. That stands for Commercial Index Traders, percent Open Interest.

This table, compliments of CommitmentofTraders.com

Supplemental Commitments of Traders Report breaking out the Commercial Index Traders (CIT).														
Analysis of open interest -with option deltas- as of 11/11/2008														
Summary prepared by www.Commitments of Traders .com														
Commodity	Small Spz			Large Sp			Commerc			CIT			Total Open Interest	CIT % OI
	NonRepo			Non Com	- No CIT		Comml	- No CIT		Long	Short	Net		
	Long	Short	Net	Long	Short	Net	Long	Short	Net	Long	Short	Net		
Wheat	30272	52010	-21738	21790	58731	-36941	37032	114438	-77406	161314	25229	136085	440958	30%
K C Wheat	22110	29135	-7025	11896	11456	440	31894	42771	-10877	19527	2066	17461	100201	17%
Corn	154275	217345	-63070	77023	121407	-44384	474438	592991	-118553	304973	78966	226007	1712370	13%
Soybeans	49399	69808	-20409	29548	20518	9030	90785	181623	-90838	113349	11131	102218	425124	24%
Soybean Oil	20016	24880	-4864	10807	23020	-12213	136278	166704	-30426	59718	12215	47503	334827	14%
Cotton	14645	13781	864	19710	23565	-3855	44815	111359	-66544	76174	6638	69536	212420	32%
Lean Hogs	17572	31297	-13725	31555	27760	3795	20321	86678	-66357	79085	2797	76288	194835	39%
Lv Cattle	18644	46536	-27892	33414	38504	-5090	38856	111765	-72909	109681	3790	105891	263965	40%
Feeder	3873	8793	-4920	4347	6722	-2375	3765	2590	1175	6683	563	6120	20530	29%
Cocoa	6101	7216	-1115	27183	21216	5947	58560	68529	-9969	13894	8759	5135	122840	4%
Sugar No 11	67711	66550	1161	74805	55679	19126	249421	514385	-264964	315411	70734	244677	957776	25%
Coffee	23809	21712	2097	10977	28171	-17194	66967	89473	-22506	40772	3169	37603	194994	19%
			-160636			-83714			-830174			1074524	4980840	21%

← Most Current Date

Supplemental Commitments of Traders Report breaking out the Commercial Index Traders (CIT).														
Analysis of open interest -with option deltas- as of 11/04/2008														
Summary prepared by www.Commitments of Traders .com														
Commodity	Small Spz			Large Sp			Commerc			CIT			Total Open Interest	CIT % OI
	NonRepo			Non Com	- No CIT		Comml	- No CIT		Long	Short	Net		
	Long	Short	Net	Long	Short	Net	Long	Short	Net	Long	Short	Net		
Wheat	30531	49971	-19440	27898	56877	-28979	34529	124434	-89905	160570	22247	138323	434511	31%
K C Wheat	16950	24189	-7239	12372	11285	1087	32752	43154	-10402	18526	1973	16553	95890	17%
Corn	164967	229029	-64062	81217	103756	-22539	466017	619650	-153633	312727	72491	240236	1714300	14%
Soybeans	47214	64966	-17752	34044	16362	17682	87233	190403	-103170	113827	10588	103239	412958	24%
Soybean Oil	23243	23949	-706	11403	25058	-13655	129487	169180	-39693	64277	10223	54054	331137	16%
Cotton	13201	11740	1461	20373	23570	-3197	74175	142730	-68555	79667	9375	70292	304540	23%
Lean Hogs	17290	30491	-13201	30146	25526	4620	20633	89920	-69287	82556	4688	77868	197204	39%
Lv Cattle	16113	44659	-28546	35131	41155	-6024	35906	108371	-72465	111563	4528	107035	266244	40%
Feeder	3744	8584	-4840	4496	7300	-2804	4140	2089	2051	6312	718	5594	20739	26%
Cocoa	3904	4471	-567	29091	22699	6392	69838	82587	-12749	25190	18266	6924	163060	4%
Sugar No 11	67949	63776	4173	80362	49562	30800	242083	518292	-276209	312136	70901	241235	950267	25%
Coffee	6783	6424	359	11676	25025	-13349	62207	88061	-25854	42929	4084	38845	196089	19%
			-150360			-29966			-919871			1100198	5086939	21%

← Prior Week's Date

