

**The Morning Email: Commitment of Traders (CoT) & Dealer Positions (DP)**

**Table of Contents**

- Pg 1** NYMEX: Energy Complex
- Pg 2** CME: Treasury Futures
- Pg 3** CME: Eurodollars
- Pg 4** Dealers: Total Securities Owned - GSE and Govs
- Pg 5** Dealers: Treasury Coupon Positions by Maturity
- Pg 6** Dealers: Total Corporate & Mortgage-backed Securites Owned
- Pg 7** CIT Positions **NEW**

Want something added? Let me know: [jgoulding@ghco.com](mailto:jgoulding@ghco.com)

**Disclaimer:** All information within this newsletter is meant for internal use at GH Trader's LLC, only. All information has been recorded to the best of my ability. This material is based upon information that I consider reliable, but I do not represent that it is accurate or complete.

	Current Positions									
	Small Spec			Large Spec			Commercials (Hedgers)			
	Long	Short	Net	Long	Short	Net	Long	Short	Net	
Crude Oil ^	61,017	79,837	(18,820)	171,637	118,481	53,156	1,497,700	1,532,036	(34,336)	Crude Oil
Heating Oil	29,905	28,005	1,900	19,963	14,813	5,150	141,507	148,557	(7,050)	Heating Oil
Unleaded Gas	14,466	11,196	3,270	38,335	17,194	21,141	102,272	126,683	(24,411)	Unleaded Gas
Natural Gas	77,704	39,601	38,103	216,510	370,500	(153,990)	484,097	368,209	115,888	Natural Gas

^ Light Sweet

As of	Week over Week Change			
	Sml Spec	Lrg Spec	Comm	
	Net	Net	Net	
10/14/2008	Crude Oil	(26,599)	46,622	(20,023)
	Heating Oil	(2,180)	(15,867)	18,048
	Unleaded Gas	(33,664)	188,319	(154,655)
	Natural Gas	56,923	(207,146)	150,224

Current Positions

	Small Spec			Large Spec			Commercials (Hedgers)			
	Long	Short	Net	Long	Short	Net	Long	Short	Net	
ZF	196,871	220,276	(23,405)	425,511	155,573	269,938	839,471	1,086,004	(246,533)	ZF
ZN	259,441	328,691	(69,250)	218,897	245,240	(26,343)	1,273,455	1,177,861	95,594	ZN
ZB	128,667	162,250	(33,583)	45,738	171,117	(125,379)	655,591	496,630	158,961	ZB

Week over Week Change

As of	Week over Week Change		
	Sml Spec Net	Lrg Spec Net	Comm Net
10/14/2008	ZF (17,133)	20,833	(3,699)
	ZN 10,265	(91,543)	81,278
	ZB 23,638	(20,744)	(2,896)

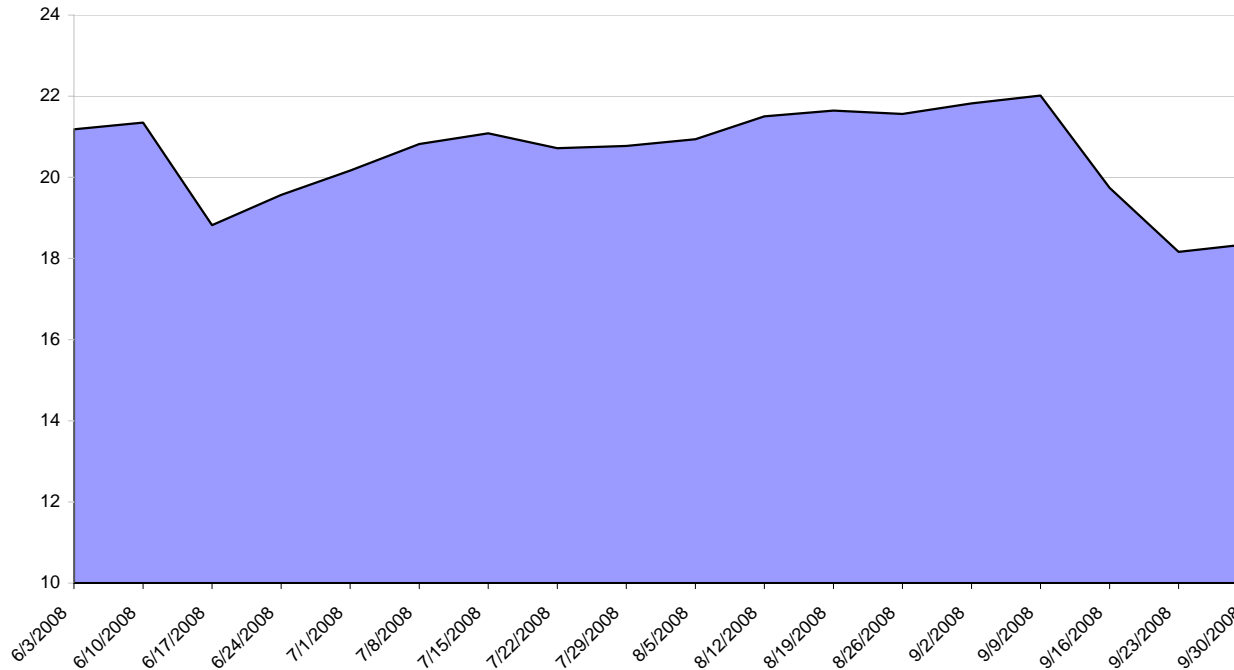
**Current Positions**

Small Spec			Large Spec			Commercials		
Long	Short	Net	Long	Short	Net	Long	Short	Net
990,945	879,562	111,383	855,956	419,958	435,998	7,828,239	8,375,620	(547,381)

**Week over Week Change**

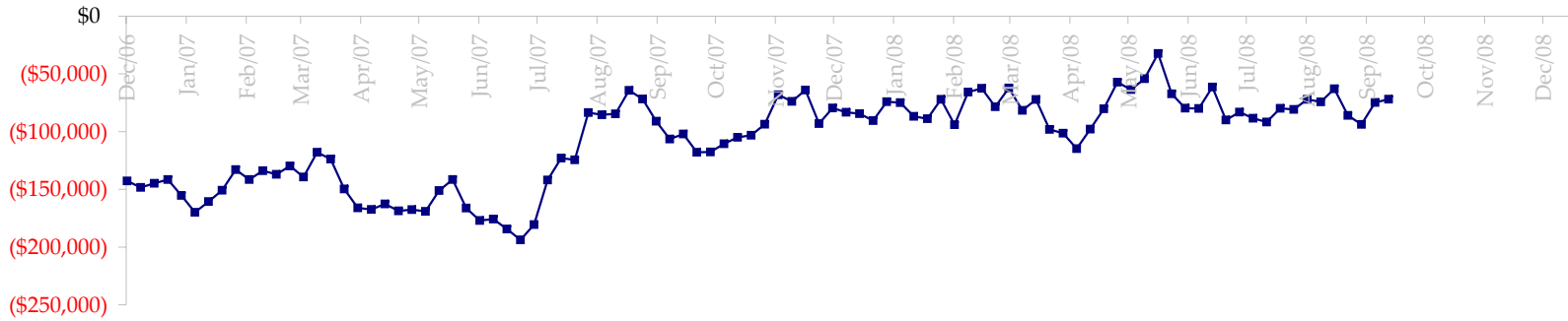
As of	Sm Spec	Lg Spec	Commrc
10/14/2008	59,028	21,609	(80,637)

ED Total Open Interest

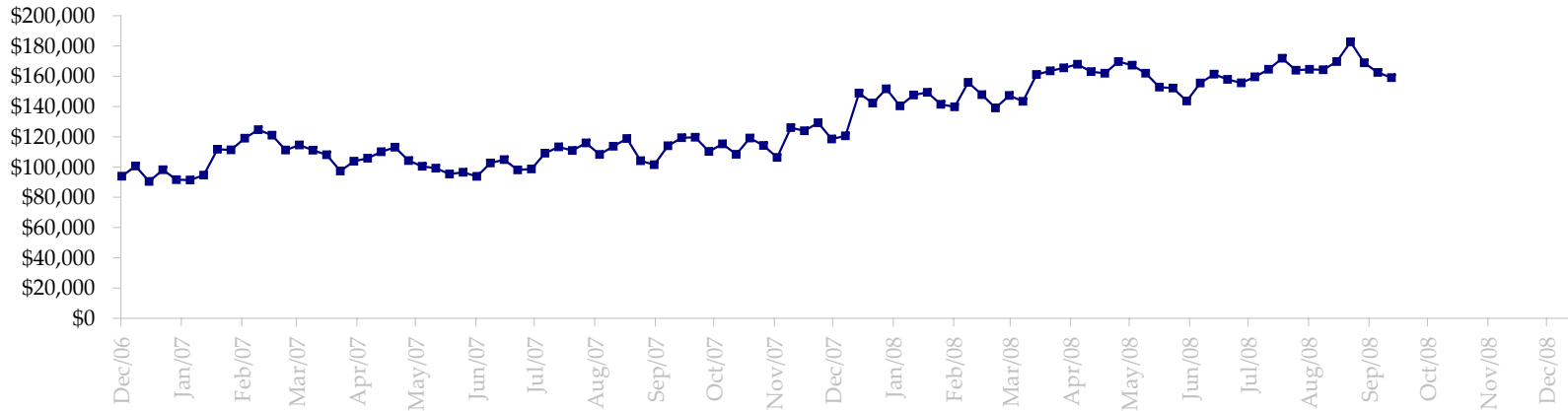


Date	Total O.I.
6/3/2008	21,184,002
6/10/2008	21,349,326
6/17/2008	18,821,063
6/24/2008	19,568,636
7/1/2008	20,166,373
7/8/2008	20,819,989
7/15/2008	21,083,764
7/22/2008	20,720,384
7/29/2008	20,775,687
8/5/2008	20,940,673
8/12/2008	21,505,499
8/19/2008	21,644,124
8/26/2008	21,564,056
9/2/2008	21,823,622
9/9/2008	22,016,222
9/16/2008	19,740,627
9/23/2008	18,162,093
9/30/2008	18,354,501
10/7/2008	19,858,978
10/14/2008	19,350,280
10/21/2008	0
10/28/2008	0
11/4/2008	0
11/11/2008	0
11/18/2008	0

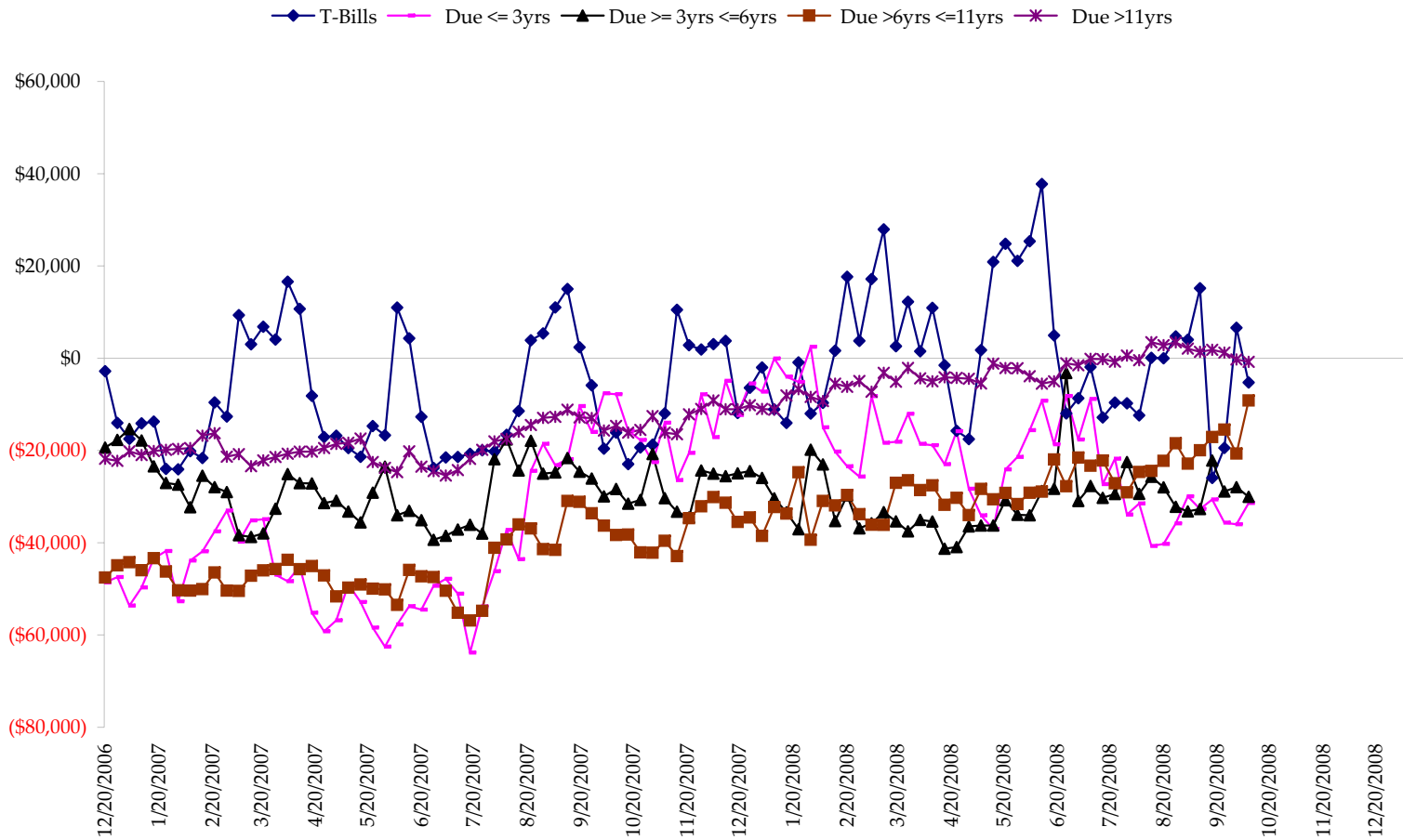
Total US Government Total Securities: Coupons - (\$mln)



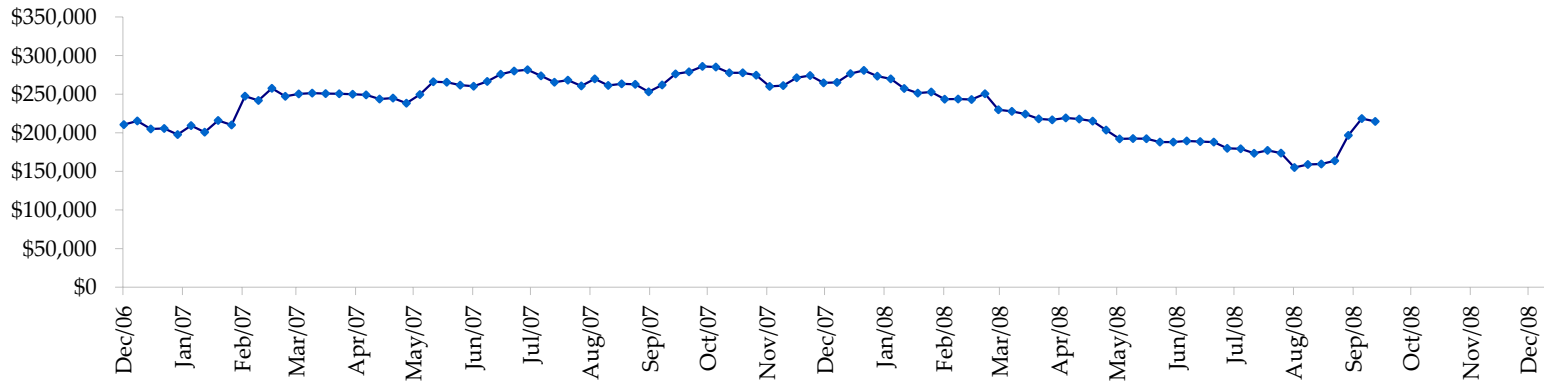
Fed Agency & GSE Total Securities: Coupons - (\$mln)



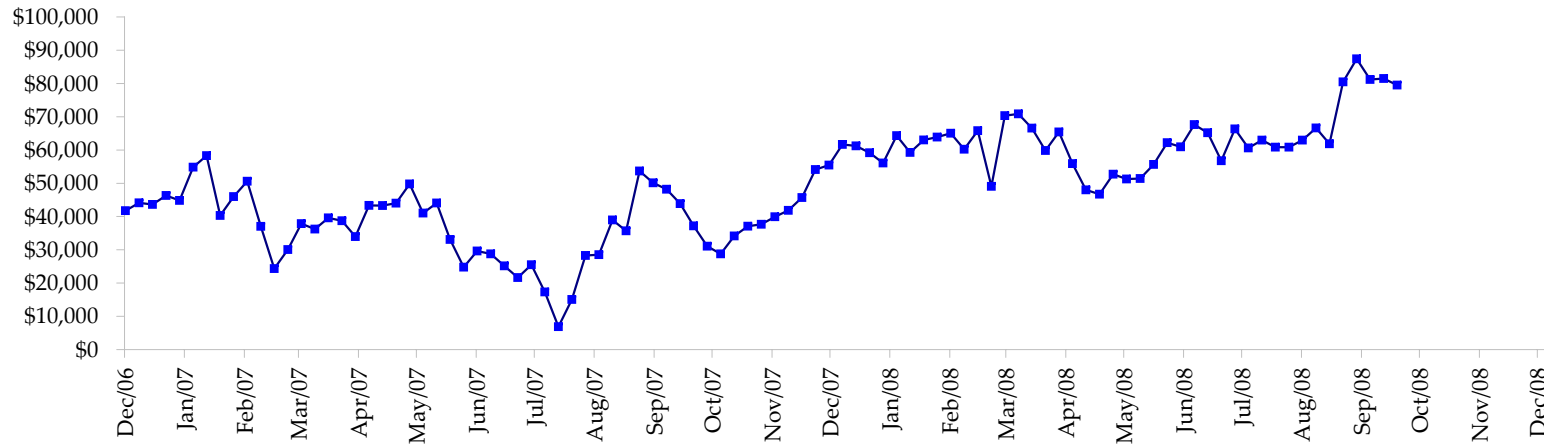
All dates are 'as of'.



Total Corporate Securities - (\$mln)



Total Mortgage Position - (\$mln)



We are interested in the last column, CIT % OI. That stands for Commercial Index Traders, percent Open Interest.

This table, compliments of CommitmentofTraders.com

Supplemental Commitments of Traders Report breaking out the Commercial Index Traders (CIT).														
Analysis of open interest -with option deltas- as of 10/14/2008														
Summary prepared by www. Commitments of Traders .com														
Commodity	Small Spz			Large Sp			Commerc			CIT			Total	CIT
	NonRepo			Non Com			Comml			Long	Short	Net		
	Long	Short	Net	Long	Short	Net	Long	Short	Net	Long	Short	Net	Interest	
Wheat	26929	49495	-22566	25928	65617	-39689	34452	120793	-86341	174659	26063	148596	423223	35%
K C Wheat	16879	26585	-9706	10761	11451	-690	34575	42346	-7771	19429	1263	18166	97231	18%
Corn	149951	240309	-90358	86450	80080	6370	459072	646589	-187517	331810	60305	271505	1725221	15%
Soybeans	48919	82380	-33461	34244	28336	5908	131121	214008	-82887	132815	22375	110440	589260	18%
Soybean Oil	20266	22601	-2335	16585	28367	-11782	132019	180455	-48436	71267	8714	62553	346659	18%
Cotton	13639	12005	1634	20312	26564	-6252	77112	147208	-70096	82833	8119	74714	329306	22%
Lean Hogs	21490	33590	-12100	23275	25579	-2304	23184	97573	-74389	89713	918	88795	205833	43%
Lv Cattle	17883	50240	-32357	33701	44778	-11077	39356	115115	-75759	121582	2390	119192	270072	44%
Feeder	4952	9727	-4775	3515	8711	-5196	6776	2387	4389	6816	1234	5582	26402	21%
Cocoa	3762	3807	-45	24281	20410	3871	63399	80610	-17211	21760	8375	13385	135718	9%
Sugar No 11	67272	70008	-2736	74800	65568	9232	251595	524234	-272639	328789	62645	266144	966314	27%
Coffee	6116	6436	-320	10783	27165	-16382	61495	89349	-27854	48240	3684	44556	196886	22%
			-209125			-67991			-946511			1223628	5312125	23%

← Most Current Date

Supplemental Commitments of Traders Report breaking out the Commercial Index Traders (CIT).														
Analysis of open interest -with option deltas- as of 10/07/2008														
Summary prepared by www. Commitments of Traders .com														
Commodity	Small Spz			Large Sp			Commerc			CIT			Total	CIT
	NonRepo			Non Com			Comml			Long	Short	Net		
	Long	Short	Net	Long	Short	Net	Long	Short	Net	Long	Short	Net	Interest	
Wheat	25526	51257	-25731	27628	68208	-40580	33236	121113	-87877	180279	26091	154188	415737	37%
K C Wheat	17380	26010	-8630	11690	11490	200	32886	42808	-9922	20091	1739	18352	97320	18%
Corn	145986	252983	-106997	100830	84260	16570	454593	649951	-195358	342628	56844	285784	1728906	16%
Soybeans	51637	88935	-37298	41411	25537	15874	116238	210634	-94396	136742	20922	115820	575501	20%
Soybean Oil	23819	25991	-2172	17336	26075	-8739	126614	181518	-54904	74156	8340	65816	335790	19%
Cotton	13459	12608	851	22322	32350	-10028	77701	152090	-74389	91208	7642	83566	343138	24%
Lean Hogs	20364	32412	-12048	19992	29889	-9897	23019	93920	-70901	93913	1066	92847	206152	45%
Lv Cattle	19852	52866	-33014	35168	51398	-16230	41133	116998	-75885	127223	2114	125109	275334	45%
Feeder	5103	9845	-4742	3610	9368	-5758	6389	2080	4309	7548	1356	6192	27605	22%
Cocoa	5627	3582	2045	25144	20909	4235	60593	83373	-22780	22351	5850	16501	134137	12%
Sugar No 11	66299	67053	-754	74510	63097	11413	236495	527397	-290902	343522	63280	280242	957222	29%
Coffee	7392	7624	-232	11331	28348	-17017	63892	93346	-29454	50468	3765	46703	211850	22%
			-228722			-59957			-1002439			1291120	5308692	24%

← Prior Week's Date