

The Morning Email: Commitment of Traders (CoT) & Dealer Positions (DP)

Table of Contents

- Pg 1** NYMEX: Energy Complex
- Pg 2** CME: Treasury Futures
- Pg 3** CME: Eurodollars
- Pg 4** Dealers: Total Securities Owned - GSE and Govs
- Pg 5** Dealers: Treasury Coupon Positions by Maturity
- Pg 6** Dealers: Total Corporate & Mortgage-backed Securites Owned
- Pg 7** CIT Positions **NEW**

Want something added? Let me know: jgoulding@ghco.com

Disclaimer: All information within this newsletter is meant for internal use at GH Trader's LLC, only. All information has been recorded to the best of my ability. This material is based upon information that I consider reliable, but I do not represent that it is accurate or complete.

	Current Positions									
	Small Spec			Large Spec			Commercials (Hedgers)			
	Long	Short	Net	Long	Short	Net	Long	Short	Net	
Crude Oil ^	45,636	63,007	(17,371)	176,595	107,074	69,521	1,490,448	1,542,598	(52,150)	Crude Oil
Heating Oil	33,872	28,892	4,980	21,436	15,054	6,382	138,703	150,065	(11,362)	Heating Oil
Unleaded Gas	14,220	10,784	3,436	40,270	14,246	26,024	100,581	130,041	(29,460)	Unleaded Gas
Natural Gas	78,784	41,223	37,561	198,136	353,462	(155,326)	485,033	367,268	117,765	Natural Gas

^ Light Sweet

As of	Week over Week Change			
	Sml Spec	Lrg Spec	Comm	
	Net	Net	Net	
10/21/2008	Crude Oil	(19,271)	525,779	(45,100)
	Heating Oil	1,710	(14,759)	13,049
	Unleaded Gas	(34,667)	180,014	(145,348)
	Natural Gas	54,932	(224,847)	169,915

Current Positions

	Small Spec			Large Spec			Commercials (Hedgers)			
	Long	Short	Net	Long	Short	Net	Long	Short	Net	
ZF	187,589	204,478	(16,889)	427,310	161,598	265,712	778,158	1,026,981	(248,823)	ZF
ZN	236,586	315,315	(78,729)	211,606	193,314	18,292	1,189,493	1,129,056	60,437	ZN
ZB	131,835	173,621	(41,786)	40,561	141,607	(101,046)	628,315	485,482	142,833	ZB

Week over Week Change

As of		Sml Spec	Lrg Spec	Comm
		Net	Net	Net
10/21/2008	ZF	6,516	(4,226)	(2,290)
	ZN	(9,479)	44,635	(35,157)
	ZB	(8,203)	24,333	(16,128)

Current Positions

Small Spec			Large Spec			Commercials		
Long	Short	Net	Long	Short	Net	Long	Short	Net
1,035,967	901,321	134,646	906,399	375,470	530,929	7,891,741	8,557,315	(665,574)

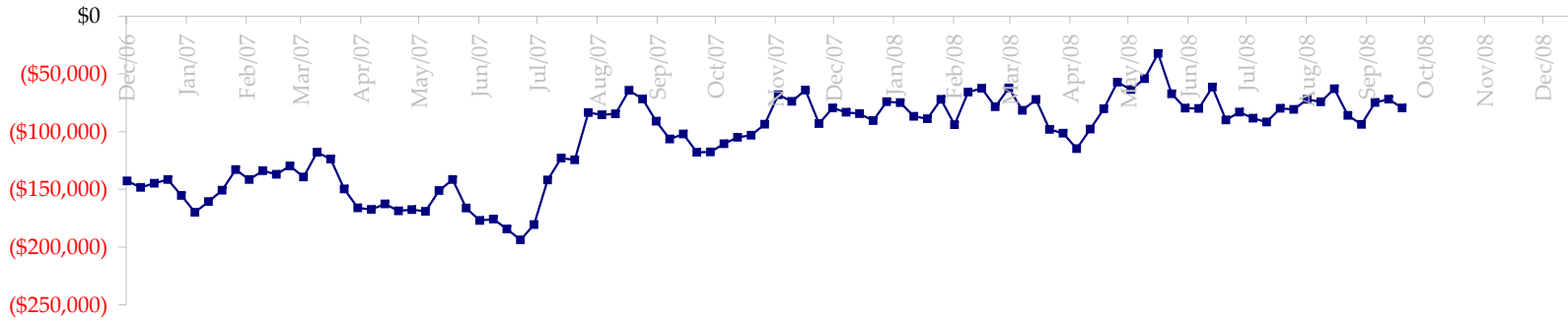
Week over Week Change

As of	Sm Spec	Lg Spec	Commrc
10/21/2008	23,263	94,931	(118,193)

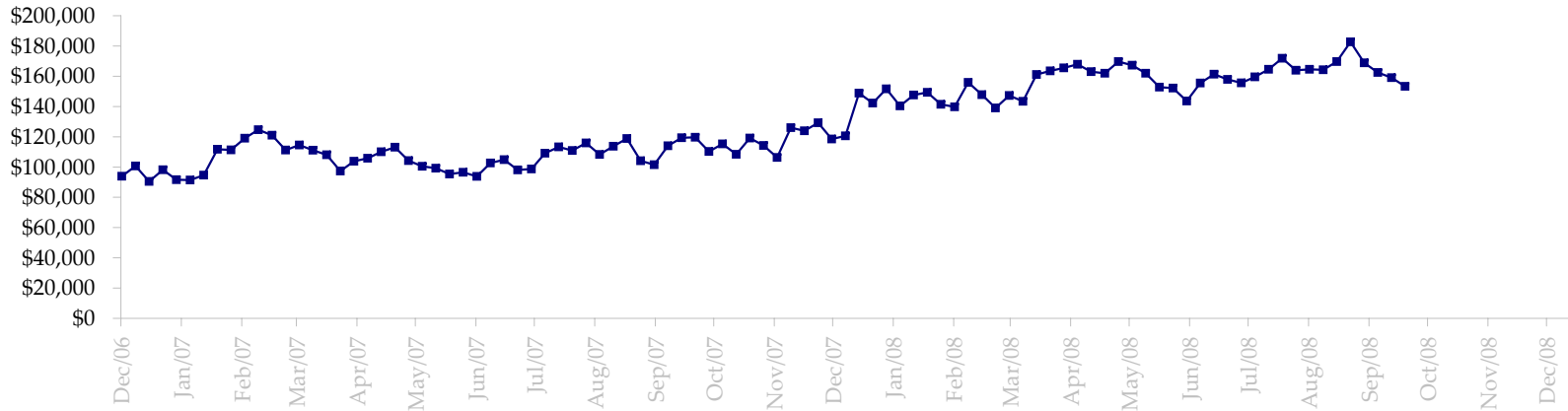
ED Total Open Interest

Date	Total O.I.
6/3/2008	21,184,002
6/10/2008	21,349,326
6/17/2008	18,821,063
6/24/2008	19,568,636
7/1/2008	20,166,373
7/8/2008	20,819,989
7/15/2008	21,083,764
7/22/2008	20,720,384
7/29/2008	20,775,687
8/5/2008	20,940,673
8/12/2008	21,505,499
8/19/2008	21,644,124
8/26/2008	21,564,056
9/2/2008	21,823,622
9/9/2008	22,016,222
9/16/2008	19,740,627
9/23/2008	18,162,093
9/30/2008	18,354,501
10/7/2008	19,858,978
10/14/2008	19,350,280
10/21/2008	19,668,213
10/28/2008	0
11/4/2008	0
11/11/2008	0
11/18/2008	0

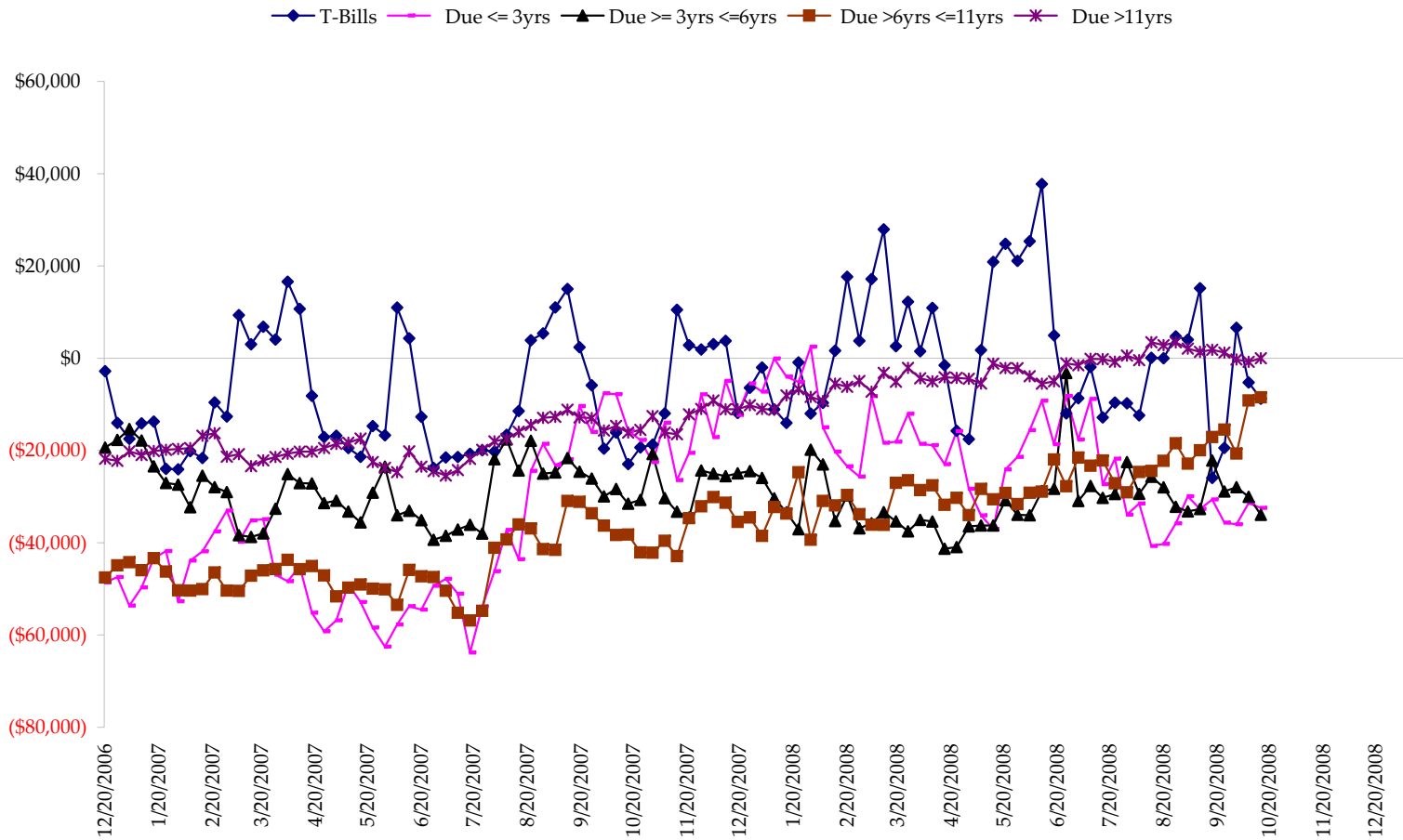
Total US Government Total Securities: Coupons - (\$mln)



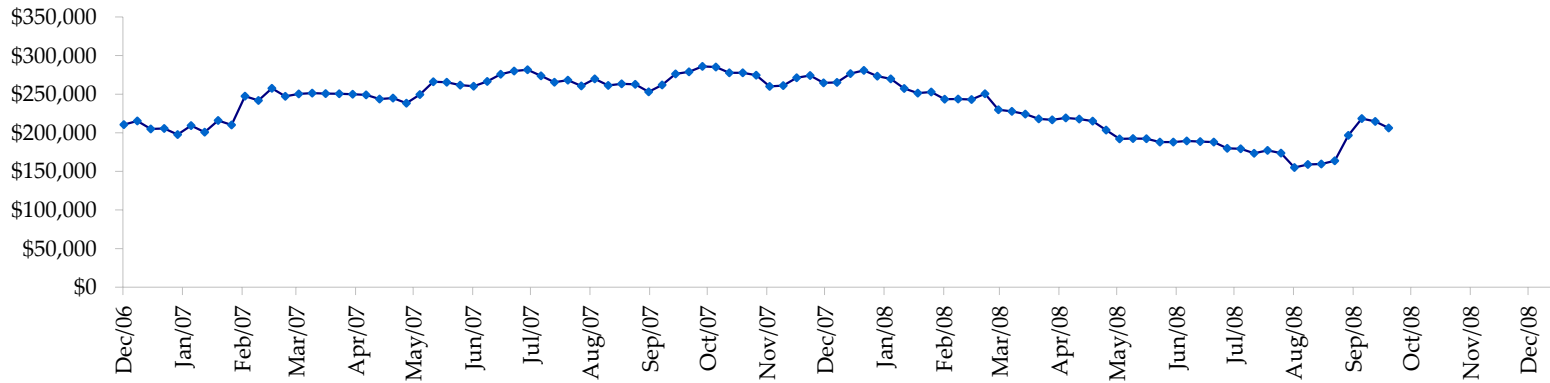
Fed Agency & GSE Total Securities: Coupons - (\$mln)



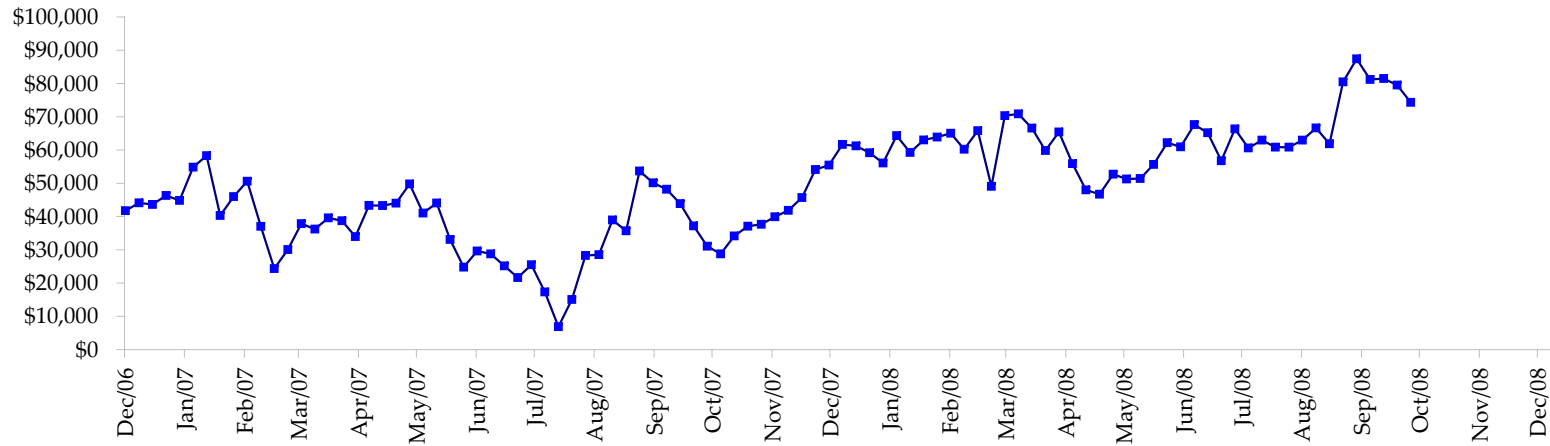
All dates are 'as of'.



Total Corporate Securities - (\$mln)



Total Mortgage Position - (\$mln)



We are interested in the last column, CIT % OI. That stands for Commercial Index Traders, percent Open Interest.

This table, compliments of CommitmentofTraders.com

Supplemental Commitments of Traders Report breaking out the Commercial Index Traders (CIT).														
Analysis of open interest -with option deltas- as of 10/21/2008														
Summary prepared by www.Commitments of Traders .com														
Commodity	Small Spc			Large Sp			Commerc			CIT			Total	CIT
	NonRepo			Non Com	- No CIT		Comm	- No CIT		Long	Short	Net		
	Long	Short	Net	Long	Short	Net	Long	Short	Net	Long	Short	Net	Interest	
Wheat	24971	47779	-22808	24733	65432	-40699	36449	115289	-78840	170004	27657	142347	431474	32%
K C Wheat	16284	23860	-7576	11114	11841	-727	34406	42938	-8532	18879	2044	16835	96105	17%
Corn	147058	228516	-81458	80058	86991	-6933	462857	634091	-171234	323412	63787	259625	1707036	15%
Soybeans	44701	70845	-26144	26866	29097	-2231	142533	221996	-79463	131017	23178	107839	553469	19%
Soybean Oil	22268	23760	-1492	14423	37536	-23113	135456	171834	-36378	69521	8538	60983	341689	17%
Cotton	13283	12566	717	22159	25938	-3779	77662	143121	-65459	76726	8204	68522	314919	21%
Lean Hogs	19714	31608	-11894	27373	23893	3480	18246	92697	-74451	84585	1720	82865	191065	43%
Lv Cattle	17259	47074	-29815	34622	48265	-13643	38332	109939	-71607	117641	2578	115063	266491	43%
Feeder	4778	9286	-4508	3955	8763	-4808	6137	2268	3869	6619	1172	5447	24864	21%
Cocoa	5029	5360	-331	27111	23485	3626	68120	77515	-9395	19836	13736	6100	146950	4%
Sugar No 11	63882	67346	-3464	73229	67494	5735	252265	509744	-257479	318875	63666	255209	947826	26%
Coffee	5234	5975	-741	10301	27550	-17249	62396	87065	-24669	46671	4013	42658	197804	21%
			-189514			-100341			-873638			1163493	5219692	22%
Supplemental Commitments of Traders Report breaking out the Commercial Index Traders (CIT).														
Analysis of open interest -with option deltas- as of 10/14/2008														
Summary prepared by www.Commitments of Traders .com														
Commodity	Small Spc			Large Sp			Commerc			CIT			Total	CIT
	NonRepo			Non Com	- No CIT		Comm	- No CIT		Long	Short	Net		
	Long	Short	Net	Long	Short	Net	Long	Short	Net	Long	Short	Net	Interest	
Wheat	26929	49495	-22566	25928	65617	-39689	34452	120793	-86341	174659	26063	148596	423223	35%
K C Wheat	16879	26585	-9706	10761	11451	-690	34575	42346	-7771	19429	1263	18166	97231	18%
Corn	149951	240309	-90358	86450	80080	6370	459072	646589	-187517	331810	60305	271505	1725221	15%
Soybeans	48919	82380	-33461	34244	28336	5908	131121	214008	-82887	132815	22375	110440	589260	18%
Soybean Oil	20266	22601	-2335	16585	28367	-11782	132019	180455	-48436	71267	8714	62553	346659	18%
Cotton	13639	12005	1634	20312	26564	-6252	77112	147208	-70096	82833	8119	74714	329306	22%
Lean Hogs	21490	33590	-12100	23275	25579	-2304	23184	97573	-74389	89713	918	88795	205833	43%
Lv Cattle	17883	50240	-32357	33701	44778	-11077	39356	115115	-75759	121582	2390	119192	270072	44%
Feeder	4952	9727	-4775	3515	8711	-5196	6776	2387	4389	6816	1234	5582	26402	21%
Cocoa	3762	3807	-45	24281	20410	3871	63399	80610	-17211	21760	8375	13385	135718	9%
Sugar No 11	67272	70008	-2736	74800	65568	9232	251595	524234	-272639	328789	62645	266144	966314	27%
Coffee	6116	6436	-320	10783	27165	-16382	61495	89349	-27854	48240	3684	44556	196886	22%
			-209125			-67991			-946511			1223628	5312125	23%

← Most Current Date

← Prior Week's Date