

**The Morning Email: Commitment of Traders (CoT) & Dealer Positions (DP)**

**Table of Contents**

- Pg 1** NYMEX: Energy Complex
- Pg 2** CME: Treasury Futures
- Pg 3** CME: Eurodollars
- Pg 4** Dealers: Total Securities Owned - GSE and Govs
- Pg 5** Dealers: Treasury Coupon Positions by Maturity
- Pg 6** Dealers: Total Corporate & Mortgage-backed Securitites Owned
- Pg 7** CIT Positions

Want something added? Let me know: [jgoulding@ghco.com](mailto:jgoulding@ghco.com)

**Disclaimer:** All information within this newsletter is meant for internal use at GH Trader's LLC, only. All information has been recorded to the best of my ability. This material is based upon information that I consider reliable, but I do not represent that it is accurate or complete.

	Current Positions									
	Small Spec			Large Spec			Commercials (Hedgers)			
	Long	Short	Net	Long	Short	Net	Long	Short	Net	
Crude Oil ^	82,664	90,348	(7,684)	254,040	122,705	131,335	1,542,171	1,665,821	(123,650)	Crude Oil
Heating Oil	36,286	29,007	7,279	27,374	17,984	9,390	161,123	177,792	(16,669)	Heating Oil
Unleaded Gas	18,200	14,812	3,388	48,603	4,387	44,216	109,600	157,203	(47,603)	Unleaded Gas
Natural Gas	82,099	46,429	35,670	137,479	194,200	(56,721)	371,690	350,639	21,051	Natural Gas

^ Light Sweet

As of	Week over Week Change			
	Sml Spec	Lrg Spec	Comm	
	Net	Net	Net	
2/3/2009	Crude Oil	(17,406)	122,600	(105,193)
	Heating Oil	2,550	(36,988)	34,439
	Unleaded Gas	(35,478)	105,119	(69,640)
	Natural Gas	43,354	(188,056)	144,701

Current Positions										
	Small Spec			Large Spec			Commercials (Hedgers)			
	Long	Short	Net	Long	Short	Net	Long	Short	Net	
ZF	179,986	232,313	(52,327)	76,643	110,552	(33,909)	727,112	640,876	86,236	ZF
ZN	211,858	294,349	(82,491)	104,516	127,281	(22,765)	938,446	833,190	105,256	ZN
ZB	119,730	165,104	(45,374)	35,823	127,429	(91,606)	616,128	479,148	136,980	ZB

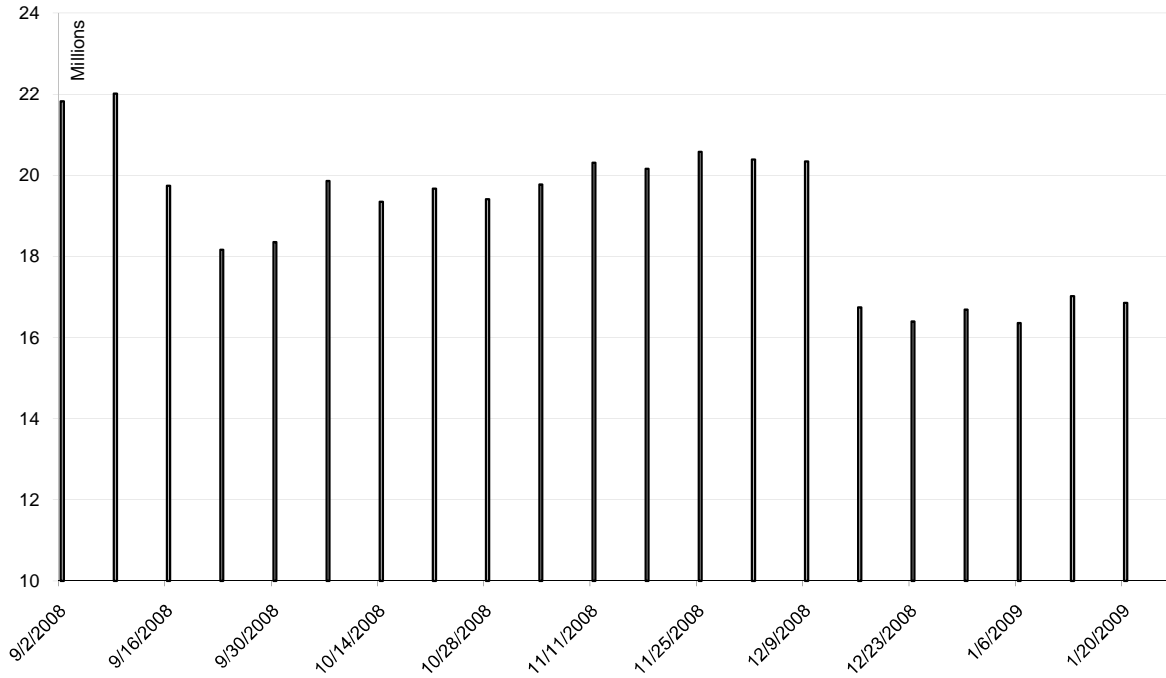
Week over Week Change				
As of		Sml Spec	Lrg Spec	Comm
2/3/2009		Net	Net	Net
	ZF	(49,124)	28,577	20,547
	ZN	(10,713)	(36,890)	47,604
	ZB	(4,146)	(11,173)	15,319

Current Positions								
Small Spec			Large Spec			Commercials		
Long	Short	Net	Long	Short	Net	Long	Short	Net
904,385	747,327	157,058	609,020	364,336	244,684	6,754,546	7,156,288	(401,742)

As of  
2/3/2009

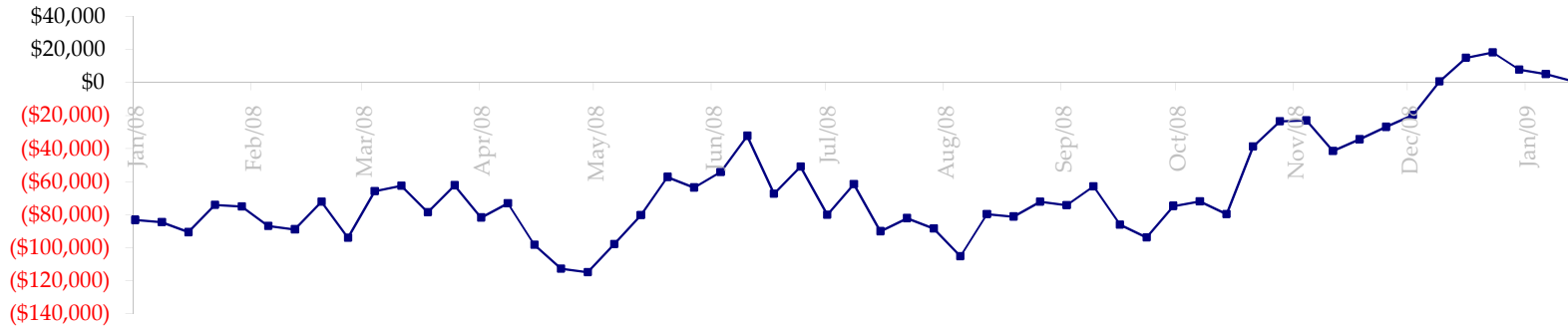
Week over Week Change		
Sm Spec	Lg Spec	Commrc
(37,696)	12,841	24,855

ED Total Open Interest

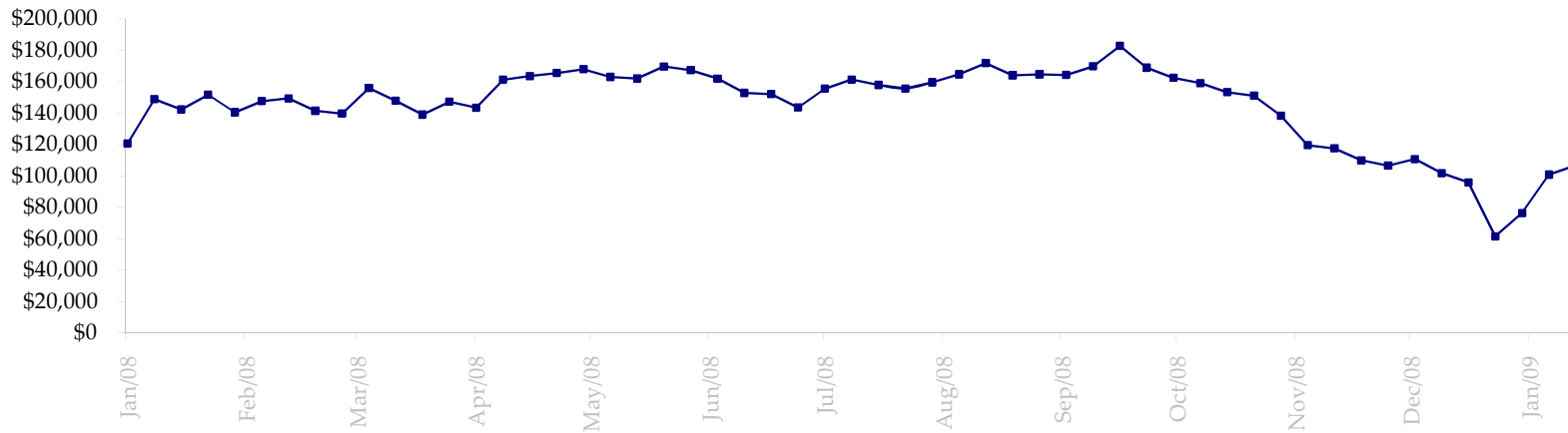


Date	Total O.I.
9/2/2008	21,823,622
9/9/2008	22,016,222
9/16/2008	19,740,627
9/23/2008	18,162,093
9/30/2008	18,354,501
10/7/2008	19,858,978
10/14/2008	19,350,280
10/21/2008	19,668,213
10/28/2008	19,408,426
11/4/2008	19,775,814
11/11/2008	20,306,045
11/18/2008	20,161,877
11/25/2008	20,573,000
12/2/2008	20,389,053
12/9/2008	20,341,452
12/16/2008	16,746,217
12/23/2008	16,398,154
12/30/2008	16,692,040
1/6/2009	16,353,766
1/13/2009	17,017,481
1/20/2009	16,856,304
1/27/2009	16,457,134
2/3/2009	16,535,902
2/10/2009	0
2/17/2009	0
2/24/2009	0
3/3/2009	0
3/10/2009	0
3/17/2009	0
3/24/2009	0
3/31/2009	0
4/7/2009	0
4/14/2009	0
4/21/2009	0

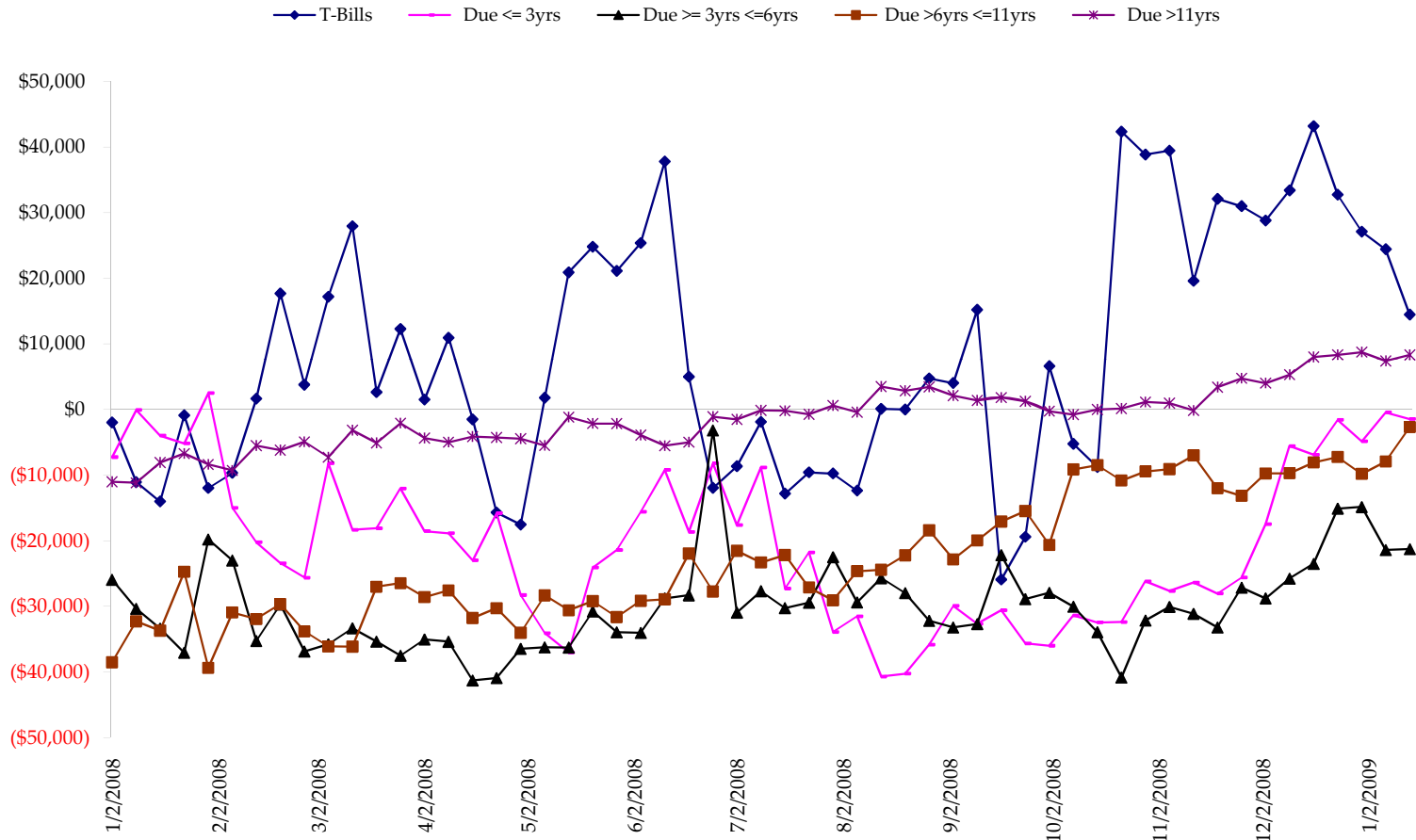
Total US Government Total Securities: Coupons - (\$mln)



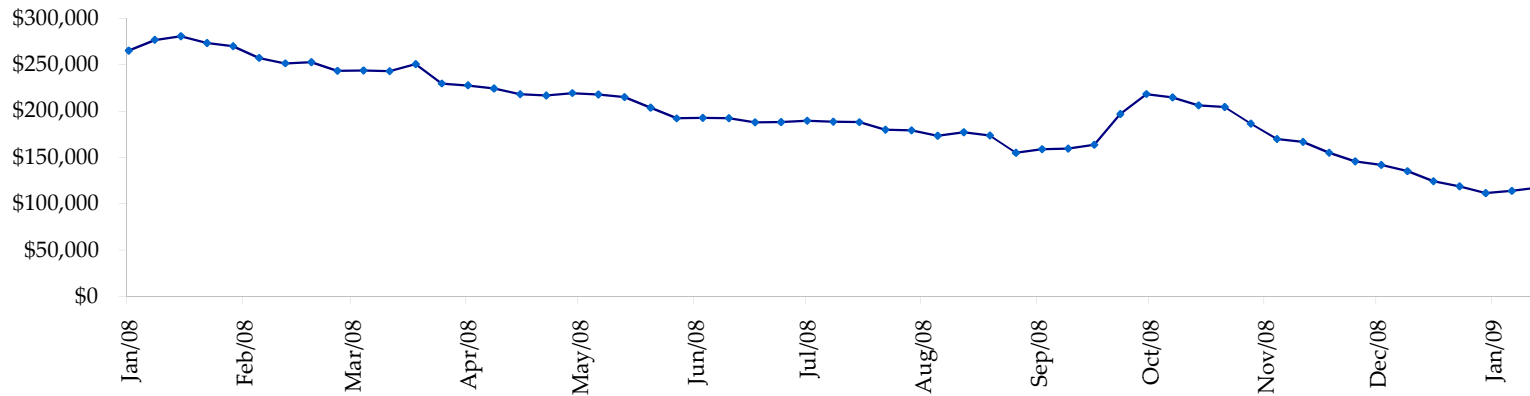
Fed Agency & GSE Total Securities: Coupons - (\$mln)



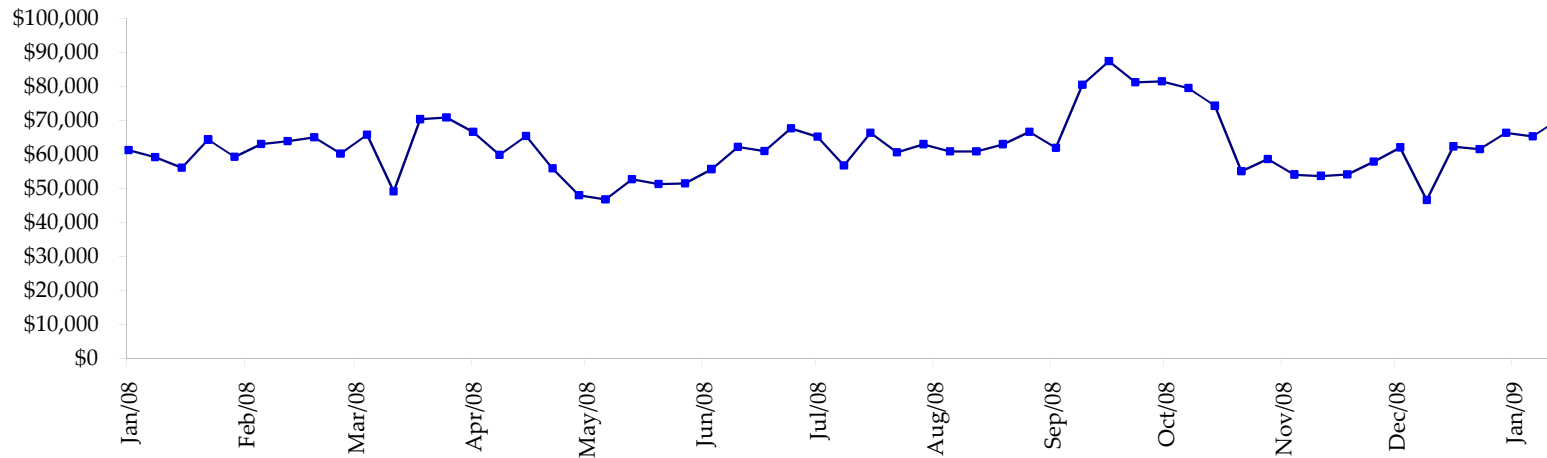
All dates are 'as of'.



Total Corporate Securities - (\$mln)



Total Mortgage Position - (\$mln)



We are interested in the last column, CIT % OI. That stands for Commercial Index Traders, percent Open Interest.

This table, compliments of CommitmentofTraders.com

Supplemental Commitments of Traders Report breaking out the Commercial Index Traders (CIT).														
Analysis of open interest -with option deltas- as of 02/03/2009														
Summary prepared by www.CommitmentofTraders.com														
Commodity	Small Sp			Large Sp			Commerc			CIT			Total	CIT
	NonRepo			Non Com	- No CIT		Comm	- No CIT		Long	Short	Net		
	Long	Short	Net	Long	Short	Net	Long	Short	Net	Long	Short	Net	Interest	
Wheat	29755	51853	-22098	29287	54245	-24958	36576	122623	-86047	157639	24537	133102	370711	35%
K C Wheat	18647	21641	-4994	14432	9212	5220	21690	41324	-19634	20605	1196	19409	84882	22%
Corn	138497	220050	-81553	78769	122675	-43906	329709	431580	-101871	268009	40679	227330	1247816	18%
Soybeans	45868	72642	-26774	46572	26757	19815	89690	181864	-92174	114572	15439	99133	459352	21%
Soybean Oil	22914	26090	-3176	14773	30011	-15238	99271	127519	-28248	52197	5535	46662	259510	17%
Cotton	16030	9741	6289	19146	12744	6402	27417	101804	-74387	70531	8835	61696	196776	31%
Lean Hogs	20469	24923	-4454	22730	27654	-4924	17924	56673	-38749	51857	3730	48127	157299	30%
Lv Cattle	24847	42906	-18059	34860	45159	-10299	47313	103301	-55988	87586	3240	84346	264312	31%
Feeder	5193	9541	-4348	2259	5916	-3657	4799	3392	1407	7351	752	6599	22650	29%
Cocoa	10709	5358	5351	33069	14152	18917	52551	93837	-41286	18907	1887	17020	137510	12%
Sugar No 11	83904	67027	16877	94795	35242	59553	288981	525116	-236135	239328	79624	159704	976556	16%
Coffee	10061	8530	1531	22181	16219	5962	47996	88926	-40930	38325	4889	33436	179113	18%
			-135408			12887			-814042			936564	4356487	21%
Supplemental Commitments of Traders Report breaking out the Commercial Index Traders (CIT).														
Analysis of open interest -with option deltas- as of 01/27/2009														
Summary prepared by www.CommitmentofTraders.com														
Commodity	Small Sp			Large Sp			Commerc			CIT			Total	CIT
	NonRepo			Non Com	- No CIT		Comm	- No CIT		Long	Short	Net		
	Long	Short	Net	Long	Short	Net	Long	Short	Net	Long	Short	Net	Interest	
Wheat	30004	50396	-20392	30854	55506	-24652	31815	125266	-93451	159395	20899	138496	366634	37%
K C Wheat	17254	22813	-5559	14601	8495	6106	21534	42185	-20651	20893	789	20104	85372	23%
Corn	131379	210511	-79132	74994	102347	-27353	322132	445302	-123170	269000	39346	229654	1227531	18%
Soybeans	44349	66643	-22294	47448	22928	24520	94461	193255	-98794	111912	15344	96568	458782	21%
Soybean Oil	23602	21064	2538	12135	26424	-14289	97434	130212	-32778	51186	6656	44530	249622	17%
Cotton	16176	11818	4358	19411	10918	8493	30355	105091	-74736	71074	9188	61888	205769	30%
Lean Hogs	19614	26519	-6905	28969	29226	-257	17104	58718	-41614	51692	2915	48777	158987	30%
Lv Cattle	23410	44394	-20984	33567	44120	-10553	47144	100554	-53410	88037	3091	84946	261927	32%
Feeder	4976	9519	-4543	2621	6005	-3384	5198	3491	1707	6808	589	6219	23277	26%
Cocoa	9467	5833	3634	28641	11865	16776	53002	90441	-37439	19192	2163	17029	133063	12%
Sugar No 11	82549	63092	19457	93792	35785	58007	288188	529908	-241720	247351	83094	164257	981814	16%
Coffee	10289	8338	1951	23007	17499	5508	46719	88214	-41495	38226	4190	34036	176674	19%
			-127871			38922			-857551			946502	4329452	21%

Most Current Date

Prior Week's Date