

The Morning Email: Commitment of Traders (CoT) & Dealer Positions (DP)

Table of Contents

- Pg 1** NYMEX: Energy Complex
- Pg 2** CME: Treasury Futures
- Pg 3** CME: Eurodollars
- Pg 4** Dealers: Total Securities Owned - GSE and Govs
- Pg 5** Dealers: Treasury Coupon Positions by Maturity
- Pg 6** Dealers: Total Corporate & Mortgage-backed Securites Owned
- Pg 7** CIT Positions

Want something added? Let me know: jgoulding@ghco.com

Disclaimer: All information within this newsletter is meant for internal use at GH Trader's LLC, only. All information has been recorded to the best of my ability. This material is based upon information that I consider reliable, but I do not represent that it is accurate or complete.

	Current Positions									
	Small Spec			Large Spec			Commercials (Hedgers)			
	Long	Short	Net	Long	Short	Net	Long	Short	Net	
Crude Oil ^	78,324	80,010	(1,686)	257,847	136,887	120,960	1,531,400	1,650,675	(119,275)	Crude Oil
Heating Oil	37,054	32,249	4,805	29,056	17,801	11,255	168,849	184,909	(16,060)	Heating Oil
Unleaded Gas	19,930	16,433	3,497	50,612	4,013	46,599	115,777	165,873	(50,096)	Unleaded Gas
Natural Gas	83,201	43,712	39,489	143,297	186,225	(42,928)	363,764	360,325	3,439	Natural Gas
^ Light Sweet										
	Week over Week Change									
As of				Sml Spec	Lrg Spec	Comm				
2/10/2009				Net	Net	Net				
				Crude Oil	(8,965)	111,570	(102,606)			
				Heating Oil	1,417	(32,961)	31,543			
				Unleaded Gas	(32,173)	103,320	(71,147)			
				Natural Gas	41,175	(163,888)	122,714			

Current Positions										
	Small Spec			Large Spec			Commercials (Hedgers)			
	Long	Short	Net	Long	Short	Net	Long	Short	Net	
ZF	170,180	181,897	(11,717)	75,541	111,046	(35,505)	759,440	712,217	47,223	ZF
ZN	236,492	273,387	(36,895)	113,273	151,035	(37,762)	916,055	841,398	74,657	ZN
ZB	122,425	172,369	(49,944)	34,045	121,601	(87,556)	618,286	480,786	137,500	ZB

Week over Week Change					
As of		Sml Spec	Lrg Spec	Comm	
2/10/2009		Net	Net	Net	
ZF		40,610	(1,596)	(39,013)	
ZN		45,596	(14,997)	(30,599)	
ZB		(4,570)	4,050	520	

Current Positions								
Small Spec			Large Spec			Commercials		
Long	Short	Net	Long	Short	Net	Long	Short	Net
919,276	752,911	166,365	543,757	387,356	156,401	6,982,467	7,305,233	(322,766)

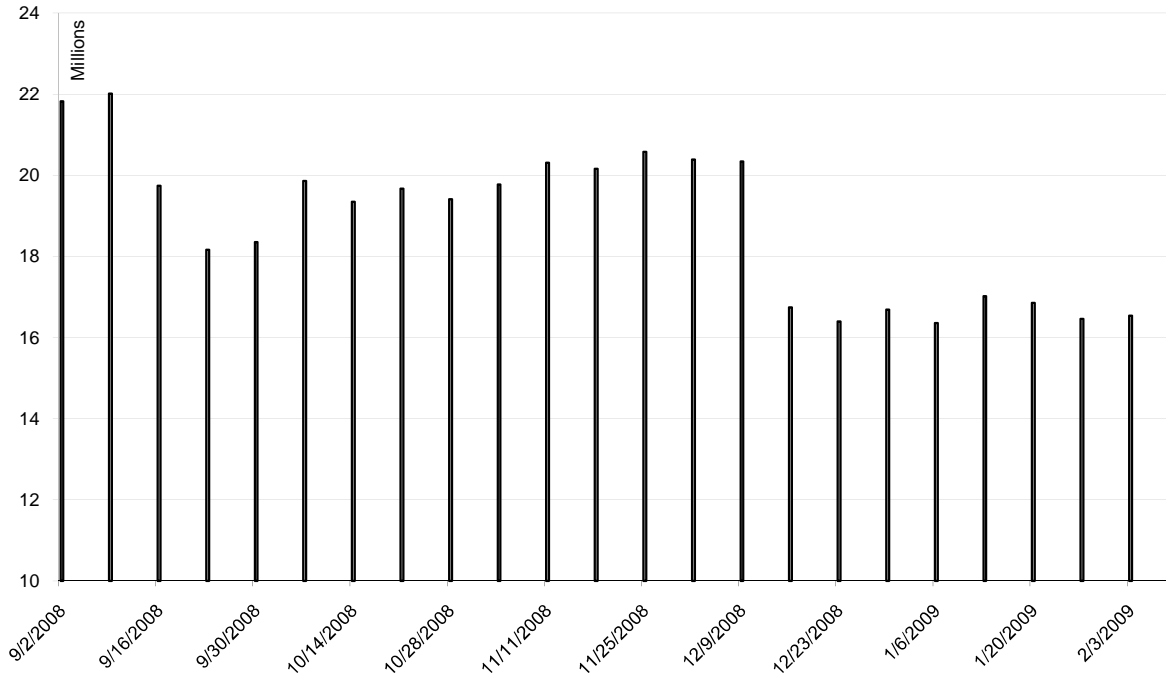
As of

2/10/2009

Week over Week Change

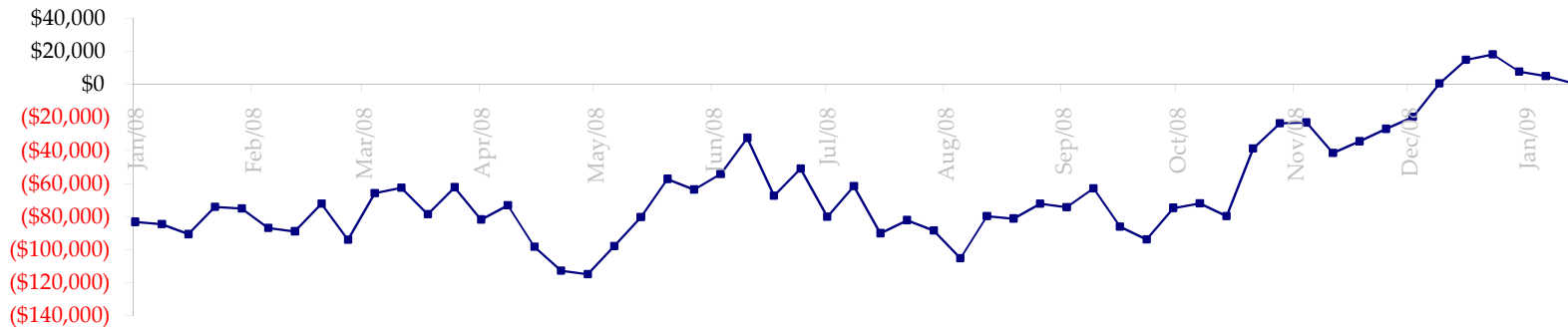
Sm Spec	Lg Spec	Commrc
9,307	(88,283)	78,976

ED Total Open Interest

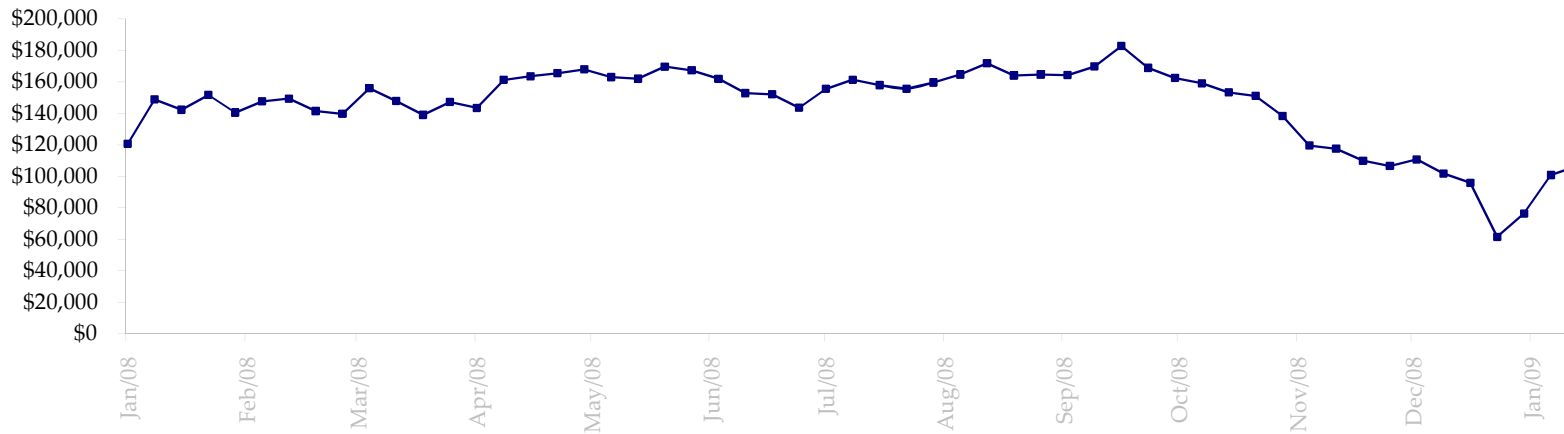


Date	Total O.I.
9/2/2008	21823622
9/9/2008	22016222
9/16/2008	19740627
9/23/2008	18162093
9/30/2008	18354501
10/7/2008	19858978
10/14/2008	19350280
10/21/2008	19668213
10/28/2008	19408426
11/4/2008	19775814
11/11/2008	20306045
11/18/2008	20161877
11/25/2008	20573000
12/2/2008	20389053
12/9/2008	20341452
12/16/2008	16746217
12/23/2008	16398154
12/30/2008	16692040
1/6/2009	16353766
1/13/2009	17017481
1/20/2009	16856304
1/27/2009	16457134
2/3/2009	16535902
2/10/2009	16891000
2/17/2009	0
2/24/2009	0
3/3/2009	0
3/10/2009	0
3/17/2009	0
3/24/2009	0
3/31/2009	0
4/7/2009	0
4/14/2009	0
4/21/2009	0

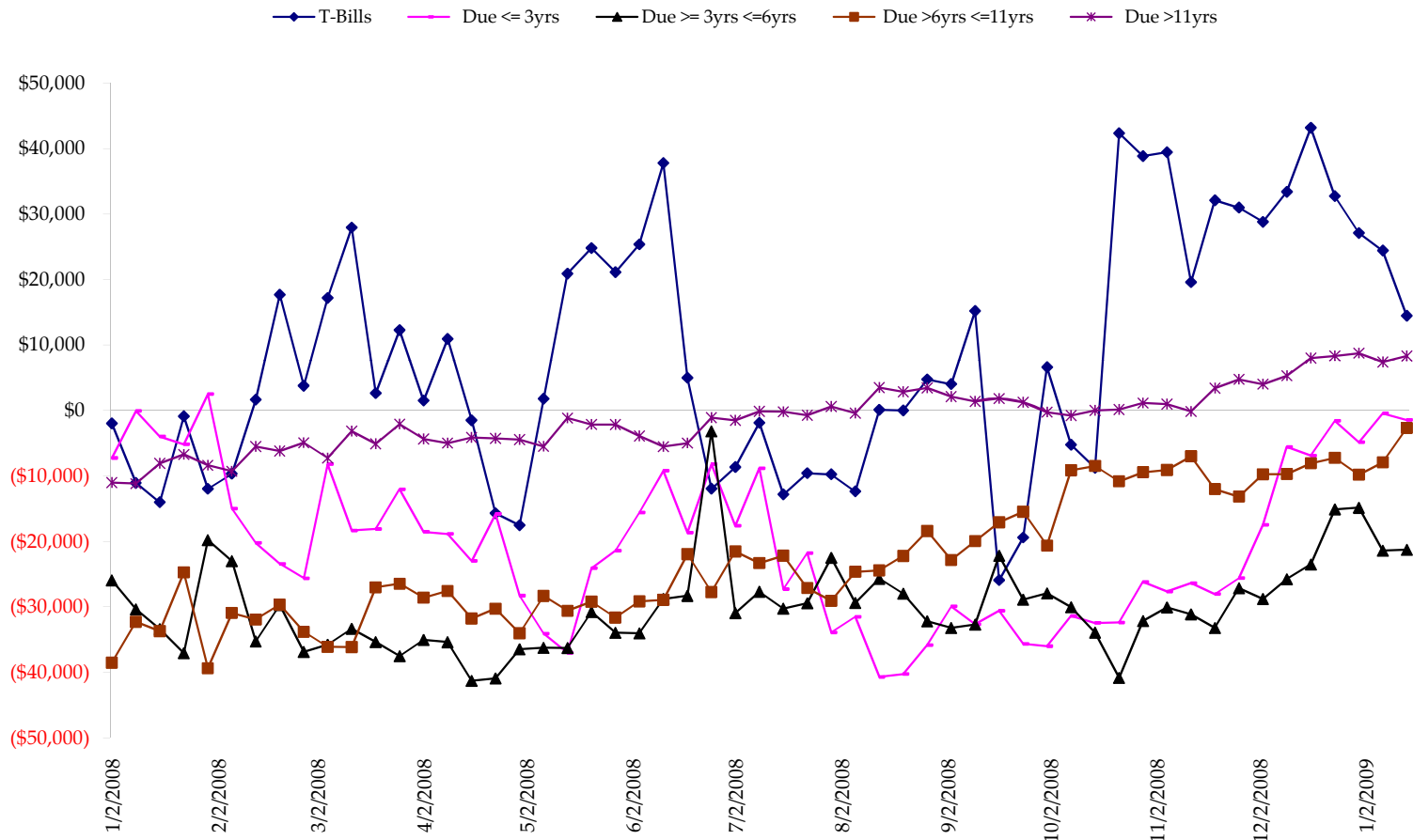
Total US Government Total Securities: Coupons - (\$mln)



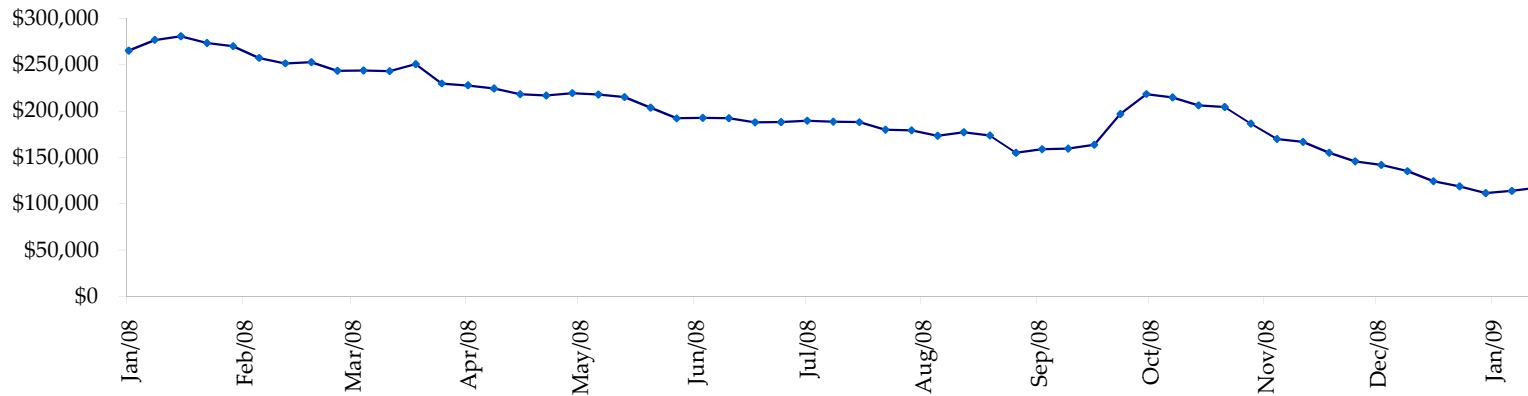
Fed Agency & GSE Total Securities: Coupons - (\$mln)



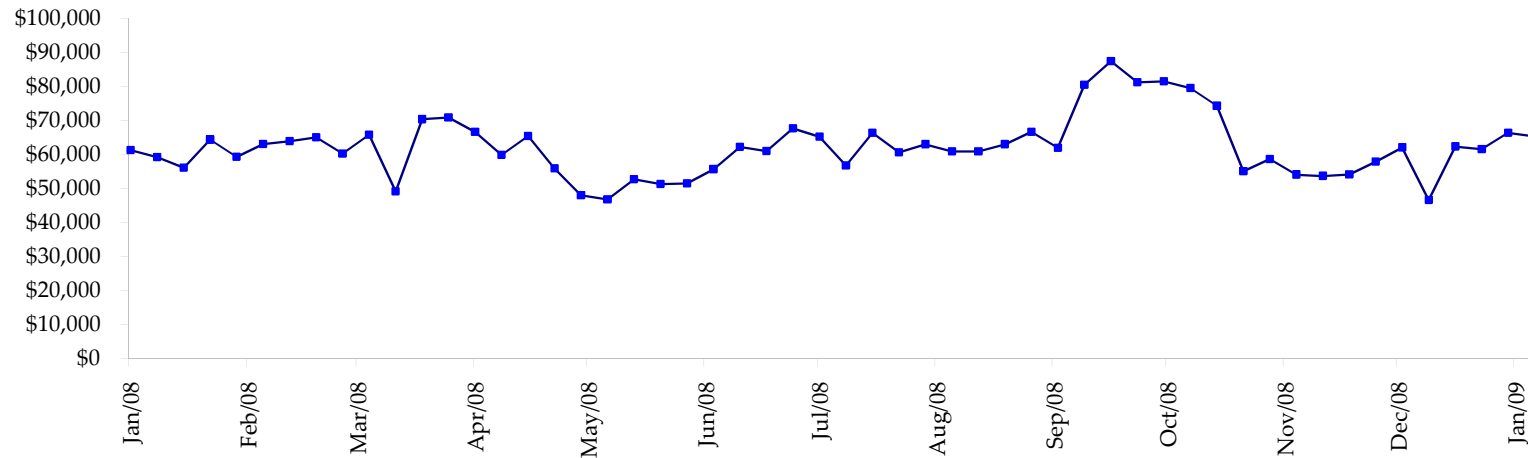
All dates are 'as of'.



Total Corporate Securities - (\$mln)



Total Mortgage Position - (\$mln)



We are interested in the last column, CIT % OI. That stands for Commercial Index Traders, percent Open Interest.

This table, compliments of CommitmentofTraders.com

Supplemental Commitments of Traders Report breaking out the Commercial Index Traders (CIT).
Analysis of open interest -with option deltas- as of 02/10/2009
Summary prepared by www.Commitments of Traders .com

Commodity	Small Sp			Large Sp			Commerc - No CIT			CIT			Total	CIT
	NonRepo			Non Com	- No CIT		Comml	- No CIT		Long	Short	Net	Open	% OI
	Long	Short	Net	Long	Short	Net	Long	Short	Net				Interest	
Wheat	31549	51819	-20270	31222	61472	-30250	33642	118656	-85014	160069	24536	135533	394648	34%
K C Wheat	17791	23301	-5510	14755	10780	3975	22030	40935	-18905	22106	1667	20439	88882	22%
Corn	135110	211466	-76356	79675	121700	-42025	327430	436692	-109262	266738	39095	227643	1228466	18%
Soybeans	48953	72061	-23108	49560	22042	27518	87638	190346	-102708	115108	16811	98297	461414	21%
Soybean Oil	28429	26737	1692	18930	26311	-7381	90757	126459	-35702	47443	6052	41391	250936	16%
Cotton	15937	13301	2636	17828	15168	2660	22918	89757	-66839	66032	4489	61543	162477	37%
Lean Hogs	20615	23742	-3127	18603	28970	-10367	17278	50319	-33041	51187	4651	46536	155312	29%
Lv Cattle	22918	42251	-19333	32643	36530	-3887	41932	102644	-60712	85815	1882	83933	240292	34%
Feeder	6017	11400	-5383	2507	3782	-1275	4892	4055	837	6597	775	5822	23984	24%
Cocoa	11550	6254	5296	36102	14383	21719	50134	93796	-43662	16873	226	16647	131561	12%
Sugar No 11	94685	69857	24828	105397	27282	78115	274475	536767	-262292	231881	72533	159348	965069	16%
Coffee	10823	9659	1164	20595	14622	5973	47957	88245	-40288	38560	5410	33150	177922	18%
			-117471			44775			-857588			930282	4280963	21%

← Most Current Date

Supplemental Commitments of Traders Report breaking out the Commercial Index Traders (CIT).
Analysis of open interest -with option deltas- as of 02/03/2009
Summary prepared by www.Commitments of Traders .com

Commodity	Small Sp			Large Sp			Commerc - No CIT			CIT			Total	CIT
	NonRepo			Non Com	- No CIT		Comml	- No CIT		Long	Short	Net	Open	% OI
	Long	Short	Net	Long	Short	Net	Long	Short	Net				Interest	
Wheat	29755	51853	-22098	29287	54245	-24958	36576	122623	-86047	157639	24537	133102	370711	35%
K C Wheat	16647	21641	-4994	14432	9212	5220	21690	41324	-19634	20605	1196	19409	84882	22%
Corn	138497	220050	-81553	78769	122675	-43906	329709	431580	-101871	268009	40679	227330	1247816	18%
Soybeans	45868	72642	-26774	46572	26757	19815	89690	181864	-92174	114572	15439	99133	459352	21%
Soybean Oil	22914	26090	-3176	14773	30011	-15238	99271	127519	-28248	52197	5535	46662	259510	17%
Cotton	16030	9741	6289	19146	12744	6402	27417	101804	-74387	70531	8835	61696	196776	31%
Lean Hogs	20469	24923	-4454	22730	27654	-4924	17924	56673	-36749	51857	3730	48127	157299	30%
Lv Cattle	24847	42906	-18059	34860	45159	-10299	47313	103301	-55988	87586	3240	84346	264312	31%
Feeder	5193	9541	-4348	2259	5916	-3657	4799	3392	1407	7351	752	6599	22650	29%
Cocoa	10709	5358	5351	33069	14152	18917	52551	93837	-41266	18907	1887	17020	137510	12%
Sugar No 11	83904	67027	16877	94795	35242	59553	288981	525116	-236135	239328	79624	159704	976556	16%
Coffee	10061	8530	1531	22181	16219	5962	47996	88926	-40930	38325	4889	33436	179113	18%
			-135408			12887			-814042			936564	4356487	21%

← Prior Week's Date