



7/2/2009 5:43

## The Morning Email: Treasuries

### Table of Contents

- Pg 1** Auctions
  
- Pg 2** Quotes
  
- Pg 3** Duration, DV01s, CFs
  
- Pg 4** Hedge Ratio's
  
- Pg 5** Treasury Closes: 2pm CT vs this Morning
  
- Pg 6** Cash Duration Matrix
  
- Pg 7** Tic for Tic & Box for Box Matrix
  
- Pg 8** Key Money Rate, Spreads, Swaps, Packs
  
- Pg 9** Libor, Fed Funds (OIS), Repo, SONIA & EONIA Rates

Want something added? Let me know:  
[jgoulding@ghco.com](mailto:jgoulding@ghco.com)

**Disclaimer:** All information within this newsletter is meant for internal use at GH Trader's LLC, only. All information has been recorded to the best of my ability. This material is based upon information that I consider reliable, but I do not represent that it is accurate or complete.

	32nds					
	2 y	3 y	5y	7y	10y	30y
Auction Price	99.304	99.241	99.208	99.163	99.143	99.116
Auction Yield Stop	0.940	1.375	2.310	3.300	3.990	4.288
Actual Auction Date	6/23/2009	6/9/2009	6/24/2009	6/26/2009	06/11/09 r	6/11/2009 r

## Quotes

		32 nds					
	Last	Net	High	Low	Open	Volume	Sym Name
TUAU9	108.0750	0.2	108.0800	108.0670	108.0770	12,425	2y Fut
Z3NU9	111.1670	(1.5)	111.1670	111.1670	111.1670	1	3y Fut
FVAU9	114.3100	0.5	115.0050	114.2800	115.0050	19,009	5y Fut
TYAU9	116.1150	3.00	116.1400	116.0650	116.1050	58,476	10y Fut
USAU9	118.1400	7.00	118.1600	118.0700	118.1100	9,009	30y Fut
	Last	Net	High	Low	Open	Volume	Sym Name
BUS02P	100.0450	(0.70)	100.0500	100.0370	100.0450	na	2y Cash
BUS03P	100.2850	(1.50)	100.3000	100.2670	100.2920	na	3y Cash
BUS05P	100.1670	1.00	100.1720	100.1320	100.1600	na	5y Cash
BUS07P	100.0850	0.50	100.1050	100.0500	100.0800	na	7y Cash
BUS10P	96.1800	1.50	96.2600	96.1000	96.1000	na	10y Cash
BUS30P	98.1900	(2.00)	98.2200	98.1300	98.1450	na	30y Cash
	Last	Net	High	Low	Open	Volume	Sym Name
BUS02Y	1.053	0.160	1.065	1.045	1.058	na	2y Yield
BUS03Y	1.561	0.120	1.583	1.547	1.556	na	3y Yield
BUS05Y	2.511	(0.170)	2.536	2.509	2.518	na	5y Yield
BUS07Y	3.202	0.100	3.224	3.197	3.210	na	7y Yield
BUS10Y	3.541	(0.010)	3.572	3.510	3.550	na	10y Yield
BUS30Y	4.330	0.020	4.343	4.328	4.345	na	30y Yield

## Notes:

Regarding the futures quotes: .2 .5 & .7  
represent 1/4, 1/2, & 3/4s.

	M Duration	DV01 32	DV01 \$	DV01 Box	CF	
<b>30y</b>	16.64	5.61	\$1,753	11.22	n/a	<b>30y</b>
<b>10y</b>	8.35	2.72	\$849	5.43	n/a	<b>10y</b>
<b>7y</b>	6.21	2.10	\$656	4.20	n/a	<b>7y</b>
<b>5y</b>	4.65	1.56	\$488	6.25	n/a	<b>5y</b>
<b>3y</b>	2.86	0.95	\$297	3.80	n/a	<b>3y</b>
<b>2y</b>	1.96	0.64	\$200	2.56	n/a	<b>2y</b>
<b>ZB</b>	10.02	4.18	\$131	4.18	0.7593	<b>ZB</b>
<b>ZN</b>	5.82	2.36	\$74	4.71	0.7941	<b>ZN</b>
<b>ZF</b>	4.19	1.60	\$50	6.40	0.8622	<b>ZF</b>
<b>Z3N</b>	2.81	1.08	\$34	4.34	0.7941	<b>Z3N</b>
<b>ZT</b>	1.91	0.72	\$23	2.88	0.9201	<b>ZT</b>

DV01 32, said differently, is "how many TICS are in a basis point?".

Example, If **ZN** moves 1-basis point, then, it's moved 2.47 tics (Today, 04/28/09, the value in the box is 2.47).

Since ZN trades in half tics, then, 4.95 boxes = 1 basis point in ZN. (Again, today, 04/28/09, the value in the box is 4.95). Of course the values will be different as you look at this. But, they won't be that much different. So, I think you can get the idea I'm trying to get across.

#### Notes

CF = Conversion Factor

MDuration = Modified Macaulay Duration

MDuration & DV01s for Futures are based on proxy issue (CTD)

DV01 Box = Dollar Value of 1 basis point move per Box

## US Financial Futures

	ZB	ZN	ZF	Z3N	ZT
<b>ZB</b>		1.77	2.61	1.93	2.90
<b>ZN</b>	0.56		1.47	1.09	1.64
<b>ZF</b>	0.38	0.68		0.74	1.11
<b>Z3N</b>	0.51	0.90	1.32		1.47
<b>ZT</b>	0.34	0.61	0.90	1.33	

## US Treasuries vs US Financial Futures

	2y	3y	5y	7y	10y	30y
<b>ZB</b>	1.5	2.3	3.7	5.0	6.50	13.4
<b>ZN</b>	2.7	4.0	6.6	8.9	11.53	23.8
<b>ZF</b>	4.0	5.9	9.8	13.1	16.98	35.1
<b>Z3N</b>	3.0	4.4	7.2	9.7	12.52	25.9
<b>ZT</b>	4.4	6.6	10.8	14.6	18.86	38.9

## US Treasuries

	2y	3y	5y	7y	10y	30y
<b>2y</b>		1.48	2.44	3.27	4.24	8.75
<b>3y</b>	0.67		1.64	2.21	2.86	5.90
<b>5y</b>	0.41	0.61		1.34	1.74	3.59
<b>7y</b>	0.31	0.45	0.74		1.30	2.67
<b>10y</b>	0.24	0.35	0.57	0.77		2.06
<b>30y</b>	0.11	0.17	0.28	0.37	0.48	

## US Financial Futures vs German Futures

	ZB	ZN	ZF	ZT
<b>Bund (U)</b>	1.00	1.86	2.55	3
<b>Bobl (U)</b>	0.62	1.00	1.50	1.69
<b>Shatz (U)</b>	0.24	0.42	0.60	0.68

## German Futrues vs German Futures

	Bund (U)	Bobl (U)	Shatz (U)
<b>Bund (U)</b>		1.70	4.21
<b>Bobl (U)</b>	0.59		2.47
<b>Shatz (U)</b>	0.24	0.40	

## US Treasuries vs German Futures

	2y	3y	5y	7y	10y	30y
<b>Bund (U)</b>	1.5	2.3	3.6	4.7	6.3	12.9
<b>Bobl (U)</b>	2.7	3.9	6.3	8.0	11	22.3
<b>Shatz (U)</b>	6.8	9.9	16.1	19.7	27.9	56.9

Note: If you are looking at a matrix with Eurex products then those ratios are pulled from Bloomberg and are static. Meaning, I only update them once in a while but always on rolls. I calculate the other matrixes, with US products, everyday

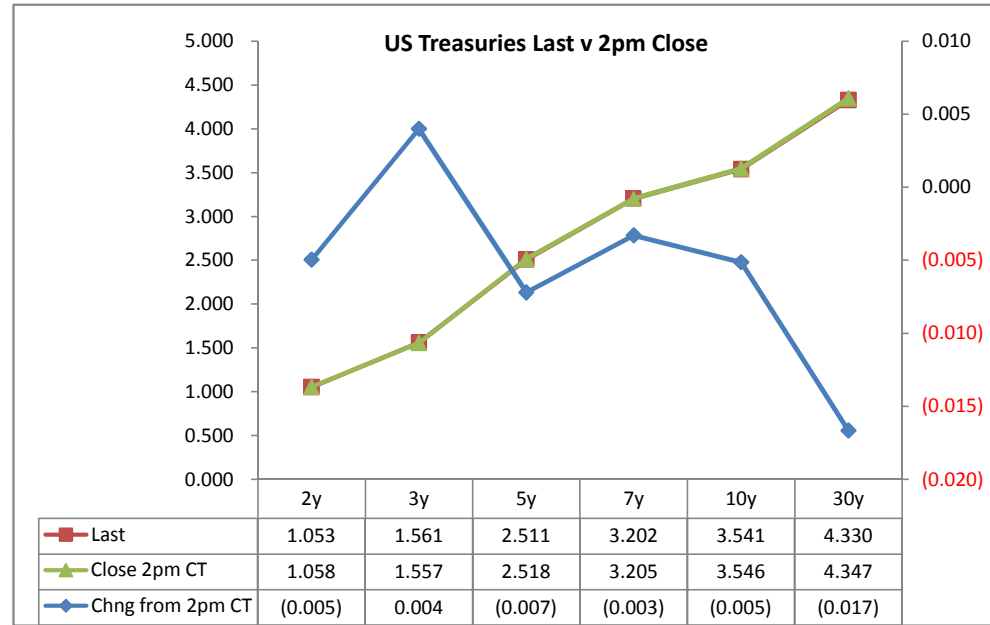
Treasury Closes: 2pm CT vs this Morning

	Cpn	Mty	Close 32	Close	Last	Chng	Basis (CF)		Close 32	Last	
						from 2pm	Close	Last			
2y	2.625	6/30/14	100.0450	1.058	1.053	(0.005)	17.73	17.73	108.0750	108.075	TUAU9
3y	1.875	6/15/12	100.2925	1.557	1.561	0.004	26.33	28.09	111.1950	111.167	Z3NU9
5y	2.250	5/31/14	100.1600	2.518	2.511	(0.007)	44.40	44.67	114.3050	114.310	FVAU9
7y	3.250	6/30/16	100.0900	3.205	3.202	(0.003)					
10y	3.125	5/15/19	96.1650	3.546	3.541	(0.005)	134.05	133.17	116.0850	116.115	TYAU9
30y	4.250	5/15/39	98.1200	4.347	4.330	(0.017)	275.19	277.25	118.0750	118.14	USAU9

Curve Spreads^

	Close bps	Last bps	Chng from
			2pm Cls
2/3	49.9	50.8	0.9
2/5	146.0	145.8	(0.2)
2/7	214.7	214.9	0.2
3/5	96.1	95.0	(1.1)
3/7	164.8	164.1	(0.7)
2/10	248.8	248.8	(0.0)
3/10	198.9	198.0	(0.9)
5/7	68.7	69.1	0.4
5/10	102.8	103.0	0.2
2/30	328.9	327.7	(1.2)
3/30	279.0	276.9	(2.1)
5/30	182.9	182.0	(0.9)
7/10	34.1	33.9	(0.2)
7/30	114.2	112.9	(1.3)
10/30	80.1	78.9	(1.2)

	Last	Chng on Day	Prcnt Chng
Emini SP	912.50	(6.75)	-0.73
Crude Oil	67.80	(1.51)	-2.18
Gold	932.60	(8.70)	-0.92
EURUSD	140.76	(0.67)	-0.47
USDJPY	96.70	0.03	0.03
DX	80.05	0.41	0.52



^matrix is linked to 'Monitor'

Cash Duration Matrix

**What is this? (1):**  
2yr cash has X% duration of 5yr cash.

**Cash Duration Matrix**

	2	5	10	30
2	100%			
5	42%	100%		
10	24%	56%	100%	
30	12%	28%	50%	100%

**What is this? (2):**  
- 2yr cash has DV01 of X\$.  
- Multiply the 2yr DV01 by the percent duration to come up with what the 2yrs DV01 SHOULD be compared to the 5yr.

**Cash Matrix [DV01 x Duration]**

	2	5	10	30
2	\$200			
5	\$206	\$488		
10	\$200	\$473	\$849	
30	\$207	\$490	\$880	\$1,753

**What is this? (3):**  
- Now you can see the over/under value, based on the DV01, from contract to contract. In this example we are looking at the 2yr compared to the 5yr.

**Cash Matrix [DV01 over / (under) valued]**

	2	5	10	30
2	\$200			
5	(\$6)	\$488		
10	\$1	\$15	\$849	
30	(\$7)	(\$2)	(\$31)	\$1,753

Or you can look at the over/under value as a percentage instead of dollar terms.

**Cash Matrix [DV01 over / (under) as %]**

	2	5	10	30
2	0.0%			
5	-2.8%	0.0%		
10	0.3%	3.2%	0.0%	
30	-3.3%	-0.4%	-3.5%	0.0%

## Tic for Tic Matrix

	2y	5y	10y	30y
ZT	0.89	2.17	3.77	7.79
ZF	0.40	0.98	1.70	3.51
ZN	0.27	0.66	1.15	2.38
ZB	0.15	0.37	0.65	1.34

	2y	5y	10y	30y
2y		2.44	4.24	8.75
5y	0.41		1.74	3.59
10y	0.24	0.57		2.06
30y	0.11	0.28	0.48	

	ZT	ZF	ZN	ZB
ZT		2.22	3.27	5.80
ZF	0.45		1.47	2.61
ZN	0.31	0.68		1.77
ZB	0.17	0.38	0.56	

## Box for Box Matrix

	2y	5y	10y	30y
ZT	0.89	2.17	7.55	15.58
ZF	0.40	0.98	3.40	7.01
ZN	0.54	1.33	1.15	2.38
ZB	0.61	0.75	1.30	1.34

	2y	5y	10y	30y
2y		2.44	2.12	4.38
5y	0.41		0.43	1.80
10y	0.47	2.30		2.06
30y	0.23	0.56	0.48	

	ZT	ZF	ZN	ZB
ZT		2.22	6.54	11.61
ZF	0.45		2.94	5.23
ZN	0.15	0.34		1.77
ZB	0.09	0.19	0.56	

	Libor\$ <sup>1</sup>	Repo Rt <sup>6</sup>
0/N	0.268	0.190
1week	0.284	0.180
2week	0.293	0.200

	Libor\$ <sup>1</sup>	Tbill	CP <sup>2</sup>
1M	0.304	0.149	0.300
3M	0.578	0.187	0.400
6M	1.079	0.317	0.850

	TSY	Swp	Swp Rate <sup>5</sup>	ED Pks <sup>3</sup>	TSY - ED Pk <sup>4</sup>
2y	1.053	43.25	1.49	2.451	1.398
5y	2.511	41.50	2.93		#VALUE!
10y	3.541	22.75	3.77		#VALUE!

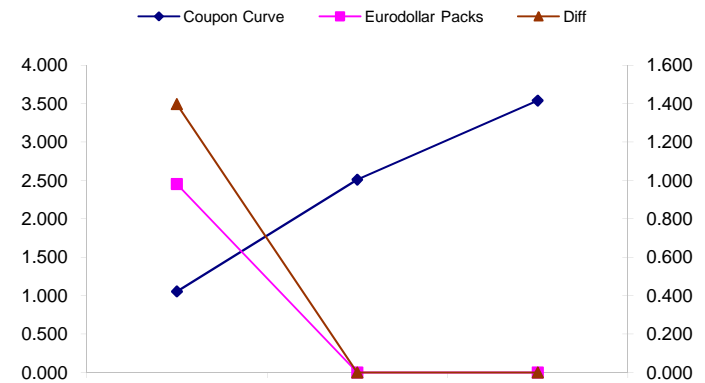
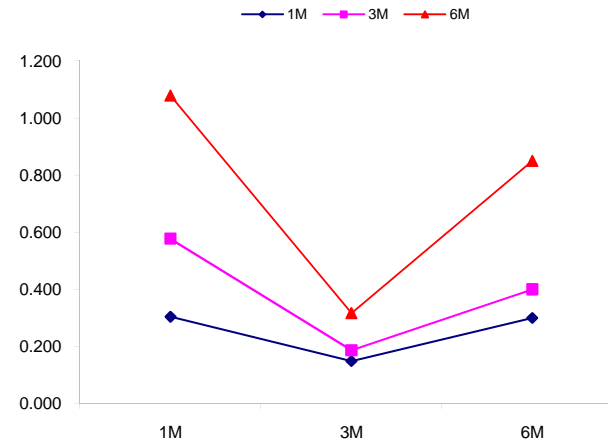
<u>2/5</u>	<u>Rd/Blu Pk</u>	<u>Diff</u>
145.8	#VALUE!	#VALUE!
<u>2/10</u>	<u>Rd/Gld Pk</u>	<u>Diff</u>
248.8	#VALUE!	#VALUE!
<u>5/10</u>	<u>Blu/Gld Pk</u>	<u>Diff</u>
103.0	#VALUE!	#VALUE!

Red pack / Blue pack is a 2/5 proxy  
 Red pack / Gold pack is a 2/10 proxy  
 Blue pack / Gold pack is a 5/10 proxy

"Swap spreads are essentially a measure of the difference between buying a safe government bond and making a riskier loan to a bank"  
 --WSJ

**Notes:**

- 1) Quoted in US Dollars
- 2) CP = Commercial Paper
- 3) ED Pks are colored for pack identifications. Example, the red pack is a 2-yr proxy and is colored red.
- 4) TSY yield minus ED Pk yield
- 5) Swap divided by 100 + TSY yield gives swap rate in basis points.
- 6) Repo Rt quotes is for overnight General Collateral



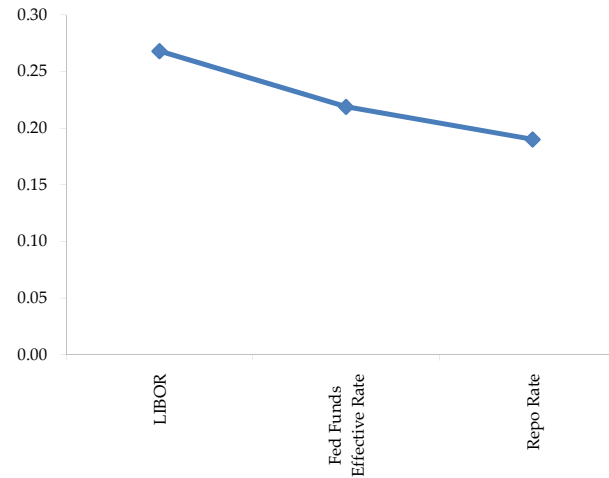
	Last	Chng	Term	Asset Type
USDLIBON	0.268	0.0006	Overnight	LIBOR
TUSFFRON	0.219	0.0000	Overnight	Fed Funds Effective Rate
TUSRPOON	0.190	0.0000	Overnight	Repo Rate
TEONIA01M	0.520	0.0010	1 month	Euribor OIS Rate
TEONIA03M	0.599	(0.0070)	3 month	Euribor OIS Rate
TSONIA01M	0.403	0.0010	1 month	Sterling OIS Rate
TSONIA03M	0.407	(0.0090)	3 month	Sterling OIS Rate
TUSOIS01M	0.205	(0.0050)	1 month	USD OIS Rate
TUSOIS03M	0.219	(0.0040)	3 month	USD OIS Rate

Example, below

Overnight Rates -EXAMPLE



Overnight Rates



A 'normal' lending curve looks like the chart to the left. That is, the Libor should be a bit higher than Fed Funds Effective rate (FFER), and the FFER should be a bit higher than the Repo Rate.

**The best time to view this page is to request that I take a snapshot during the day and send it to you personally.**

**The Fed Funds effective rate and the repo rate rarely update until after I send the morning email.**





