

**The Morning Email: Commitment of Traders (CoT) & Dealer Positions (DP)**

**Table of Contents**

- Pg 1** NYMEX: Energy Complex
- Pg 2** CME: Treasury Futures
- Pg 3** CME: Eurodollars
- Pg 4** Dealers: Total Securities Owned - GSE and Govs
- Pg 5** Dealers: Treasury Coupon Positions by Maturity
- Pg 6** Dealers: Total Corporate & Mortgage-backed Securitites Owned
- Pg 7** CIT Positions

Want something added? Let me know: [jgoulding@ghco.com](mailto:jgoulding@ghco.com)

**Disclaimer:** All information within this newsletter is meant for internal use at GH Trader's LLC, only. All information has been recorded to the best of my ability. This material is based upon information that I consider reliable, but I do not represent that it is accurate or complete.

	Current Positions									
	Small Spec			Large Spec			Commercials (Hedgers)			
	Long	Short	Net	Long	Short	Net	Long	Short	Net	
Crude Oil ^	116,407	101,705	14,702	202,172	101,151	101,021	1,336,821	1,452,544	(115,723)	Crude Oil
Heating Oil	45,550	32,229	13,321	39,867	7,923	31,944	175,324	220,590	(45,266)	Heating Oil
Unleaded Gas	18,622	14,489	4,133	61,501	10,352	51,149	121,557	176,841	(55,284)	Unleaded Gas
Natural Gas	91,079	47,800	43,279	157,057	225,167	(68,110)	363,162	338,331	24,831	Natural Gas

^ Light Sweet

As of	Week over Week Change			
	Sml Spec	Lrg Spec	Comm	
	Net	Net	Net	
6/30/2009	Crude Oil	(2,365)	71,130	(68,765)
	Heating Oil	8,451	(23,741)	15,288
	Unleaded Gas	(44,181)	118,374	(74,195)
	Natural Gas	28,577	(169,131)	140,554

Current Positions										
	Small Spec			Large Spec			Commercials (Hedgers)			
	Long	Short	Net	Long	Short	Net	Long	Short	Net	
ZF	187,513	194,837	(7,324)	75,703	116,360	(40,657)	524,144	476,163	47,981	ZF
ZN	251,443	305,709	(54,266)	92,326	194,935	(102,609)	821,809	664,934	156,875	ZN
ZB	114,352	141,693	(27,341)	72,146	151,156	(79,010)	553,743	447,391	106,352	ZB

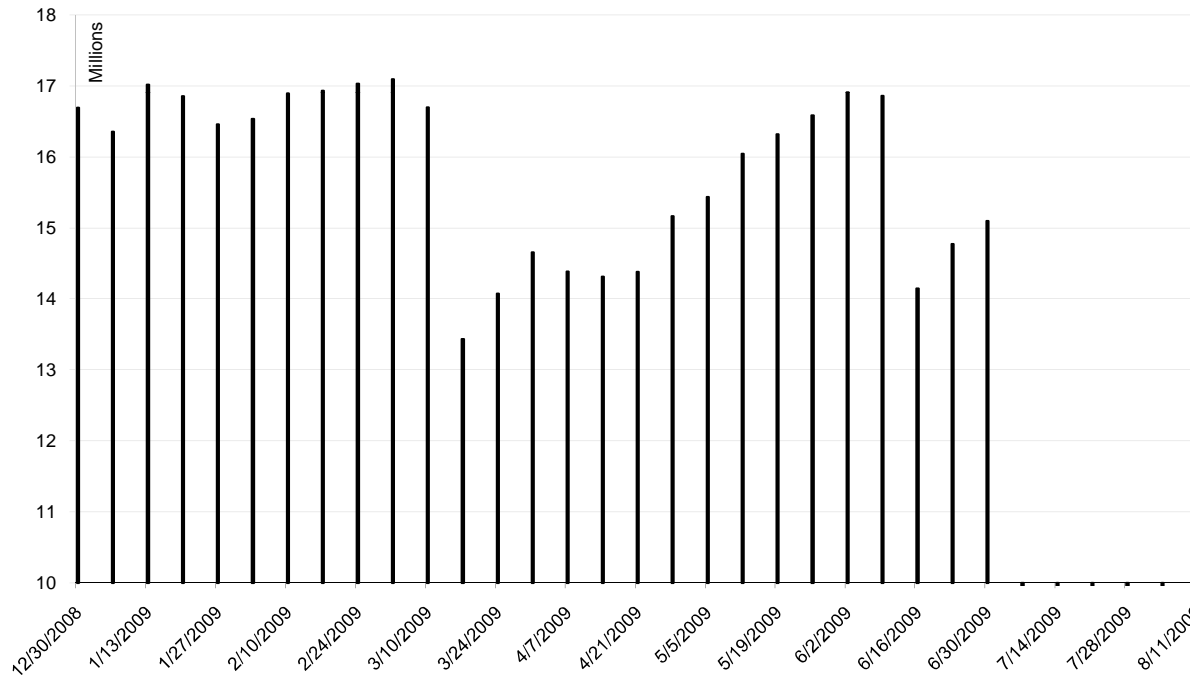
	Week over Week Change		
As of	Sml Spec	Lrg Spec	Comm
6/30/2009	Net	Net	Net
ZF	17,599	(5,091)	(12,507)
ZN	(12,290)	(15,159)	27,449
ZB	(9,445)	751	8,694

Current Positions								
Small Spec			Large Spec			Commercials		
Long	Short	Net	Long	Short	Net	Long	Short	Net
973,969	951,618	22,351	745,357	210,847	534,510	5,830,456	6,387,216	(470,107)

As of  
6/30/2009

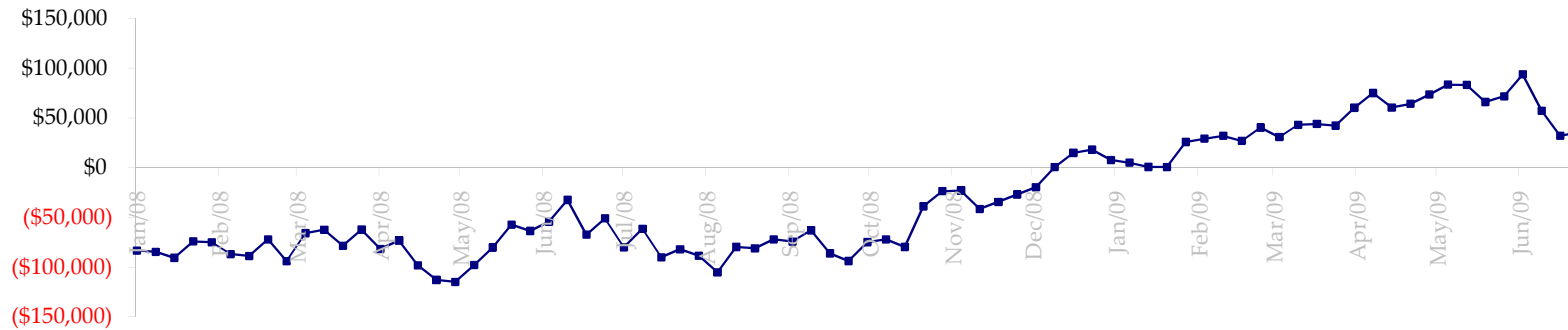
Week over Week Change		
Sm Spec	Lg Spec	Commrc
5,904	80,852	(86,653)

ED Total Open Interest

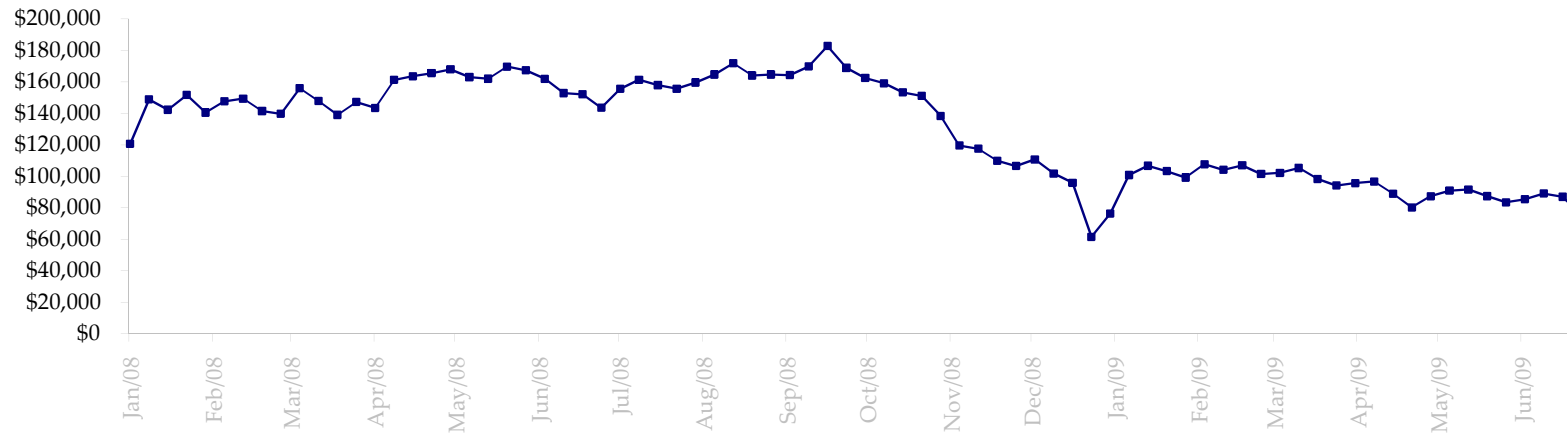


Date	Total O.I.
12/30/2008	16,692,040
1/6/2009	16,353,766
1/13/2009	17,017,481
1/20/2009	16,856,304
1/27/2009	16,457,134
2/3/2009	16,535,902
2/10/2009	16,891,000
2/17/2009	16,931,894
2/24/2009	17,032,099
3/3/2009	17,094,554
3/10/2009	16,698,308
3/17/2009	13,434,827
3/24/2009	14,073,250
3/31/2009	14,657,253
4/7/2009	14,384,480
4/14/2009	14,314,271
4/21/2009	14,383,122
4/28/2009	15,165,072
5/5/2009	15,434,647
5/12/2009	16,042,275
5/19/2009	16,320,053
5/26/2009	16,585,652
6/2/2009	16,909,646
6/9/2009	16,860,908
6/16/2009	14,144,586
6/23/2009	14,773,010
6/30/2009	15,099,463
7/7/2009	0
7/14/2009	0
7/21/2009	0
7/28/2009	0
8/4/2009	0
8/11/2009	0

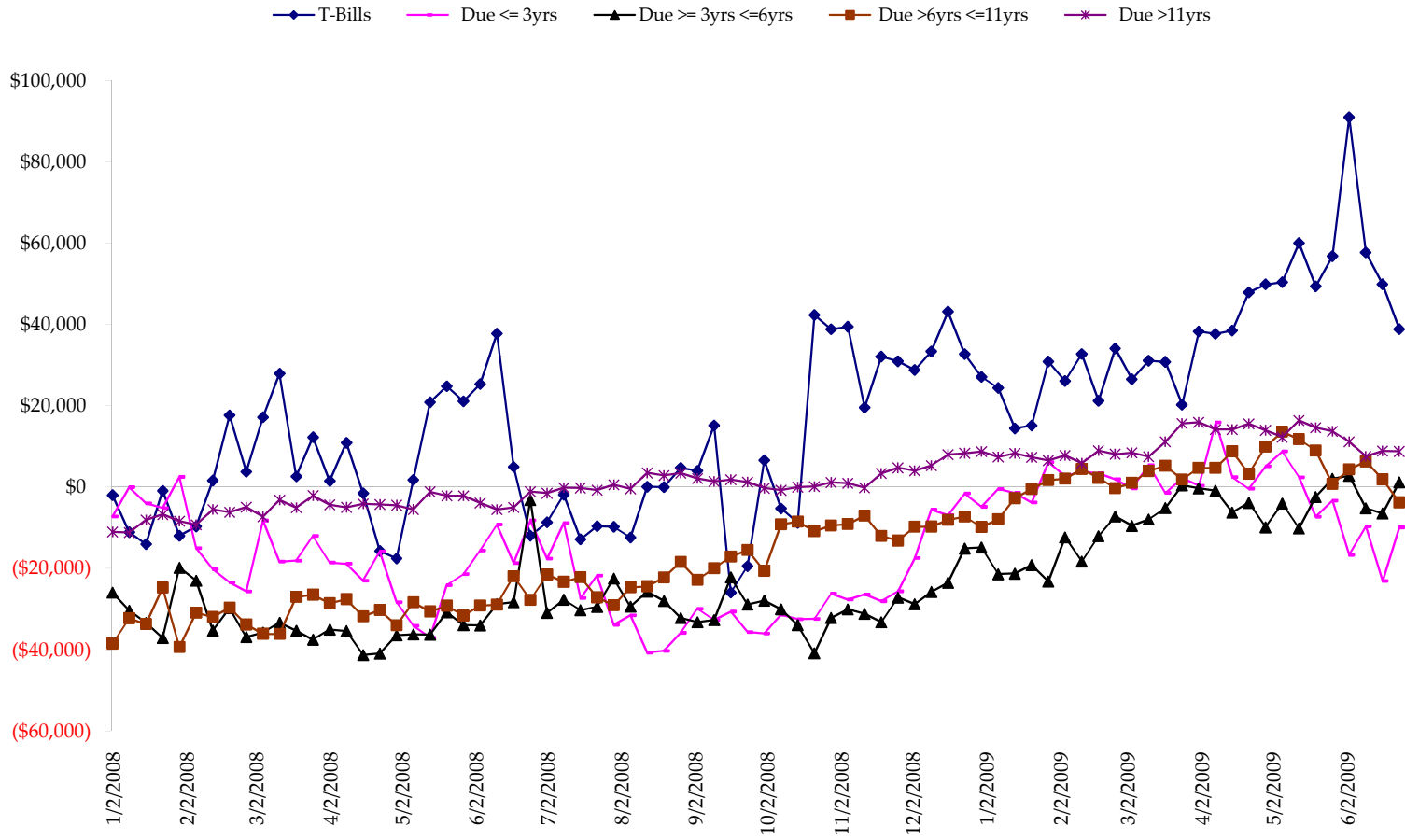
Total US Government Total Securities: Coupons - (\$mln)



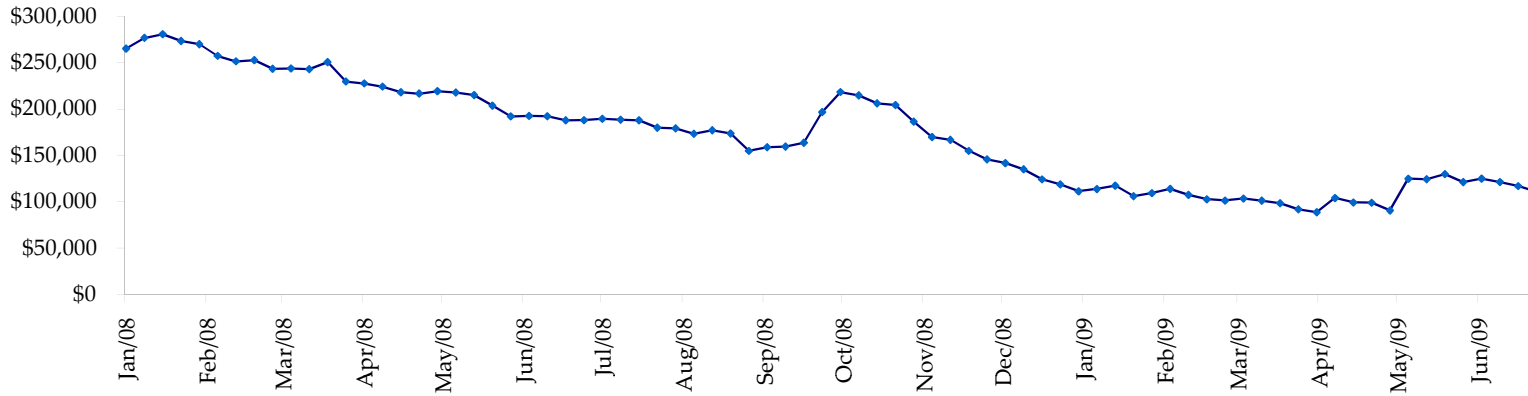
Fed Agency & GSE Total Securities: Coupons - (\$mln)



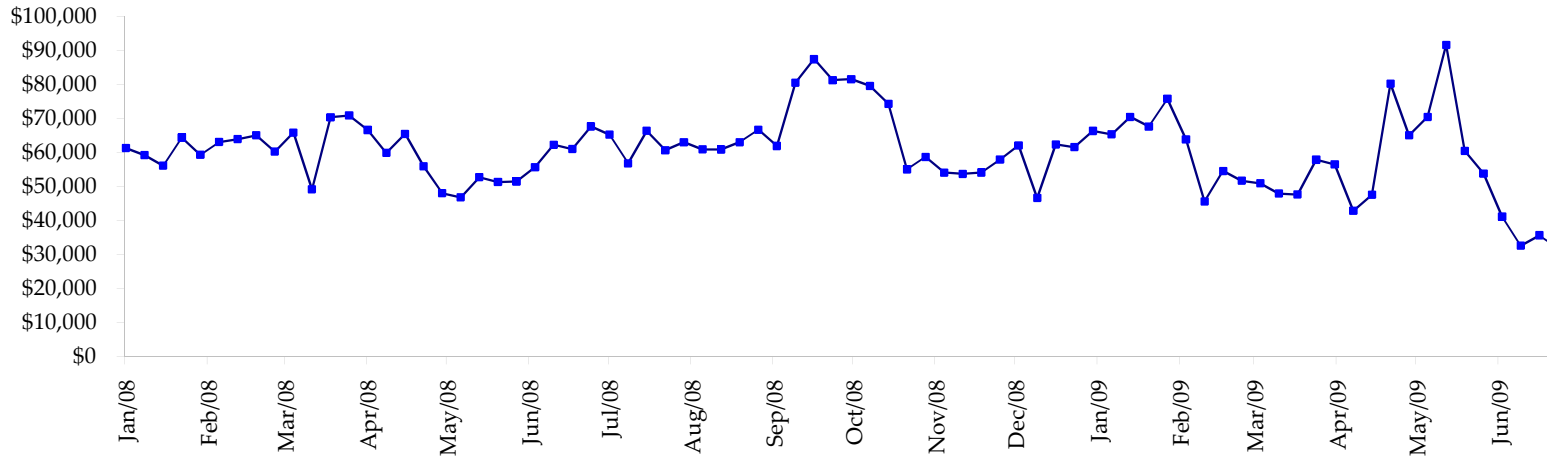
All dates are 'as of'.



Total Corporate Securities - (\$mln)



Total Mortgage Position - (\$mln)



We are interested in the last column, CIT % OI. That stands for Commercial Index Traders, percent Open Interest.

This table, compliments of CommitmentofTraders.com

**Supplemental Commitments of Traders Report breaking out the Commercial Index Traders (CIT).**  
**Analysis of open interest -with option deltas- as of 06/30/2009**  
**Summary prepared by www.Commitments of Traders .com**

Commodity	Small Sp			Large Sp			- No CIT			Commerc			CIT	Total	CIT
	NonRepo			Non Com			Comm			Long	Short	Net			
	Long	Short	Net	Long	Short	Net	Long	Short	Net	Long	Short	Net	Interest		
Wheat	29532	49142	-19610	43416	80043	-36627	44944	140670	-95726	170256	18292	151964	383387	39%	
K C Wheat	15260	22872	-7612	9792	9237	555	24184	44613	-20429	27875	389	27486	91080	30%	
Corn	120807	245482	-124675	153600	117252	36348	312216	529057	-216841	351754	46587	305167	1277177	23%	
Soybeans	53851	89945	-36094	95135	21848	73287	104674	278955	-174281	155474	18386	137088	578217	23%	
Soybean Oil	29032	29110	-78	20380	48479	-28099	97649	130136	-32487	66227	5565	60662	283193	21%	
Cotton	11623	9234	2389	20583	10096	10487	21270	101149	-79879	68290	1286	67004	155415	43%	
Lean Hogs	23160	30597	-7437	15762	44104	-28342	13727	37060	-23333	61262	2149	59113	167317	35%	
Lv Cattle	24503	46507	-22004	47463	40760	6703	37751	116052	-78301	94406	805	93601	262646	35%	
Feeder	5994	10943	-4949	6038	3076	2962	2153	7471	-5318	7347	42	7305	27180	26%	
Cocoa	7525	4390	3135	28886	14772	14114	50457	84509	-34052	18137	1333	16804	118314	14%	
Sugar No 11	91762	55617	36145	134543	12371	122172	270802	635779	-364977	295506	88846	206660	1038949	19%	
Coffee	8424	7392	1032	19562	13981	5581	34918	83568	-48650	42541	504	42037	141516	29%	
			-179758			179141			-1174274			1174891	4524391	25%	

Most Current Date

**Supplemental Commitments of Traders Report breaking out the Commercial Index Traders (CIT).**  
**Analysis of open interest -with option deltas- as of 06/23/2009**  
**Summary prepared by www.Commitments of Traders .com**

Commodity	Small Sp			Large Sp			- No CIT			Commerc			CIT	Total	CIT
	NonRepo			Non Com			Comm			Long	Short	Net			
	Long	Short	Net	Long	Short	Net	Long	Short	Net	Long	Short	Net	Interest		
Wheat	36898	51014	-14116	42653	70220	-27567	59332	161354	-102022	169411	25707	143704	446062	32%	
K C Wheat	18126	23765	-5639	10857	7285	3572	25872	50405	-24533	27882	1281	26601	98964	26%	
Corn	130176	255699	-125523	158896	113775	45121	337852	554711	-216859	353195	55933	297262	1388160	21%	
Soybeans	60019	90380	-30361	95386	21207	74179	126755	303400	-176645	155996	23168	132828	661897	20%	
Soybean Oil	27391	25309	2082	25224	41929	-16705	102078	147775	-45697	66528	6208	60320	306744	19%	
Cotton	11214	9597	1617	18597	8530	10067	26261	99550	-73289	63004	1398	61606	151430	40%	
Lean Hogs	21270	26520	-5250	17489	42695	-25206	12511	37863	-25352	60338	4529	55809	165303	33%	
Lv Cattle	25768	46271	-20503	43636	50713	-7077	42040	105715	-63675	92355	1101	91254	258453	35%	
Feeder	5824	9106	-3282	5189	5060	129	2622	6548	-3926	7268	190	7078	26379	26%	
Cocoa	8287	10383	-2096	30794	14183	16611	50576	81488	-30912	17489	1091	16398	120153	13%	
Sugar No 11	90035	55708	34327	119514	17567	101947	298811	637818	-339007	286092	83359	202733	1018956	19%	
Coffee	8699	8212	487	19622	10433	9189	36573	84009	-47436	41194	3434	37760	142104	26%	
			-168257			184260			-1149353			1133353	4784605	23%	

Prior Week's Date