

The Morning Email: Commitment of Traders (CoT) & Dealer Positions (DP)

Table of Contents

- Pg 1** NYMEX: Energy Complex
- Pg 2** CME: Treasury Futures
- Pg 3** CME: Eurodollars
- Pg 4** Dealers: Total Securities Owned - GSE and Govs
- Pg 5** Dealers: Treasury Coupon Positions by Maturity
- Pg 6** Dealers: Total Corporate & Mortgage-backed Securites Owned
- Pg 7** CIT Positions

Want something added? Let me know: jgoulding@ghco.com

Disclaimer: All information within this newsletter is meant for internal use at HTG Capital Partners, only. All information has been recorded to the best of my ability. This material is based upon information that I consider reliable, but I do not represent that it is accurate or complete.

	Current Positions									
	Small Spec			Large Spec			Commercials (Hedgers)			
	Long	Short	Net	Long	Short	Net	Long	Short	Net	
Crude Oil ^	118,108	102,725	15,383	189,896	107,632	82,264	1,486,783	1,584,429	(97,646)	Crude Oil
Heating Oil	42,726	35,869	6,857	37,393	19,402	17,991	200,366	225,213	(24,847)	Heating Oil
Unleaded Gas	14,693	16,988	(2,295)	45,561	8,164	37,397	142,466	177,569	(35,103)	Unleaded Gas
Natural Gas	101,925	45,969	55,956	168,088	242,153	(74,065)	366,709	348,600	18,109	Natural Gas
^ Light Sweet										
	Week over Week Change									
As of				Sml Spec	Lrg Spec	Comm				
7/21/2009				Net	Net	Net				
				Crude Oil	7,794	53,684	(61,478)			
				Heating Oil	5,997	(25,023)	19,027			
				Unleaded Gas	(45,533)	106,750	(61,217)			
				Natural Gas	40,573	(156,329)	115,755			

Current Positions										
	Small Spec			Large Spec			Commercials (Hedgers)			
	Long	Short	Net	Long	Short	Net	Long	Short	Net	
ZF	181,603	173,817	7,786	114,819	84,119	30,700	498,527	537,014	(38,487)	ZF
ZN	268,738	333,587	(64,849)	81,704	131,659	(49,955)	899,945	785,141	114,804	ZN
ZB	117,606	139,330	(21,724)	65,966	137,571	(71,605)	539,231	445,903	93,328	ZB

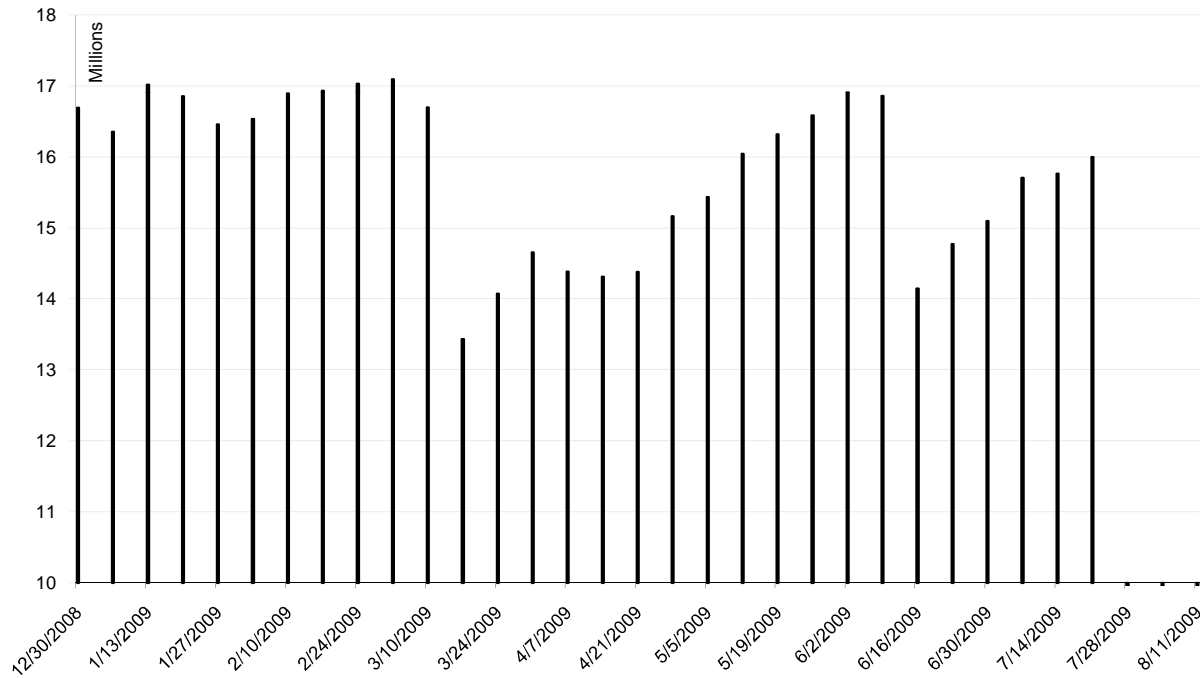
Week over Week Change					
As of		Sml Spec	Lrg Spec	Comm	
7/21/2009		Net	Net	Net	
	ZF	(4,581)	17,345	(12,765)	
	ZN	(24,084)	31,811	(7,226)	
	ZB	(2,488)	(1,865)	4,353	

Current Positions								
Small Spec			Large Spec			Commercials		
Long	Short	Net	Long	Short	Net	Long	Short	Net
1,073,646	1,023,788	49,858	943,956	223,207	720,749	5,982,299	6,752,906	(770,607)

As of
7/21/2009

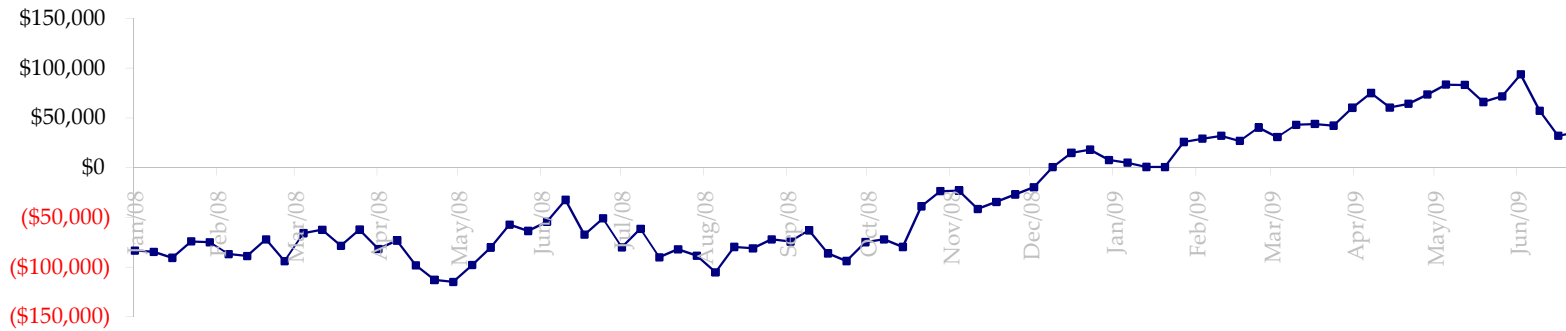
Week over Week Change		
Sm Spec	Lg Spec	Commrc
(7,619)	(3,444)	11,063

ED Total Open Interest

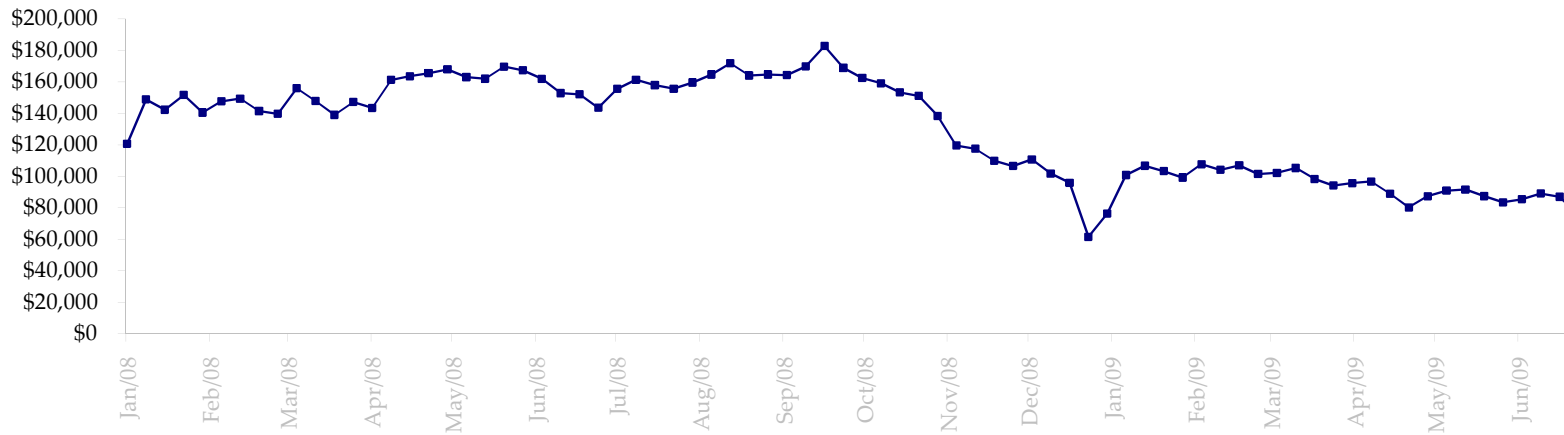


Date	Total O.I.
12/30/2008	16,692,040
1/6/2009	16,353,766
1/13/2009	17,017,481
1/20/2009	16,856,304
1/27/2009	16,457,134
2/3/2009	16,535,902
2/10/2009	16,891,000
2/17/2009	16,931,894
2/24/2009	17,032,099
3/3/2009	17,094,554
3/10/2009	16,698,308
3/17/2009	13,434,827
3/24/2009	14,073,250
3/31/2009	14,657,253
4/7/2009	14,384,480
4/14/2009	14,314,271
4/21/2009	14,383,122
4/28/2009	15,165,072
5/5/2009	15,434,647
5/12/2009	16,042,275
5/19/2009	16,320,053
5/26/2009	16,585,652
6/2/2009	16,909,646
6/9/2009	16,860,908
6/16/2009	14,144,586
6/23/2009	14,773,010
6/30/2009	15,099,463
7/7/2009	15,707,494
7/14/2009	15,764,826
7/21/2009	15,999,802
7/28/2009	0
8/4/2009	0
8/11/2009	0

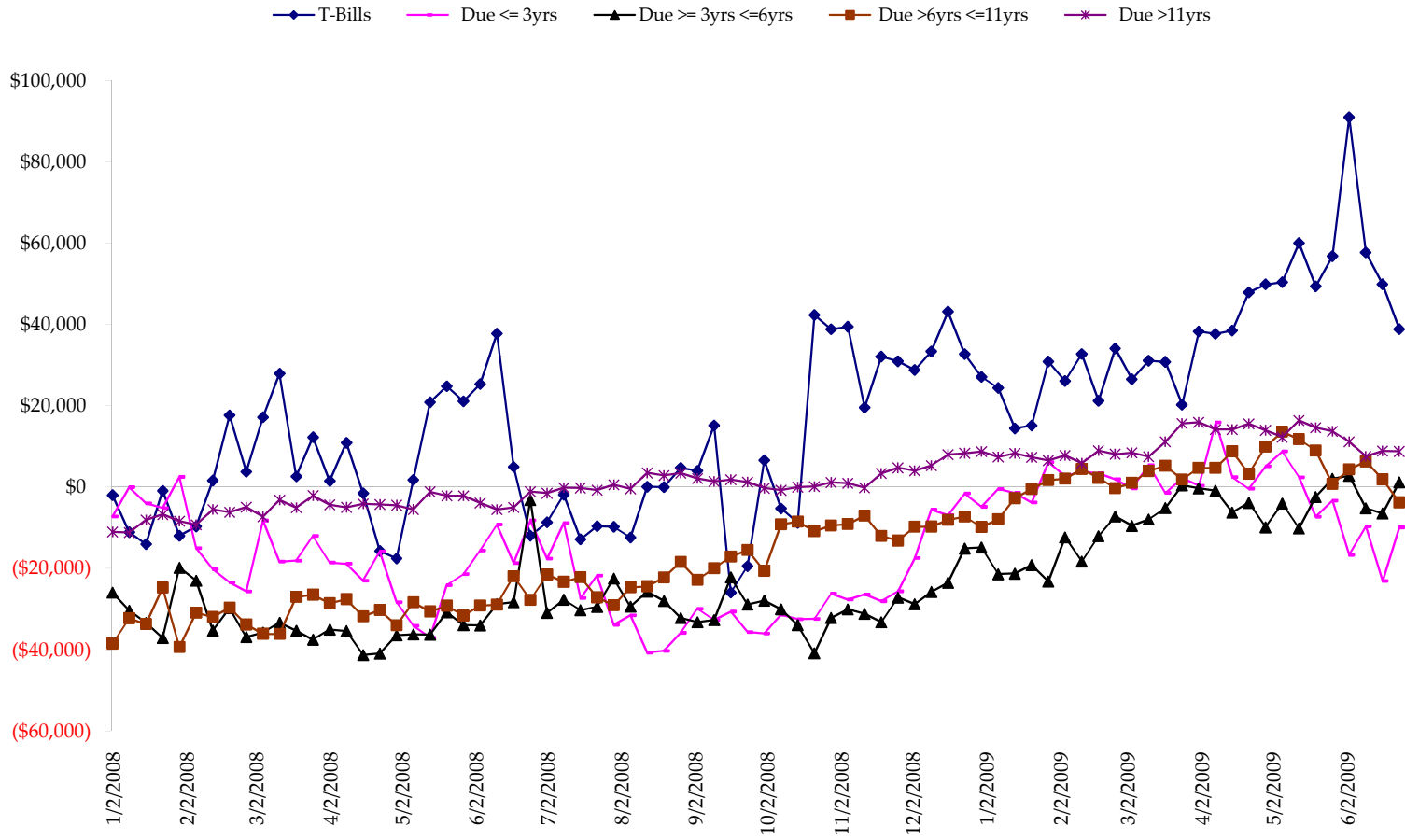
Total US Government Total Securities: Coupons - (\$mln)



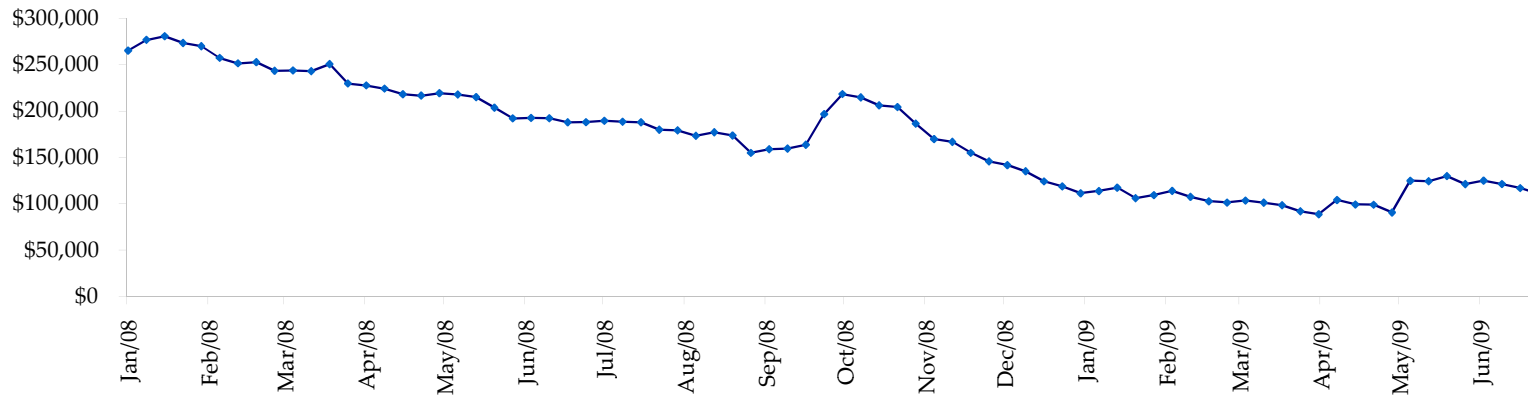
Fed Agency & GSE Total Securities: Coupons - (\$mln)



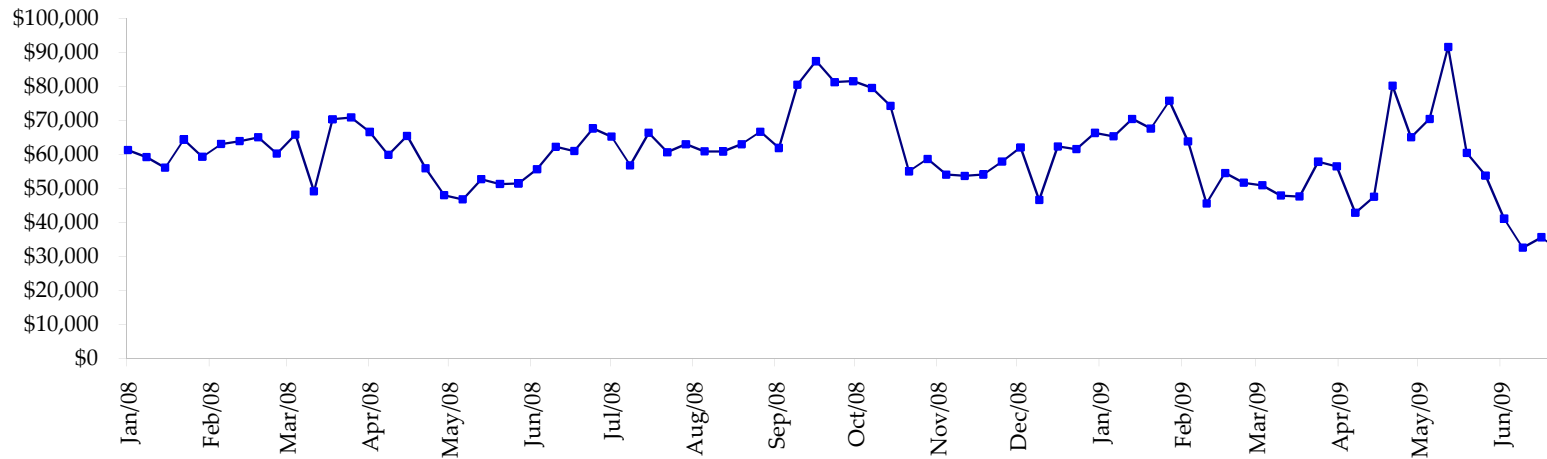
All dates are 'as of'.



Total Corporate Securities - (\$mln)



Total Mortgage Position - (\$mln)



We are interested in the last column, CIT % OI. That stands for Commercial Index Traders, percent Open Interest.

This table, compliments of CommitmentofTraders.com

Supplemental Commitments of Traders Report breaking out the Commercial Index Traders (CIT).
Analysis of open interest -with option deltas- as of 07/21/2009
Summary prepared by www.Commitments of Traders .com

Commodity	Small Spc			Large Sp			- No CIT			Commerc			- No CIT			CIT	Total	CIT
	NonRepo			Non Com			Comm			Comm			Open	% OI				
	Long	Short	Net	Long	Short	Net	Long	Short	Net	Long	Short	Net			Interest			
Wheat	33496	49995	-16499	38444	89089	-50645	36359	130517	-94158	184921	23618	161303	402826	40%				
K C Wheat	16246	23168	-6922	12347	11650	697	24002	47990	-23988	32272	2057	30215	100490	30%				
Corn	129611	257111	-127500	130946	151348	-20402	319033	486273	-167240	370314	55172	315142	1356748	23%				
Soybeans	46403	90605	-44202	61220	30399	30821	118638	251278	-132640	162962	16940	146022	571460	25%				
Soybean Oil	22118	25455	-3337	15471	56731	-41260	104411	128674	-24263	74252	5391	68861	299095	23%				
Cotton	15656	6122	9534	30657	4197	26460	25184	134395	-109211	74358	1141	73217	186550	39%				
Lean Hogs	24800	31406	-6606	18250	36734	-18484	10136	47204	-37068	64107	1949	62158	157906	39%				
Lv Cattle	30032	53446	-23414	55233	29634	25599	35364	135004	-99640	98461	1007	97454	283490	34%				
Feeder	6394	12116	-5722	8097	1900	6197	2703	10031	-7328	7565	711	6854	30779	22%				
Cocoa	11301	5646	5655	32959	18030	14929	50794	89214	-38420	19061	1225	17836	127305	14%				
Sugar No 11	95138	61604	33534	129428	11723	117705	252800	607633	-354833	299612	96018	203594	1032516	19%				
Coffee	10465	8629	1836	16381	16429	-48	33038	76055	-43017	41927	699	41228	136482	30%				
			-183643			91569			-1131806			1223884	4685647	26%				

← Most Current Date

Supplemental Commitments of Traders Report breaking out the Commercial Index Traders (CIT).
Analysis of open interest -with option deltas- as of 07/14/2009
Summary prepared by www.Commitments of Traders .com

Commodity	Small Spc			Large Sp			- No CIT			Commerc			- No CIT			CIT	Total	CIT
	NonRepo			Non Com			Comm			Comm			Open	% OI				
	Long	Short	Net	Long	Short	Net	Long	Short	Net	Long	Short	Net			Interest			
Wheat	32229	47539	-15310	34129	87482	-53353	37896	130723	-92827	183202	21712	161490	392282	41%				
K C Wheat	14938	23050	-8112	11184	11952	-768	27248	47254	-20006	30634	1748	28886	100267	28%				
Corn	125111	246753	-121642	136103	140841	-4738	306520	493381	-186861	365628	52386	313242	1298664	24%				
Soybeans	54375	93677	-39302	67124	31473	35651	117442	258097	-140655	162376	18071	144305	575545	25%				
Soybean Oil	25596	28589	-2993	16451	59829	-43378	106629	128273	-21644	73783	5768	68015	299717	22%				
Cotton	15479	6030	9449	28531	4573	23958	23110	128295	-105185	72746	967	71779	178007	40%				
Lean Hogs	22911	29023	-6112	16997	39358	-22361	11515	43911	-32396	63202	2332	60870	166559	36%				
Lv Cattle	26233	49042	-22809	53118	32597	20521	34045	127229	-93184	96516	1043	95473	270962	35%				
Feeder	6222	12146	-5924	7663	1967	5696	2249	9238	-6989	7771	555	7216	29165	24%				
Cocoa	8401	3622	4779	29765	17221	12544	50902	85880	-34978	18785	1130	17655	120405	14%				
Sugar No 11	94956	59743	35213	123115	10838	112277	247010	595551	-348541	296251	95201	201050	1026949	19%				
Coffee	9623	8929	694	15612	17485	-1873	36056	75839	-39783	41732	770	40962	135436	30%				
			-172069			84176			-1123049			1210943	4593958	26%				

← Prior Week's Date