



7/31/2009 5:47

The Morning Email: Treasuries

Table of Contents

- Pg 1 Auctions
- Pg 2 Quotes
- Pg 3 Duration, DV01s, CFs
- Pg 4 Hedge Ratio's
- Pg 5 Treasury Closes: 2pm CT vs this Morning
- Pg 6 Cash Duration Matrix
- Pg 7 Tic for Tic & Box for Box Matrix
- Pg 8 Key Money Rate, Spreads, Swaps, Packs
- Pg 9 Libor, Fed Funds (OIS), Repo, SONIA & EONIA Rates

Want something added? Let me know: jgoulding@ghco.com

Disclaimer: All information within this newsletter is meant for internal use at HTG Capital Partners, only. All information has been recorded to the best of my ability. This material is based upon information that I consider reliable, but I do not represent that it is accurate or complete.

	32nds					
	2 y	3 y	5y	7y	10y	30y
Auction Price	99.269	99.302	99.084	99.163	97.320	99.033
Auction Yield Stop	1.080	1.519	2.689	3.369	3.365	4.303
Actual Auction Date	7/28/2009	7/7/2009	7/29/2009	7/30/2009	07/08/09 r	7/09/2009 r

Quotes

		32 nds					
	Last	Net	High	Low	Open	Volume	Sym Name
TUAU9	108.0420	1.0	108.0520	108.0320	108.0520	20,693	2y Fut
Z3NU9	111.1550	3.0	#VALUE!	#VALUE!	#VALUE!	0	3y Fut
FVAU9	114.2700	4.5	114.2920	114.2350	114.2850	36,200	5y Fut
TYAU9	116.1350	7.50	116.1500	116.0500	116.1200	66,107	10y Fut
USAU9	117.0850	6.50	117.1650	117.0300	117.0850	11,619	30y Fut
	Last	Net	High	Low	Open	Volume	Sym Name
BUS02P	99.2000	(0.50)	99.2050	99.1950	99.2100	na	2y Cash
BUS03P	99.1450	(0.50)	99.1520	99.1320	99.1500	na	3y Cash
BUS05P	99.2950	(2.20)	99.3170	99.2600	99.2900	na	5y Cash
BUS07P	99.2600	(4.50)	99.2800	99.2200	99.2700	na	7y Cash
BUS10P	95.2850	(4.00)	96.0150	95.2450	96.0050	na	10y Cash
BUS30P	97.0050	(4.50)	97.1150	96.2900	97.0000	na	30y Cash
	Last	Net	High	Low	Open	Volume	Sym Name
BUS02Y	1.183	0.170	1.199	1.183	1.160	na	2y Yield
BUS03Y	1.691	0.090	1.705	1.683	1.680	na	3y Yield
BUS05Y	2.642	0.150	2.665	2.627	2.644	na	5y Yield
BUS07Y	3.278	0.380	3.301	3.270	3.275	na	7y Yield
BUS10Y	3.624	0.190	3.639	3.612	3.612	na	10y Yield
BUS30Y	4.428	0.240	4.438	4.410	4.414	na	30y Yield

Notes:

Regarding the futures quotes: .2 .5 & .7
represent 1/4, 1/2, & 3/4s.

	M Duration	DV01 32	DV01 \$	DV01 Box	CF	
30y	16.44	5.48	\$1,712	10.96	n/a	30y
10y	8.26	2.68	\$837	5.35	n/a	10y
7y	6.21	2.09	\$654	4.19	n/a	7y
5y	4.65	1.55	\$486	6.22	n/a	5y
3y	2.87	0.94	\$292	3.74	n/a	3y
2y	1.97	0.64	\$199	2.55	n/a	2y
ZB	9.90	4.09	\$128	4.09	0.7593	ZB
ZN	5.73	2.32	\$73	4.64	0.7941	ZN
ZF	4.10	1.57	\$49	6.27	0.8602	ZF
Z3N	2.72	1.05	\$33	4.20	0.7941	Z3N
ZT	1.83	0.69	\$22	2.75	0.9144	ZT

DV01 32, said differently, is "how many TICS are in a basis point?".

Example, If **ZN** moves 1-basis point, then, it's moved 2.47 tics (Today, 04/28/09, the value in the box is 2.47).

Since ZN trades in half tics, then, 4.95 boxes = 1 basis point in ZN. (Again, today, 04/28/09, the value in the box is 4.95). Of course the values will be different as you look at this. But, they won't be that much different. So, I think you can get the idea I'm trying to get across.

Notes

CF = Conversion Factor

MDuration = Modified Macaulay Duration

MDuration & DV01s for Futures are based on proxy issue (CTD)

DV01 Box = Dollar Value of 1 basis point move per Box

US Financial Futures

	ZB	ZN	ZF	Z3N	ZT
ZB		1.76	2.61	1.95	2.97
ZN	0.57		1.48	1.10	1.69
ZF	0.38	0.67		0.75	1.14
Z3N	0.50	0.88	1.30		1.48
ZT	0.34	0.59	0.88	1.31	

US Treasuries vs US Financial Futures

	2y	3y	5y	7y	10y	30y
ZB	1.6	2.3	3.8	5.1	6.54	13.4
ZN	2.7	4.0	6.7	9.0	11.53	23.6
ZF	3.9	6.0	9.9	13.2	17.09	35.0
Z3N	3.0	4.5	7.4	10.0	12.74	26.1
ZT	4.6	6.8	11.3	15.0	19.46	39.8

US Treasuries

	2y	3y	5y	7y	10y	30y
2y		1.47	2.44	3.29	4.20	8.60
3y	0.68		1.66	2.24	2.86	5.85
5y	0.41	0.60		1.35	1.72	3.52
7y	0.30	0.45	0.74		1.28	2.62
10y	0.24	0.35	0.58	0.78		2.05
30y	0.12	0.17	0.28	0.38	0.49	

US Financial Futures vs German Futures

	ZB	ZN	ZF	ZT
Bund (U)	1.00	1.86	2.55	Jan-00
Bobl (U)	0.62	1.00	1.50	Jan-00
Shatz (U)	0.24	0.42	0.60	Jan-00

German Futrues vs German Futures

	Bund (U)	Bobl (U)	Shatz (U)
Bund (U)		1.70	4.21
Bobl (U)	0.59		2.47
Shatz (U)	0.24	0.40	

US Treasuries vs German Futures

	2y	3y	5y	7y	10y	30y
Bund (U)	1.5	2.3	3.6	4.7	Jan-00	12.9
Bobl (U)	2.7	3.9	6.3	8.0	Jan-00	22.3
Shatz (U)	6.8	9.9	16.1	19.7	Jan-00	56.9

Note: If you are looking at a matrix with Eurex products then those ratios are pulled from Bloomberg and are static. Meaning, I only update them once in a while but always on rolls. I calculate the other matrixes, with US products, everyday

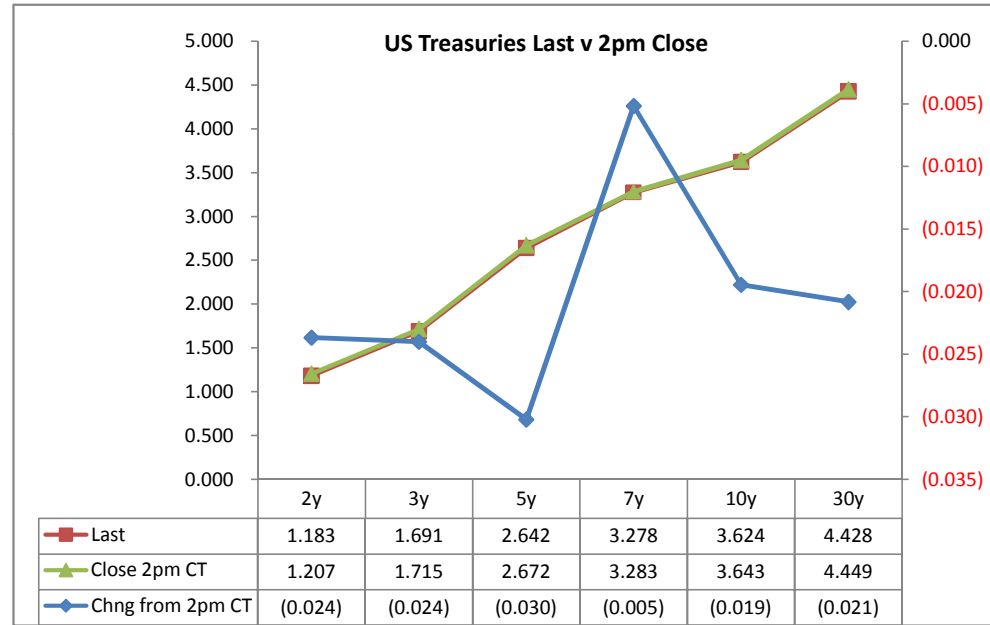
Treasury Closes: 2pm CT vs this Morning

	Cpn	Mty	Close 32	Close	Last	Chng	Basis (CF)			Close 32	Last	
						from 2pm	Close	Last	CF			
2y	1.000	7/31/11	99.1925	1.207	1.183	(0.024)	24.16	23.99	0.9144	108.032	108.042	TUAU9
3y	1.500	7/15/12	99.1250	1.715	1.691	(0.024)	28.85	27.76	0.8843	111.120	111.155	Z3NU9
5y	2.625	7/31/14	99.2500	2.672	2.642	(0.030)	35.64	36.27	0.8602	114.225	114.270	FVAU9
7y	3.250	7/31/16	99.2550	3.283	3.278	(0.005)	na	na	na	na	na	
10y	3.125	5/15/19	95.2500	3.643	3.624	(0.019)	112.54	110.08	0.7941	116.060	116.135	TYAU9
30y	4.250	5/15/39	96.2350	4.449	4.428	(0.021)	251.16	255.23	0.7593	117.020	117.085	USAU9

Curve Spreads^

	Close bps	Last bps	Chng from
			2pm Cls
2/3	50.8	50.8	(0.0)
2/5	146.5	145.8	(0.7)
2/7	207.6	209.5	1.9
3/5	95.7	95.1	(0.6)
3/7	156.8	158.7	1.9
2/10	243.6	244.0	0.4
3/10	192.8	193.3	0.5
5/7	61.1	63.6	2.5
5/10	97.1	98.2	1.1
2/30	324.2	324.5	0.3
3/30	273.4	273.7	0.3
5/30	177.7	178.6	0.9
7/10	36.0	34.6	(1.4)
7/30	116.6	115.0	(1.6)
10/30	80.6	80.5	(0.1)

	Last	Chng on Day	Prcnt Chng
Emini SP	986.75	4.50	0.46
Crude Oil	66.78	(0.16)	-0.24
Gold	938.10	3.20	0.34
EURUSD	141.22	0.46	0.33
USDJPY	95.64	0.07	0.07
DX	79.05	(0.24)	-0.30



^matrix is linked to 'Monitor'

What is this? (1):
 2yr cash has X% duration of 5yr cash.

Cash Duration Matrix

	2	5	10	30
2	100%			
5	42%	100%		
10	24%	56%	100%	
30	12%	28%	50%	100%

What is this? (2):
 - 2yr cash has DV01 of X\$.
 - Multiply the 2yr DV01 by the percent duration to come up with what the 2yrs DV01 SHOULD be compared to the 5yr.

Cash Matrix [DV01 x Duration]

	2	5	10	30
2	\$199			
5	\$205	\$486		
10	\$199	\$471	\$837	
30	\$205	\$484	\$860	\$1,712

What is this? (3):
 - Now you can see the over/under value, based on the DV01, from contract to contract. In this example we are looking at the 2yr compared to the 5yr.

Cash Matrix [DV01 over / (under) valued]

	2	5	10	30
2	\$199			
5	(\$6)	\$486		
10	\$0	\$15	\$837	
30	(\$6)	\$2	(\$23)	\$1,712

Or you can look at the over/under value as a percentage instead of dollar terms.

Cash Matrix [DV01 over / (under) as %]

	2	5	10	30
2	0.0%			
5	-3.1%	0.0%		
10	0.0%	3.2%	0.0%	
30	-2.7%	0.4%	-2.7%	0.0%

Tic for Tic Matrix

	2y	5y	10y	30y
ZT	0.93	2.26	3.89	7.96
ZF	0.41	0.99	1.71	3.50
ZN	0.27	0.67	1.15	2.36
ZB	0.16	0.38	0.65	1.34

	2y	5y	10y	30y
2y		2.44	4.20	8.60
5y	0.41		1.72	3.52
10y	0.24	0.58		2.05
30y	0.12	0.28	0.49	

	ZT	ZF	ZN	ZB
ZT		2.28	3.37	5.95
ZF	0.44		1.48	2.61
ZN	0.30	0.67		1.76
ZB	0.17	0.38	0.57	

Box for Box Matrix

	2y	5y	10y	30y
ZT	0.93	2.26	7.78	15.92
ZF	0.41	0.99	3.42	6.99
ZN	0.55	1.34	1.15	2.36
ZB	0.62	0.76	1.31	1.34

	2y	5y	10y	30y
2y		2.44	2.10	4.30
5y	0.41		0.43	1.76
10y	0.48	2.32		2.05
30y	0.23	0.57	0.49	

	ZT	ZF	ZN	ZB
ZT		2.28	6.75	11.90
ZF	0.44		2.96	5.23
ZN	0.15	0.34		1.76
ZB	0.08	0.19	0.57	

	Libor\$ ¹	Repo Rt ⁶
0/N	0.235	#VALUE!
1week	0.259	#VALUE!
2week	0.270	#VALUE!

	Libor\$ ¹	Tbill	CP ²
1M	0.279	0.119	0.300
3M	0.479	0.180	0.400
6M	0.925	0.243	0.850

	TSY	Swp	Swp Rate ⁵	ED Pks ³	TSY-ED Pk ⁴
2y	1.183	36.75	1.55	2.498	1.315
5y	2.642	37.00	3.01	4.372	1.730
10y	3.624	24.50	3.87	#VALUE!	#VALUE!

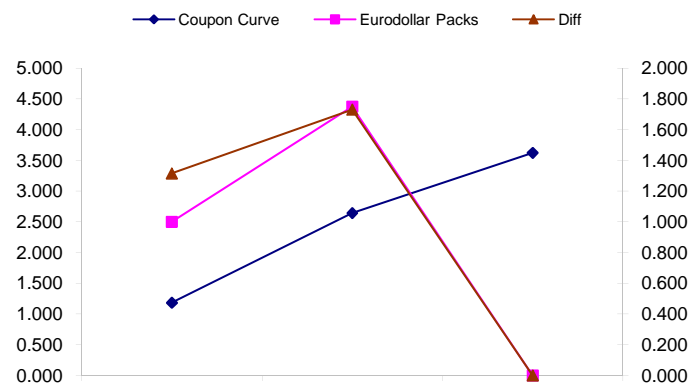
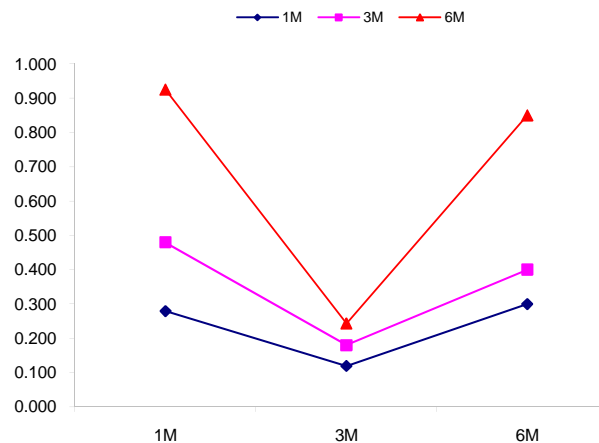
<u>2/5</u>	<u>Rd/Blu Pk</u>	<u>Diff</u>
145.8	187.4	41.5
<u>2/10</u>	<u>Rd/Gld Pk</u>	<u>Diff</u>
244.0	#VALUE!	#VALUE!
<u>5/10</u>	<u>Blu/Gld Pk</u>	<u>Diff</u>
98.2	#VALUE!	#VALUE!

Red pack / Blue pack is a 2/5 proxy
 Red pack / Gold pack is a 2/10 proxy
 Blue pack / Gold pack is a 5/10 proxy

"Swap spreads are essentially a measure of the difference between buying a safe government bond and making a riskier loan to a bank"
 --WSJ

Notes:

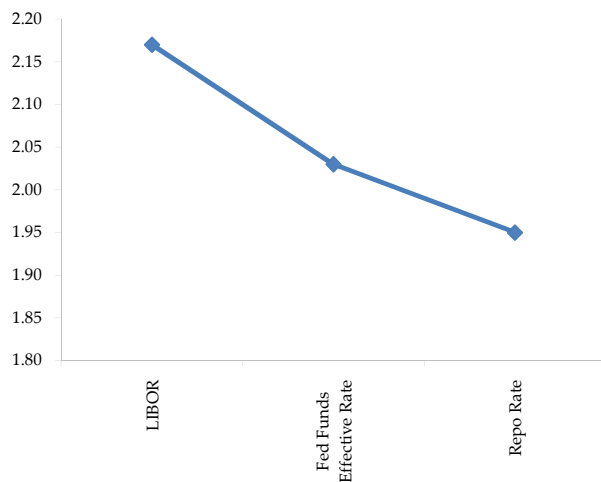
- 1) Quoted in US Dollars
- 2) CP = Commercial Paper
- 3) ED Pks are colored for pack identifications. Example, the red pack is a 2-yr proxy and is colored red.
- 4) TSY yield minus ED Pk yield
- 5) Swap divided by 100 + TSY yield gives swap rate in basis points.
- 6) Repo Rt quotes is for overnight General Collateral



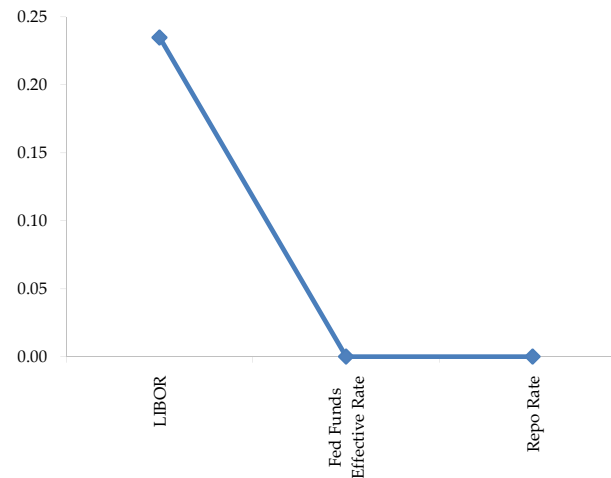
	Last	Chng	Term	Asset Type
USDLIBON	0.235	0.0050	Overnight	LIBOR
TUSFFRON	#VALUE!	#VALUE!	Overnight	Fed Funds Effective Rate
TUSRPOON	#VALUE!	#VALUE!	Overnight	Repo Rate
TEONIA01M	0.394	0.0040	1 month	Euribor OIS Rate
TEONIA03M	0.446	(0.0010)	3 month	Euribor OIS Rate
TSONIA01M	0.422	0.0030	1 month	Sterling OIS Rate
TSONIA03M	0.427	0.0030	3 month	Sterling OIS Rate
TUSOIS01M	0.187	0.0000	1 month	USD OIS Rate
TUSOIS03M	0.198	(0.0020)	3 month	USD OIS Rate

Example, below

Overnight Rates -EXAMPLE



Overnight Rates



A 'normal' lending curve looks like the chart to the left. That is, the Libor should be a bit higher than Fed Funds Effective rate (FFER), and the FFER should be a bit higher than the Repo Rate.

The best time to view this page is to request that I take a snapshot during the day and send it to you personally.

The Fed Funds effective rate and the repo rate rarely update until after I send the morning email.

Jim's Notes:

The US Dollar Index is physically settled on the third Wednesday of the expiration month against six component currencies (euro, Japanese yen, British pound, Canadian dollar, Swedish krona and Swiss franc) in their respective percentage weights in the Index. Settlement rates may be quoted to three decimal places. [ICE]

