

**The Morning Email: Commitment of Traders (CoT) & Dealer Positions (DP)**

**Table of Contents**

- Pg 1** NYMEX: Energy Complex
- Pg 2** CME: Treasury Futures
- Pg 3** CME: Eurodollars
- Pg 4** Dealers: Total Securities Owned - GSE and Govs
- Pg 5** Dealers: Treasury Coupon Positions by Maturity
- Pg 6** Dealers: Total Corporate & Mortgage-backed Securites Owned
- Pg 7** CIT Positions

Want something added? Let me know: [jgoulding@ghco.com](mailto:jgoulding@ghco.com)

**Disclaimer:** All information within this newsletter is meant for internal use at GH Trader's LLC, only. All information has been recorded to the best of my ability. This material is based upon information that I consider reliable, but I do not represent that it is accurate or complete.

	Current Positions									
	Small Spec			Large Spec			Commercials (Hedgers)			
	Long	Short	Net	Long	Short	Net	Long	Short	Net	
Crude Oil ^	145,967	127,589	18,378	206,326	88,332	117,994	1,325,292	1,461,664	(136,372)	Crude Oil
Heating Oil	49,554	30,537	19,017	39,848	13,329	26,519	169,079	214,616	(45,537)	Heating Oil
Unleaded Gas	24,396	19,391	5,005	73,543	10,543	63,000	125,013	193,017	(68,004)	Unleaded Gas
Natural Gas	97,985	49,426	48,559	154,417	226,389	(71,972)	352,533	329,120	23,413	Natural Gas
^ Light Sweet										
	Week over Week Change									
As of				Sml Spec	Lrg Spec	Comm				
6/9/2009				Net	Net	Net				
				Crude Oil	3,879	97,056	(100,934)			
				Heating Oil	15,215	(34,859)	19,643			
				Unleaded Gas	(41,175)	132,684	(91,508)			
				Natural Gas	30,181	(189,966)	159,785			

Current Positions										
	Small Spec			Large Spec			Commercials (Hedgers)			
	Long	Short	Net	Long	Short	Net	Long	Short	Net	
ZF	168,756	220,211	(51,455)	104,480	98,683	5,797	513,288	467,631	45,657	ZF
ZN	284,421	289,637	(5,216)	72,858	165,104	(92,246)	930,457	832,994	97,463	ZN
ZB	122,343	137,744	(15,401)	72,877	156,385	(83,508)	544,206	445,301	98,905	ZB

Week over Week Change					
As of		Sml Spec	Lrg Spec	Comm	
6/9/2009		Net	Net	Net	
ZF		14,320	10,971	(25,292)	
ZN		9,334	34,942	(44,274)	
ZB		22,704	(817)	(21,891)	

Current Positions								
Small Spec			Large Spec			Commercials		
Long	Short	Net	Long	Short	Net	Long	Short	Net
1,037,538	1,009,405	28,133	631,435	257,094	374,341	6,761,481	7,163,955	(402,474)

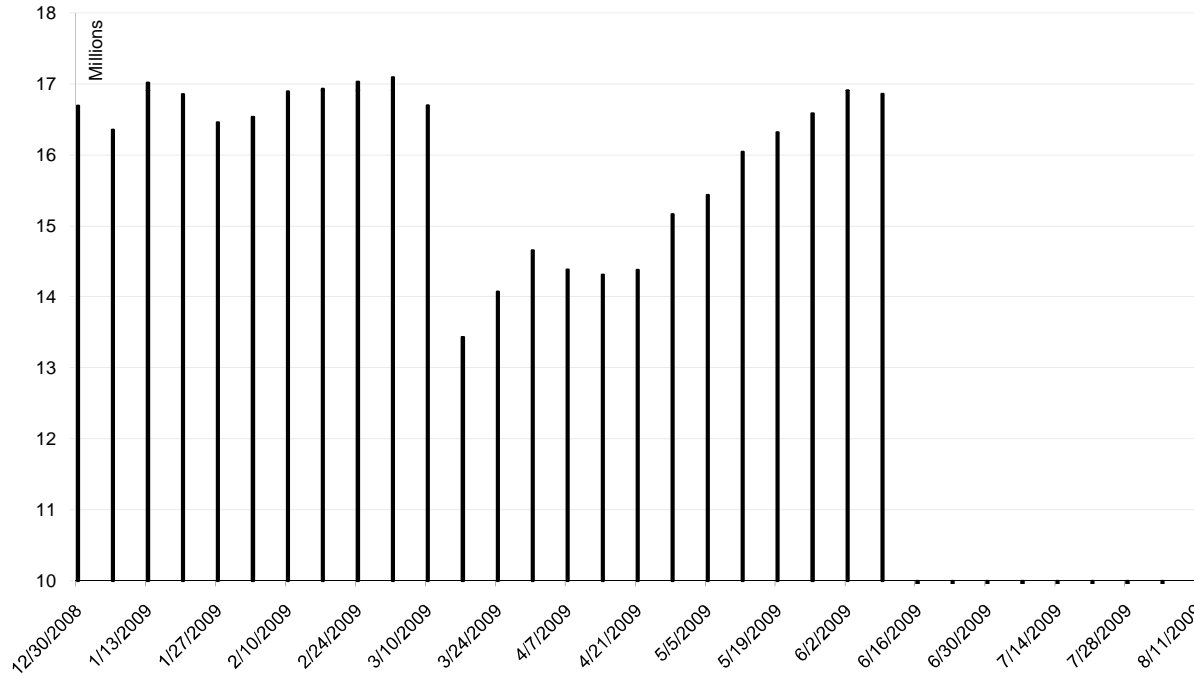
As of

6/9/2009

Week over Week Change

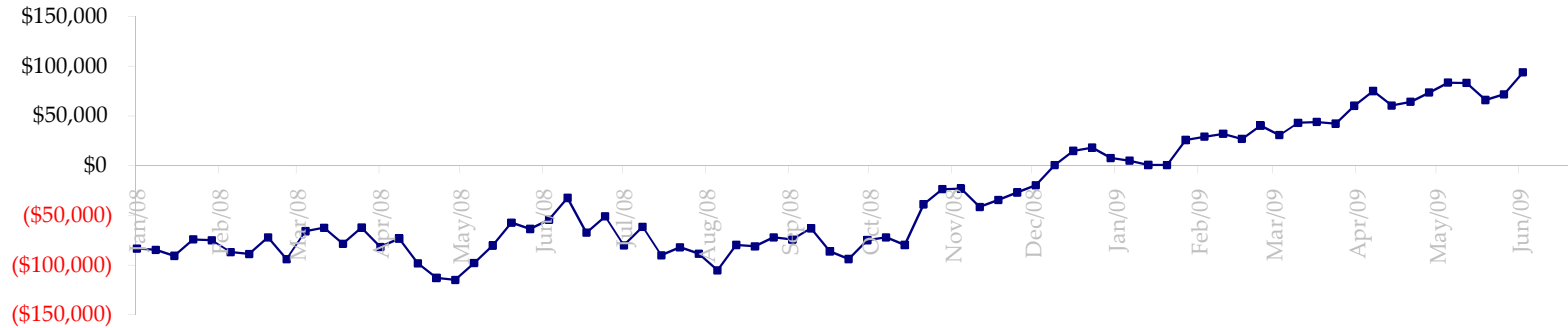
Sm Spec	Lg Spec	Commrc
(133,285)	(277,606)	410,891

ED Total Open Interest

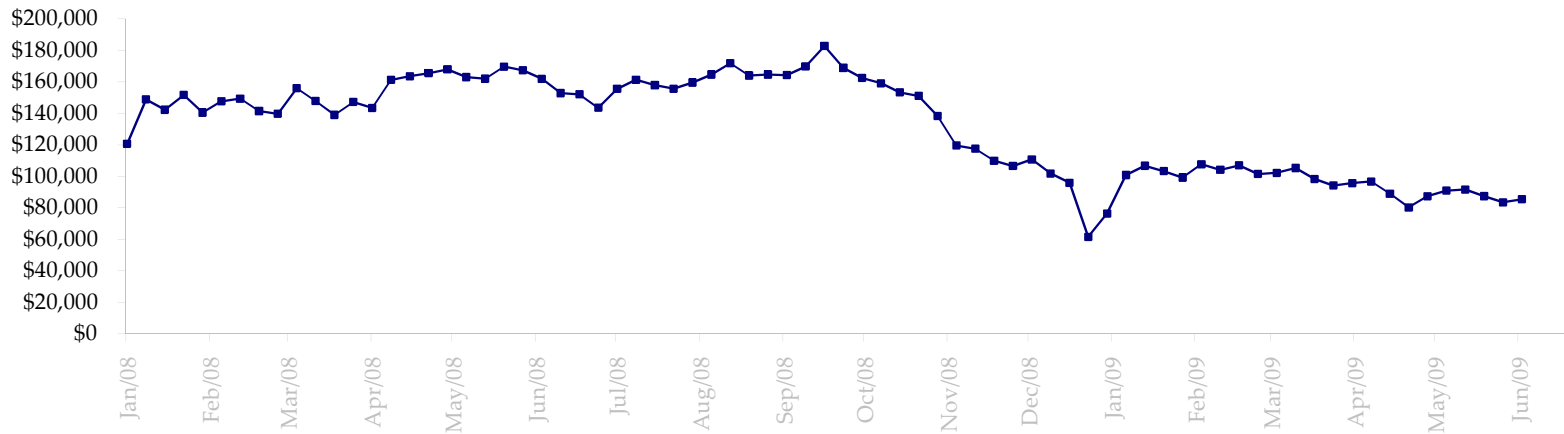


Date	Total O.I.
12/30/2008	16,692,040
1/6/2009	16,353,766
1/13/2009	17,017,481
1/20/2009	16,856,304
1/27/2009	16,457,134
2/3/2009	16,535,902
2/10/2009	16,891,000
2/17/2009	16,931,894
2/24/2009	17,032,099
3/3/2009	17,094,554
3/10/2009	16,698,308
3/17/2009	13,434,827
3/24/2009	14,073,250
3/31/2009	14,657,253
4/7/2009	14,384,480
4/14/2009	14,314,271
4/21/2009	14,383,122
4/28/2009	15,165,072
5/5/2009	15,434,647
5/12/2009	16,042,275
5/19/2009	16,320,053
5/26/2009	16,585,652
6/2/2009	16,909,646
6/9/2009	16,860,908
6/16/2009	0
6/23/2009	0
6/30/2009	0
7/7/2009	0
7/14/2009	0
7/21/2009	0
7/28/2009	0
8/4/2009	0
8/11/2009	0

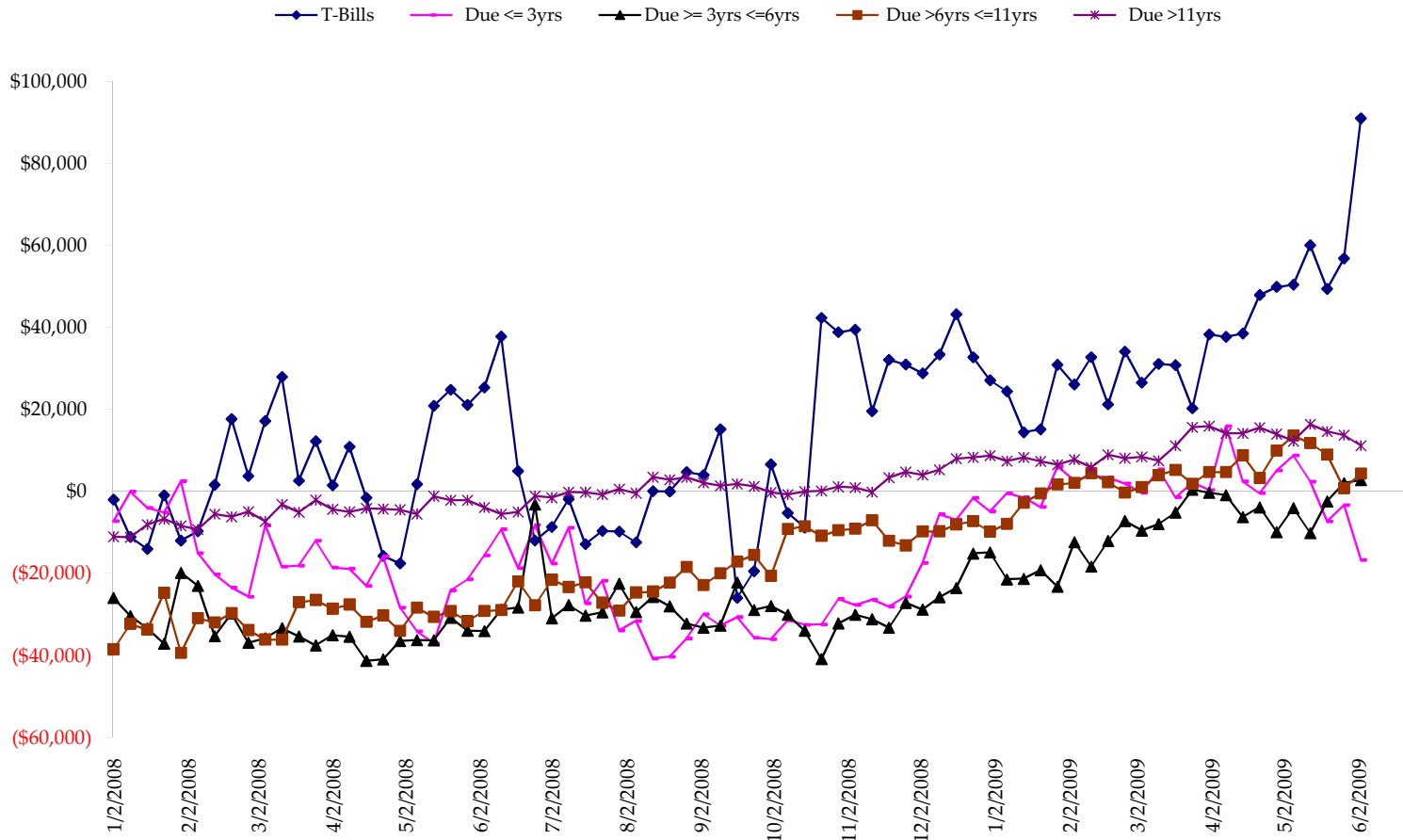
Total US Government Total Securities: Coupons - (\$mln)



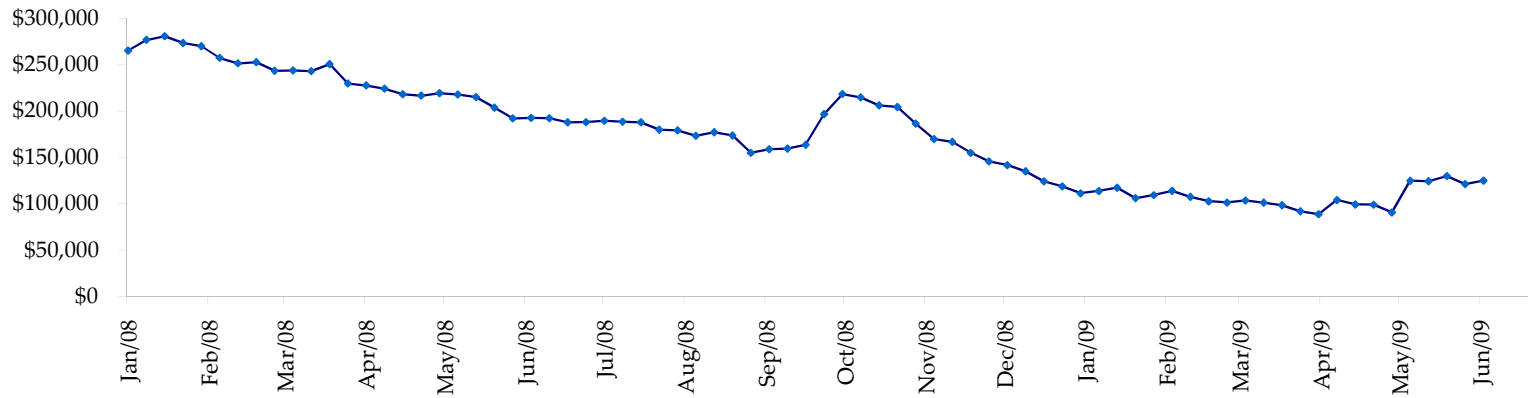
Fed Agency & GSE Total Securities: Coupons - (\$mln)



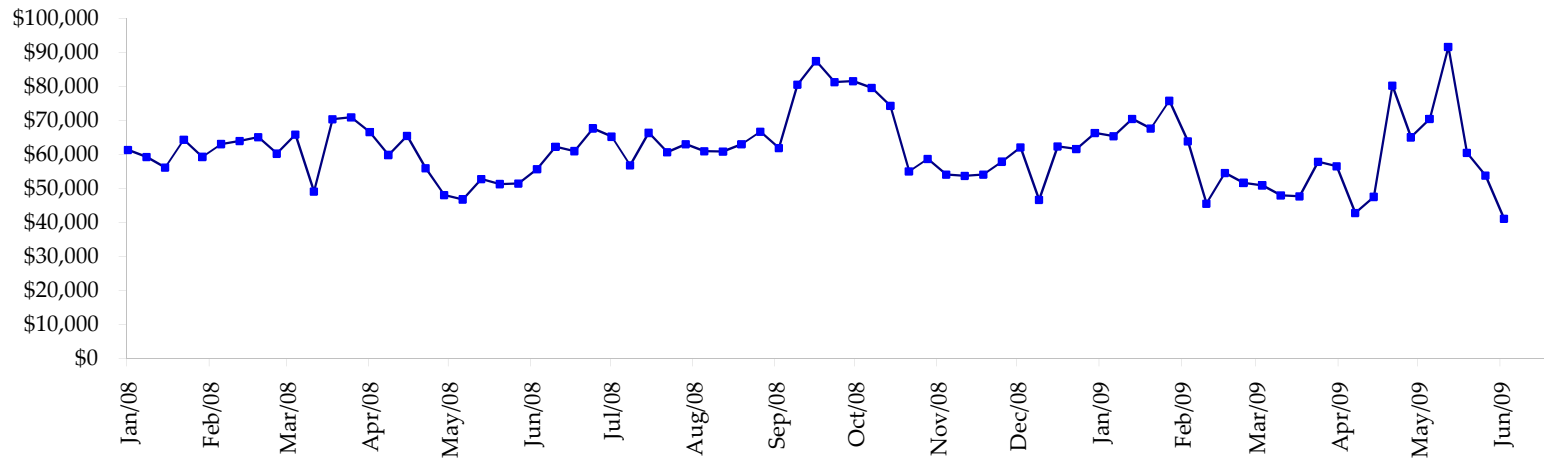
All dates are 'as of'.



Total Corporate Securities - (\$mln)



Total Mortgage Position - (\$mln)



We are interested in the last column, CIT % OI. That stands for Commercial Index Traders, percent Open Interest.

This table, compliments of CommitmentofTraders.com

**Supplemental Commitments of Traders Report breaking out the Commercial Index Traders (CIT).**  
**Analysis of open interest -with option deltas- as of 06/09/2009**  
**Summary prepared by www.Commitments of Traders .com**

Commodity	Small Sp			Large Sp			Commerc			CIT			Total	CIT
	NonRepo	Short	Net	Non Com	Short	Net	Comm	Short	Net	Long	Short	Net		
Wheat	41018	51519	-10501	52855	67587	-14732	65346	182788	-117442	164012	21338	142674	450856	31%
K C Wheat	23249	25808	-2559	13405	5203	8202	24373	54902	-30529	26854	1967	24887	104105	23%
Corn	142572	253918	-111346	206098	73535	132563	300380	611443	-311063	337510	47664	289846	1412631	20%
Soybeans	72908	92467	-19559	113574	20726	92848	110554	315420	-204866	149523	17946	131577	660051	19%
Soybean Oil	34936	22274	12662	42107	35184	6923	82068	156073	-74005	58675	4255	54420	300556	18%
Cotton	16650	9975	6675	26644	5274	21370	37913	125699	-87786	63194	3453	59741	197308	30%
Lean Hogs	22787	26275	-3488	17297	39079	-21782	17050	42336	-25286	55028	4473	50555	178155	28%
Lv Cattle	26464	44721	-18257	41996	58140	-16144	46227	100230	-54003	88966	561	88405	253375	34%
Feeder	5915	9461	-3546	4287	4275	12	2779	5776	-2997	6713	181	6532	24166	27%
Cocoa	10258	4098	6160	36885	20835	16050	53169	91714	-38545	17567	1232	16335	130203	12%
Sugar No 11	92133	50491	41642	136661	24103	112558	318115	663483	-347368	267878	74710	193168	1089185	17%
Coffee	11673	9083	2590	36916	7527	29389	39523	106941	-67418	39136	3697	35439	178670	19%
			-99527			367257			-1361308			1093579	4979261	21%

← Most Current Date

**Supplemental Commitments of Traders Report breaking out the Commercial Index Traders (CIT).**  
**Analysis of open interest -with option deltas- as of 06/02/2009**  
**Summary prepared by www.Commitments of Traders .com**

Commodity	Small Sp			Large Sp			Commerc			CIT			Total	CIT
	NonRepo	Short	Net	Non Com	Short	Net	Comm	Short	Net	Long	Short	Net		
Wheat	33516	48742	-15226	64924	71717	-6793	67233	188044	-120811	165414	22583	142831	460079	31%
K C Wheat	19502	22977	-3475	15530	5983	9547	21460	52547	-31087	26219	1205	25014	95055	26%
Corn	149039	253762	-104723	209619	82991	126628	298927	611001	-312074	335352	45184	290168	1412608	20%
Soybeans	66847	87360	-20513	108638	19754	88884	103209	302484	-199275	150276	19372	130904	642081	20%
Soybean Oil	36101	21249	14852	41620	31676	9944	75494	156012	-80518	59604	3881	55723	285220	19%
Cotton	17806	7653	10153	30913	4205	26708	35459	132249	-96790	63274	3347	59927	201736	29%
Lean Hogs	22821	26280	-3459	19465	41068	-21603	18119	44240	-26121	57792	6609	51183	179879	28%
Lv Cattle	28427	45647	-17220	39494	55969	-16475	46141	99735	-53594	89322	2033	87289	260805	33%
Feeder	5392	9989	-4597	4540	1587	2953	2897	8522	-5625	7455	187	7268	24621	29%
Cocoa	8930	4689	4241	28880	18916	9964	58945	89585	-30640	17742	1307	16435	132115	12%
Sugar No 11	97390	56135	41255	141288	19167	122121	289322	653739	-364417	274338	73299	201039	1078305	18%
Coffee	12367	9349	3018	41874	9851	32023	40062	110999	-70937	39975	4081	35894	193057	18%
			-95694			383901			-1391889			1103675	4965561	22%

← Prior Week's Date