



The Morning Email: Treasuries

6/26/2009 5:40

Table of Contents

- Pg 1** Auctions

- Pg 2** Quotes

- Pg 3** Duration, DV01s, CFs

- Pg 4** Hedge Ratio's

- Pg 5** Treasury Closes: 2pm CT vs this Morning

- Pg 6** Cash Duration Matrix

- Pg 7** Tic for Tic & Box for Box Matrix

- Pg 8** Key Money Rate, Spreads, Swaps, Packs

- Pg 9** Libor, Fed Funds (OIS), Repo, SONIA & EONIA Rates

Want something added? Let me know:
jgoulding@ghco.com

Disclaimer: All information within this newsletter is meant for internal use at GH Trader's LLC, only. All information has been recorded to the best of my ability. This material is based upon information that I consider reliable, but I do not represent that it is accurate or complete.

	32nds					
	2 y	3 y	5y	7y	10y	30y
Auction Price	99.304	99.241	99.208	99.163	99.143	99.116
Auction Yield Stop	0.940	1.375	2.310	3.300	3.990	4.288
Actual Auction Date	6/23/2009	6/9/2009	6/24/2009	6/26/2009	06/11/09 r	6/11/2009 r

		32 nds					
	Last	Net	High	Low	Open	Volume	Sym Name
TUAU9	108.0120	(0.7)	108.0220	108.0000	108.0220	17,780	2y Fut
Z3NU9	111.0800	(2.2)	111.0800	111.0800	111.0800	15	3y Fut
FVAU9	114.1600	(3.0)	114.2020	114.1220	114.2020	26,801	5y Fut
TYAU9	116.0050	(6.00)	116.0850	115.2650	116.0750	81,511	10y Fut
USAU9	117.3000	(2.00)	118.0350	117.1950	118.0300	11,311	30y Fut
	Last	Net	High	Low	Open	Volume	Sym Name
BUS02P	99.3170	0.00	100.0070	99.3050	99.3170	na	2y Cash
BUS03P	100.1870	(1.50)	100.2050	100.1650	100.2050	na	3y Cash
BUS05P	100.0170	(2.70)	100.0570	99.3050	100.0400	na	5y Cash
BUS07P	99.3000	(11.00)	100.0200	99.2600	100.0700	na	7y Cash
BUS10P	96.1050	(6.50)	96.1950	96.0250	96.1700	na	10y Cash
BUS30P	98.1400	(5.00)	98.1400	98.0150	98.1750	na	30y Cash
	Last	Net	High	Low	Open	Volume	Sym Name
BUS02Y	1.121	0.040	1.149	1.113	1.130	na	2y Yield
BUS03Y	1.668	0.260	1.695	1.652	1.658	na	3y Yield
BUS05Y	2.610	0.230	2.635	2.586	2.598	na	5y Yield
BUS07Y	3.255	0.630	3.280	3.240	3.240	na	7y Yield
BUS10Y	3.569	0.290	3.600	3.534	3.544	na	10y Yield
BUS30Y	4.344	0.100	4.367	4.344	4.337	na	30y Yield

Notes:

Regarding the futures quotes: .2 .5 & .7
represent 1/4, 1/2, & 3/4s.

	M Duration	DV01 32	DV01 \$	DV01 Box	CF	
30y	16.64	5.59	\$1,748	11.19	n/a	30y
10y	8.36	2.71	\$848	5.43	n/a	10y
7y	6.12	2.06	\$644	4.12	n/a	7y
5y	4.60	1.54	\$480	6.15	n/a	5y
3y	2.87	0.95	\$297	3.80	n/a	3y
2y	1.96	0.64	\$200	2.56	n/a	2y
ZB	10.02	4.16	\$130	4.16	0.7593	ZB
ZN	5.82	2.35	\$74	4.70	0.7941	ZN
ZF	4.20	1.60	\$50	6.39	0.8622	ZF
Z3N	2.75	1.06	\$33	4.25	0.7941	Z3N
ZT	1.88	0.71	\$22	2.83	0.9201	ZT

DV01 32, said differently, is "how many TICS are in a basis point?".

Example, If **ZN** moves 1-basis point, then, it's moved 2.47 tics (Today, 04/28/09, the value in the box is 2.47).

Since ZN trades in half tics, then, 4.95 boxes = 1 basis point in ZN. (Again, today, 04/28/09, the value in the box is 4.95). Of course the values will be different as you look at this. But, they won't be that much different. So, I think you can get the idea I'm trying to get across.

Notes

CF = Conversion Factor

MDuration = Modified Macaulay Duration

MDuration & DV01s for Futures are based on proxy issue (CTD)

DV01 Box = Dollar Value of 1 basis point move per Box

US Financial Futures

	ZB	ZN	ZF	Z3N	ZT
ZB		1.77	2.60	1.96	2.94
ZN	0.57		1.47	1.11	1.67
ZF	0.38	0.68		0.75	1.13
Z3N	0.51	0.90	1.33		1.50
ZT	0.34	0.60	0.88	1.33	

US Treasuries vs US Financial Futures

	2y	3y	5y	7y	10y	30y
ZB	1.5	2.3	3.7	5.0	6.52	13.5
ZN	2.7	4.0	6.5	8.8	11.53	23.8
ZF	4.0	5.9	9.6	12.9	16.97	35.0
Z3N	3.0	4.5	7.2	9.7	12.77	26.3
ZT	4.5	6.7	10.9	14.6	19.20	39.6

US Treasuries

	2y	3y	5y	7y	10y	30y
2y		1.49	2.40	3.22	4.24	8.75
3y	0.67		1.62	2.17	2.85	5.89
5y	0.42	0.62		1.34	1.76	3.64
7y	0.31	0.46	0.75		1.32	2.72
10y	0.24	0.35	0.57	0.76		2.06
30y	0.11	0.17	0.27	0.37	0.48	

US Financial Futures vs German Futures

	ZB	ZN	ZF	ZT
Bund (U)	1.00	1.80	2.55	2.88
Bobl (U)	0.62	1.00	1.50	1.69
Shatz (U)	0.25	0.43	0.60	0.68

German Futrues vs German Futures

	Bund (U)	Bobl (U)	Shatz (U)
Bund (U)		1.70	4.21
Bobl (U)	0.59		2.47
Shatz (U)	0.24	0.40	

US Treasuries vs German Futures

	2y	3y	5y	7y	10y	30y
Bund (U)	1.5	2.4	3.7	4.7	6.4	12.6
Bobl (U)	2.6	3.9	6.2	8.0	10.9	21.5
Shatz (U)	6.5	9.5	15.4	19.7	26.8	52.9

Note: If you are looking at a matrix with Eurex products then those ratios are pulled from Bloomberg and are static. Meaning, I only update them once in a while but always on rolls. I calculate the other matrixes, with US products, everyday

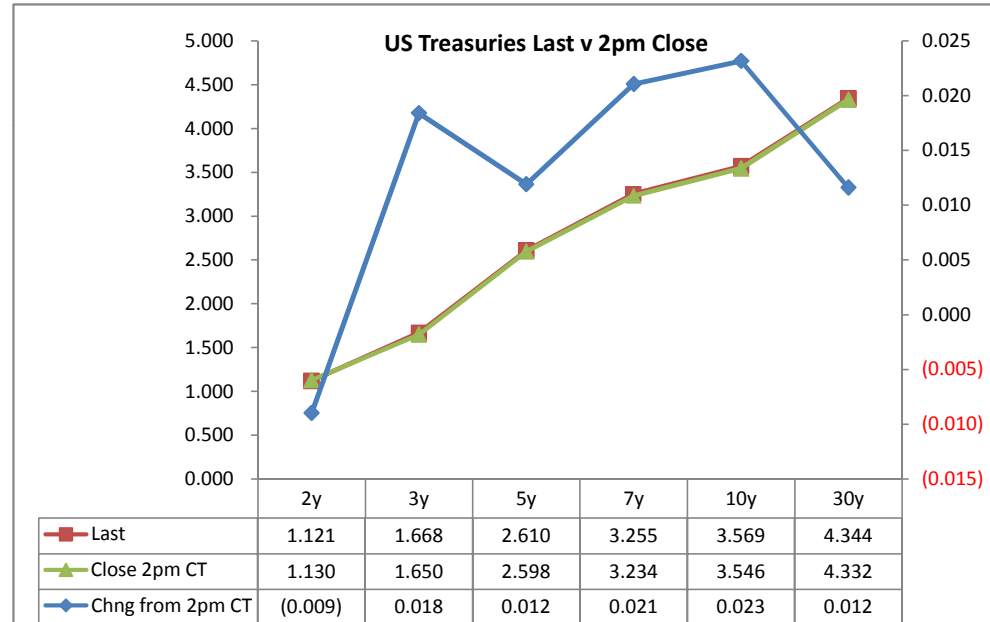
Treasury Closes: 2pm CT vs this Morning

	Cpn	Mty	Close 32	Close	Last	Chng	Basis (CF)		Close 32	Last	
						from 2pm	Close	Last			
2y	2.625	6/30/14	100.0000	1.130	1.121	(0.009)	18.29	18.73	108.0200	108.012	TUAU9
3y	1.875	6/15/12	100.2075	1.650	1.668	0.018	25.90	26.09	111.1050	111.080	Z3NU9
5y	2.250	5/31/14	100.0400	2.598	2.610	0.012	42.31	42.60	114.1900	114.160	FVAU9
7y	3.250	6/30/16	100.0325	3.234	3.255	0.021					
10y	3.125	5/15/19	96.1650	3.546	3.569	0.023	135.64	134.40	116.0650	116.005	TYAU9
30y	4.250	5/15/39	98.2000	4.332	4.344	0.012	288.50	284.40	118.0050	117.3	USAU9

Curve Spreads^

	Close bps	Last bps	Chng from
			2pm Cls
2/3	52.0	54.7	2.7
2/5	146.8	148.9	2.1
2/7	210.4	213.4	3.0
3/5	94.8	94.1	(0.7)
3/7	158.4	158.7	0.3
2/10	241.6	244.8	3.2
3/10	189.6	190.1	0.5
5/7	63.6	64.5	0.9
5/10	94.8	95.9	1.1
2/30	320.2	322.3	2.1
3/30	268.2	267.5	(0.7)
5/30	173.4	173.4	(0.0)
7/10	31.2	31.4	0.2
7/30	109.8	108.9	(0.9)
10/30	78.6	77.4	(1.2)

	Last	Chng on Day	Prcnt Chng
Emini SP	914.00	(2.50)	-0.27
Crude Oil	71.07	0.84	1.20
Gold	945.90	6.40	0.68
EURUSD	140.88	0.98	0.70
USDJPY	95.69	(0.27)	-0.28
DX	79.85	(0.56)	-0.69



^matrix is linked to 'Monitor'

Cash Duration Matrix

What is this? (1):
 2yr cash has X% duration of 5yr cash.

Cash Duration Matrix

	2	5	10	30
2	100%			
5	43%	100%		
10	23%	55%	100%	
30	12%	28%	50%	100%

What is this? (2):
 - 2yr cash has DV01 of X\$.
 - Multiply the 2yr DV01 by the percent duration to come up with what the 2yrs DV01 SHOULD be compared to the 5yr.

Cash Matrix [DV01 x Duration]

	2	5	10	30
2	\$200			
5	\$205	\$480		
10	\$199	\$466	\$848	
30	\$206	\$484	\$879	\$1,748

What is this? (3):
 - Now you can see the over/under value, based on the DV01, from contract to contract. In this example we are looking at the 2yr compared to the 5yr.

Cash Matrix [DV01 over / (under) valued]

	2	5	10	30
2	\$200			
5	(\$5)	\$480		
10	\$1	\$14	\$848	
30	(\$7)	(\$3)	(\$31)	\$1,748

Or you can look at the over/under value as a percentage instead of dollar terms.

Cash Matrix [DV01 over / (under) as %]

	2	5	10	30
2	0.0%			
5	-2.5%	0.0%		
10	0.4%	3.0%	0.0%	
30	-3.2%	-0.7%	-3.5%	0.0%

Tic for Tic Matrix

	2y	5y	10y	30y
ZT	0.91	2.18	3.84	7.92
ZF	0.40	0.96	1.70	3.50
ZN	0.27	0.65	1.15	2.38
ZB	0.15	0.37	0.65	1.35

	2y	5y	10y	30y
2y		2.40	4.24	8.75
5y	0.42		1.76	3.64
10y	0.24	0.57		2.06
30y	0.11	0.27	0.48	

	ZT	ZF	ZN	ZB
ZT		2.26	3.33	5.89
ZF	0.44		1.47	2.60
ZN	0.30	0.68		1.77
ZB	0.17	0.38	0.57	

Box for Box Matrix

	2y	5y	10y	30y
ZT	0.91	2.18	7.68	15.84
ZF	0.40	0.96	3.39	7.00
ZN	0.54	1.31	1.15	2.38
ZB	0.62	0.74	1.30	1.35

	2y	5y	10y	30y
2y		2.40	2.12	4.37
5y	0.42		0.44	1.82
10y	0.47	2.27		2.06
30y	0.23	0.55	0.48	

	ZT	ZF	ZN	ZB
ZT		2.26	6.66	11.77
ZF	0.44		2.94	5.20
ZN	0.15	0.34		1.77
ZB	0.08	0.19	0.57	

	Libor\$ ¹	Repo Rt ⁶
0/N	0.265	#VALUE!
1week	0.294	#VALUE!
2week	0.299	#VALUE!

	Libor\$ ¹	Tbill	CP ²
1M	0.310	0.048	0.300
3M	0.598	0.172	0.400
6M	1.095	0.291	0.850

	TSY	Swp	Swp Rate ⁵	ED Pks ³	TSY - ED Pk ⁴
2y	1.121	37.25	1.49	2.502	1.381
5y	2.610	38.50	2.99	4.459	1.849
10y	3.569	21.50	3.78	4.847	1.277

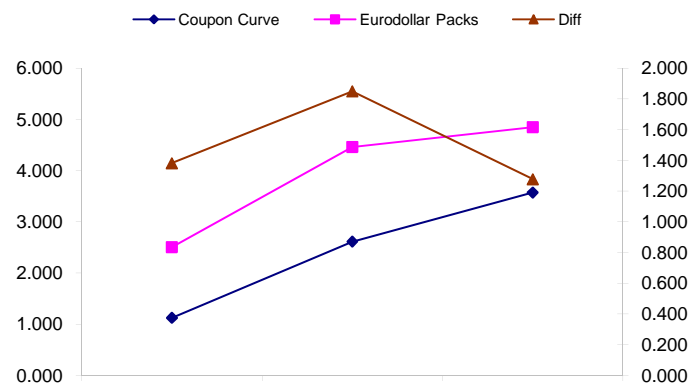
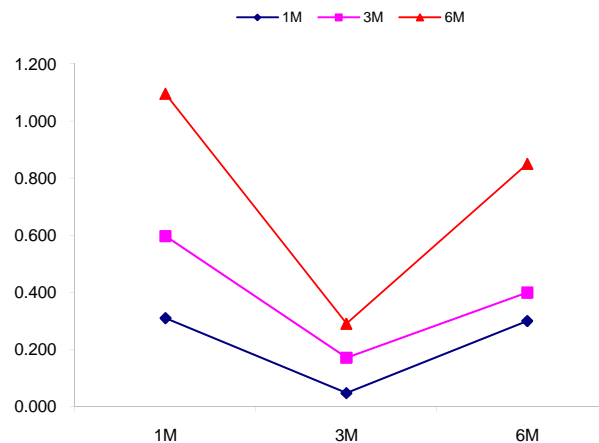
<u>2/5</u>	<u>Rd/Blu Pk</u>	<u>Diff</u>
148.9	195.7	46.8
<u>2/10</u>	<u>Rd/Gld Pk</u>	<u>Diff</u>
244.8	234.4	-10.4
<u>5/10</u>	<u>Blu/Gld Pk</u>	<u>Diff</u>
95.9	38.8	-57.2

Red pack / Blue pack is a 2/5 proxy
 Red pack / Gold pack is a 2/10 proxy
 Blue pack / Gold pack is a 5/10 proxy

"Swap spreads are essentially a measure of the difference between buying a safe government bond and making a riskier loan to a bank"
 --WSJ

Notes:

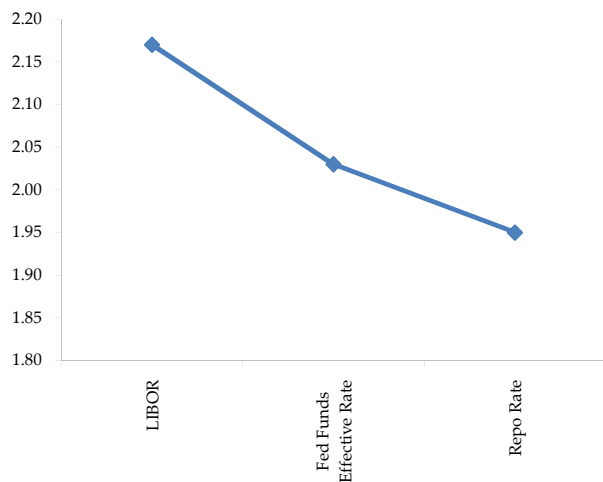
- 1) Quoted in US Dollars
- 2) CP = Commercial Paper
- 3) ED Pks are colored for pack identifications. Example, the red pack is a 2-yr proxy and is colored red.
- 4) TSY yield minus ED Pk yield
- 5) Swap divided by 100 + TSY yield gives swap rate in basis points.
- 6) Repo Rt quotes is for overnight General Collateral



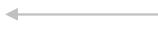
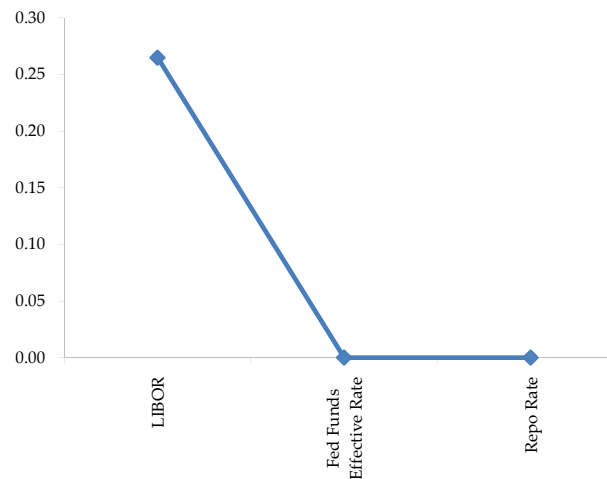
	Last	Chng	Term	Asset Type
USDLIBON	0.265	(0.0088)	Overnight	LIBOR
TUSFFRON	#VALUE!	#VALUE!	Overnight	Fed Funds Effective Rate
TUSRPOON	#VALUE!	#VALUE!	Overnight	Repo Rate
TEONIA01M	0.526	0.0110	1 month	Euribor OIS Rate
TEONIA03M	0.594	0.0140	3 month	Euribor OIS Rate
TSONIA01M	0.417	0.0050	1 month	Sterling OIS Rate
TSONIA03M	0.424	0.0090	3 month	Sterling OIS Rate
TUSOIS01M	0.204	0.0030	1 month	USD OIS Rate
TUSOIS03M	0.217	(0.0010)	3 month	USD OIS Rate

Example, below

Overnight Rates -EXAMPLE



Overnight Rates



A 'normal' lending curve looks like the chart to the left. That is, the Libor should be a bit higher than Fed Funds Effective rate (FFER), and the FFER should be a bit higher than the Repo Rate.

The best time to view this page is on the closing email I send in the afternoon. The Fed Funds effective rate and the repo rate rarely update until after I send the morning email.

