

The Morning Email: Commitment of Traders (CoT) & Dealer Positions (DP)

Table of Contents

- Pg 1** NYMEX: Energy Complex
- Pg 2** CME: Treasury Futures
- Pg 3** CME: Eurodollars
- Pg 4** Dealers: Total Securities Owned - GSE and Govs
- Pg 5** Dealers: Treasury Coupon Positions by Maturity
- Pg 6** Dealers: Total Corporate & Mortgage-backed Securites Owned
- Pg 7** CIT Positions

Want something added? Let me know: jgoulding@ghco.com

Disclaimer: All information within this newsletter is meant for internal use at GH Trader's LLC, only. All information has been recorded to the best of my ability. This material is based upon information that I consider reliable, but I do not represent that it is accurate or complete.

Current Positions										
	Small Spec			Large Spec			Commercials (Hedgers)			
	Long	Short	Net	Long	Short	Net	Long	Short	Net	
Crude Oil ^	72,142	83,024	(10,882)	250,867	140,232	110,635	1,506,863	1,606,616	(99,753)	Crude Oil
Heating Oil	38,935	32,677	6,258	31,326	22,671	8,655	170,738	185,652	(14,914)	Heating Oil
Unleaded Gas	19,394	16,311	3,083	50,311	8,663	41,648	119,768	164,499	(44,731)	Unleaded Gas
Natural Gas	84,490	44,598	39,892	145,603	177,990	(32,387)	370,705	378,209	(7,504)	Natural Gas
^ Light Sweet										
Week over Week Change										
As of	Sml Spec			Lrg Spec	Comm					
2/24/2009	Net			Net	Net					
Crude Oil	(15,687)			99,380	(83,693)					
Heating Oil	2,761			(37,944)	35,182					
Unleaded Gas	(36,406)			84,576	(48,170)					
Natural Gas	50,774			(143,022)	92,249					

Current Positions										
	Small Spec			Large Spec			Commercials (Hedgers)			
	Long	Short	Net	Long	Short	Net	Long	Short	Net	
ZF	77,349	104,854	(27,505)	106,646	104,711	1,935	675,767	650,197	25,570	ZF
ZN	160,840	199,318	(38,478)	104,751	121,699	(16,948)	731,909	676,482	55,427	ZN
ZB	123,052	168,440	(45,388)	35,360	127,273	(91,913)	594,821	457,519	137,302	ZB

Week over Week Change				
As of		Sml Spec	Lrg Spec	Comm
2/24/2009		Net	Net	Net
	ZF	(13,922)	25,360	(11,438)
	ZN	(24,465)	17,977	6,489
	ZB	(6)	(3,500)	3,506

Current Positions								
Small Spec			Large Spec			Commercials		
Long	Short	Net	Long	Short	Net	Long	Short	Net
949,078	863,617	85,461	534,463	373,873	160,590	7,032,509	7,278,559	(246,050)

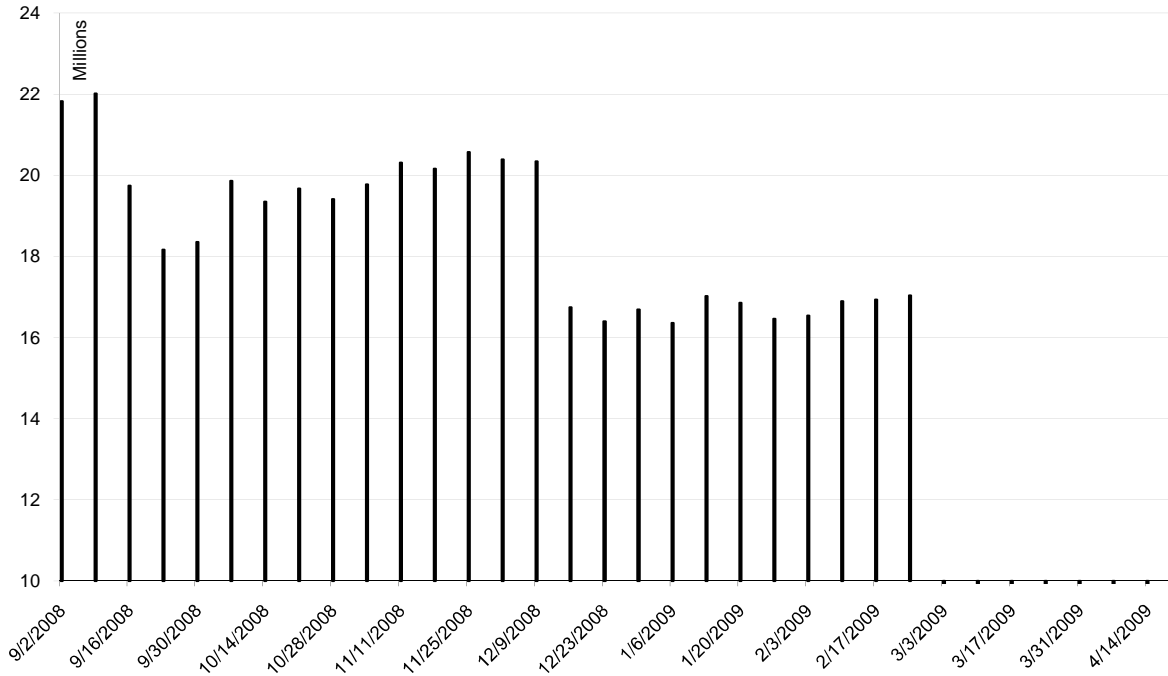
As of

2/24/2009

Week over Week Change

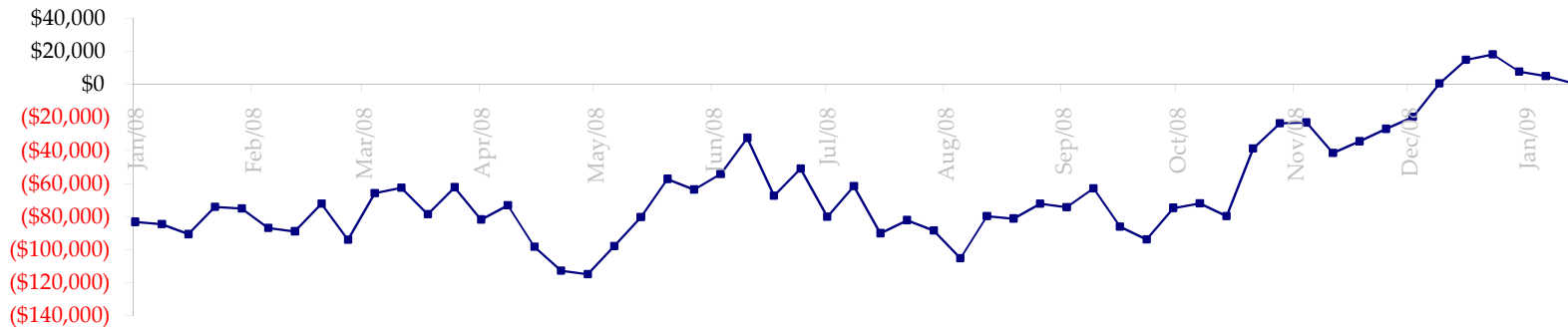
Sm Spec	Lg Spec	Commrc
(56,600)	13,867	42,734

ED Total Open Interest



Date	Total O.I.
9/2/2008	21,823,622
9/9/2008	22,016,222
9/16/2008	19,740,627
9/23/2008	18,162,093
9/30/2008	18,354,501
10/7/2008	19,858,978
10/14/2008	19,350,280
10/21/2008	19,668,213
10/28/2008	19,408,426
11/4/2008	19,775,814
11/11/2008	20,306,045
11/18/2008	20,161,877
11/25/2008	20,573,000
12/2/2008	20,389,053
12/9/2008	20,341,452
12/16/2008	16,746,217
12/23/2008	16,398,154
12/30/2008	16,692,040
1/6/2009	16,353,766
1/13/2009	17,017,481
1/20/2009	16,856,304
1/27/2009	16,457,134
2/3/2009	16,535,902
2/10/2009	16,891,000
2/17/2009	16,931,894
2/24/2009	17,032,099
3/3/2009	0
3/10/2009	0
3/17/2009	0
3/24/2009	0
3/31/2009	0
4/7/2009	0
4/14/2009	0
4/21/2009	0

Total US Government Total Securities: Coupons - (\$mln)

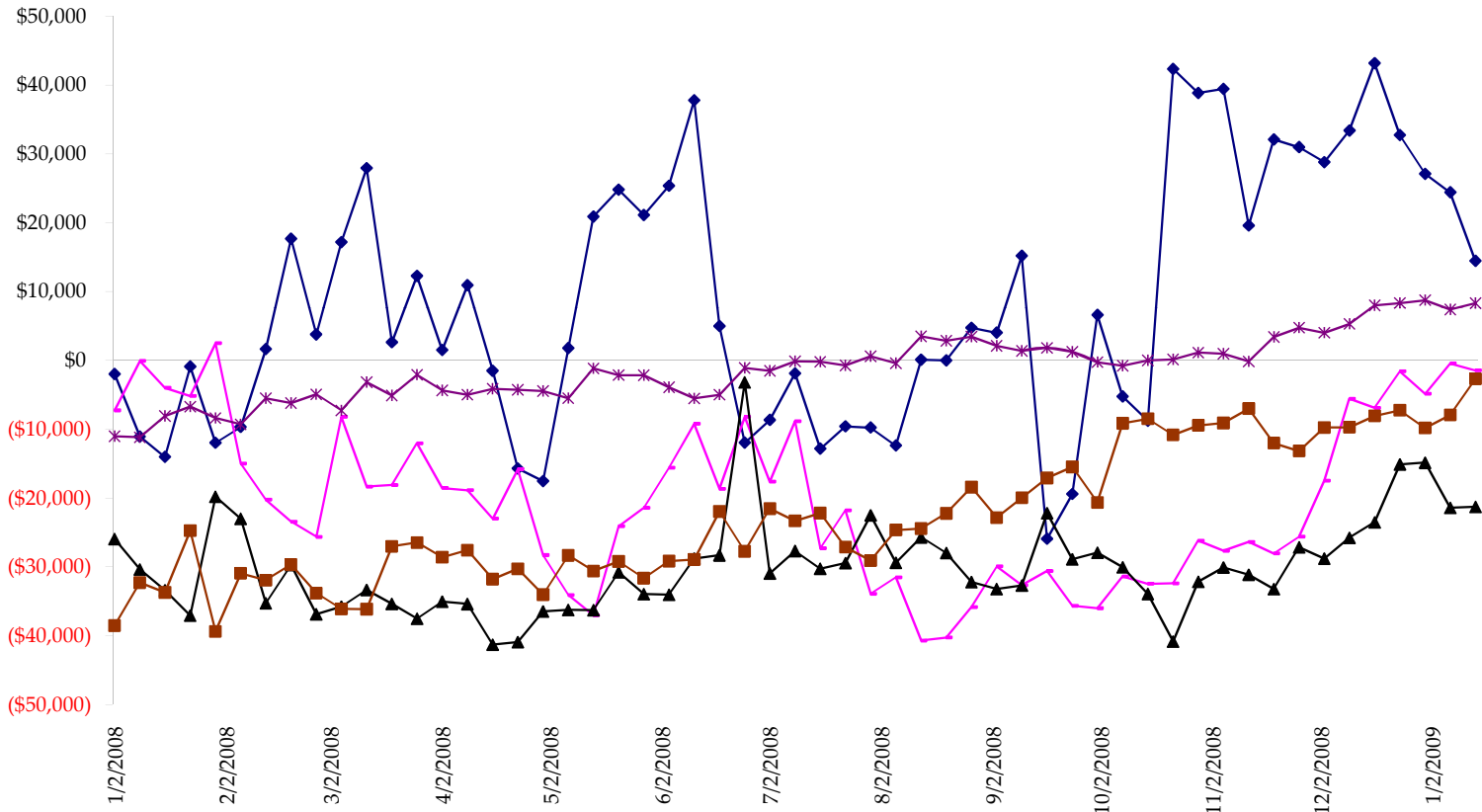


Fed Agency & GSE Total Securities: Coupons - (\$mln)

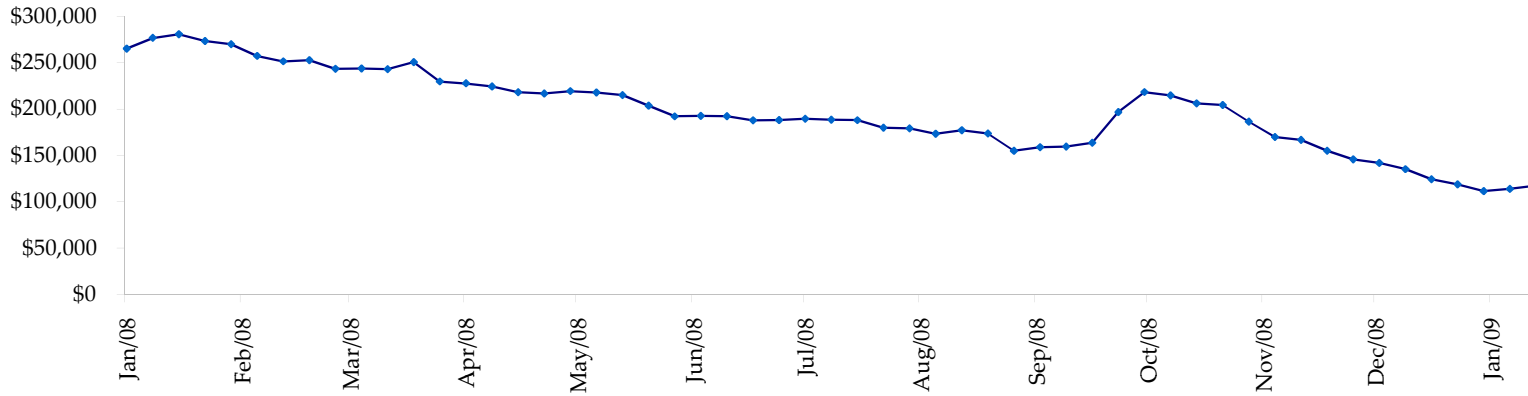


All dates are 'as of'.

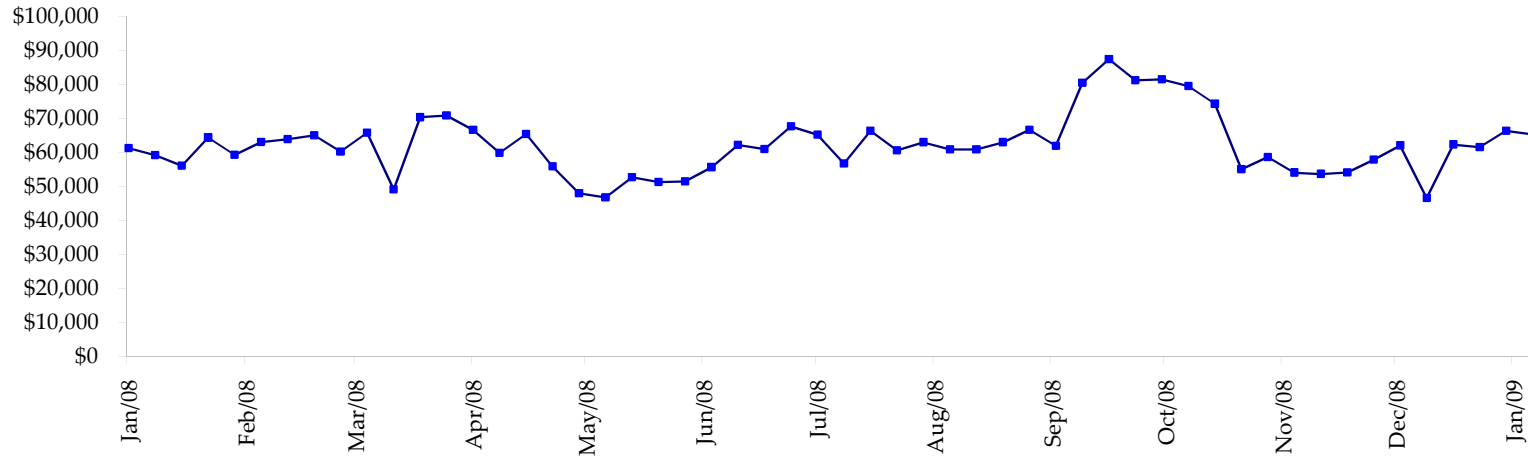
◆ T-Bills ◆ Due <= 3yrs ▲ Due >= 3yrs <=6yrs ■ Due >6yrs <=11yrs * Due >11yrs



Total Corporate Securities - (\$mln)



Total Mortgage Position - (\$mln)



We are interested in the last column, CIT % OI. That stands for Commercial Index Traders, percent Open Interest.

This table, compliments of CommitmentofTraders.com

Supplemental Commitments of Traders Report breaking out the Commercial Index Traders (CIT).
Analysis of open interest -with option deltas- as of 02/24/2009
Summary prepared by www.Commitments of Traders .com

Commodity	Small Sp			Large Sp			- No CIT			Commerc			- No CIT			CIT			Total	CIT
	NonRepo			Non Com			Comm			Comm			CIT			Open	% OI			
	Long	Short	Net	Long	Short	Net	Long	Short	Net	Long	Short	Net	Long	Short	Net			Interest		
Wheat	30081	51603	-21522	30675	67915	-37240	37555	111513	-73958	158273	25553	132720	360625	36%						
K C Wheat	16358	21734	-5376	12431	13383	-952	22065	36465	-14400	22635	1908	20727	82454	25%						
Corn	139679	213602	-73923	73756	140851	-67095	304055	392558	-88503	263151	33629	229522	1091888	21%						
Soybeans	44517	67095	-22578	37819	39198	-1379	85859	158091	-72232	111242	15054	96188	399233	24%						
Soybean Oil	23402	27863	-4461	14777	31433	-16656	85480	106877	-21397	47683	5169	42514	237776	17%						
Cotton	13097	15495	-2398	15283	26573	-11290	23564	72015	-48451	65979	3841	62138	157426	39%						
Lean Hogs	18561	25393	-6832	14730	24565	-9835	15969	45978	-30009	51747	5072	46675	140161	33%						
Lv Cattle	19522	44878	-25356	33006	36812	-3806	42645	96965	-54320	85503	2021	83482	248096	33%						
Feeder	6309	11824	-5515	3072	3376	-304	3864	3561	303	6310	794	5516	24062	22%						
Cocoa	8610	5296	3314	34492	16710	17782	47602	85152	-37550	16696	242	16454	129713	12%						
Sugar No 11	76010	57062	18948	103689	27715	75974	257056	512267	-255211	224654	64364	160290	853180	18%						
Coffee	8612	13020	-4408	20946	21581	-635	41713	69530	-27817	35645	2786	32859	153837	21%						
			-150107				-55436			-723545		929085	3878451	23%						

← Most Current Date

Supplemental Commitments of Traders Report breaking out the Commercial Index Traders (CIT).
Analysis of open interest -with option deltas- as of 02/17/2009
Summary prepared by www.Commitments of Traders .com

Commodity	Small Sp			Large Sp			- No CIT			Commerc			- No CIT			CIT			Total	CIT
	NonRepo			Non Com			Comm			Comm			CIT			Open	% OI			
	Long	Short	Net	Long	Short	Net	Long	Short	Net	Long	Short	Net	Long	Short	Net			Interest		
Wheat	30613	50900	-20287	30714	65053	-34339	38610	116718	-78108	160403	27669	132734	407203	32%						
K C Wheat	15333	21622	-6289	13895	13902	-7	25737	40154	-14417	22643	1929	20714	91142	22%						
Corn	139761	221728	-81967	75645	143130	-67485	342475	417510	-75035	267465	42978	224487	1225572	18%						
Soybeans	49147	73333	-24186	41143	32941	8202	103535	185596	-82061	114730	16685	98045	469299	20%						
Soybean Oil	27302	29854	-2552	16500	30740	-14240	103060	128834	-25774	48338	5772	42566	263380	16%						
Cotton	13828	14058	-230	16053	23533	-7480	22828	76862	-54034	65944	4200	61744	158471	38%						
Lean Hogs	20438	24328	-3890	16501	25985	-9484	14903	47659	-32756	51121	4991	46130	141616	32%						
Lv Cattle	21674	42438	-20764	30823	35428	-4605	41878	100025	-58147	85463	1948	83515	240544	34%						
Feeder	5956	11212	-5256	3044	2918	126	4483	4546	-63	6068	874	5194	23725	21%						
Cocoa	9356	4893	4463	36205	15792	20413	46584	87905	-41321	16669	223	16446	124784	13%						
Sugar No 11	91472	75369	16103	107812	25400	82412	261234	520398	-259164	230765	70117	160648	886498	18%						
Coffee	8218	7268	950	20437	19847	590	48016	82601	-34585	35817	2773	33044	159119	20%						
			-143905				-25897			-755465		925267	4191353	22%						

← Prior Week's Date