

**The Morning Email: Commitment of Traders (CoT) & Dealer Positions (DP)**

**Table of Contents**

- Pg 1** NYMEX: Energy Complex
- Pg 2** CME: Treasury Futures
- Pg 3** CME: Eurodollars
- Pg 4** Dealers: Total Securities Owned - GSE and Govs
- Pg 5** Dealers: Treasury Coupon Positions by Maturity
- Pg 6** Dealers: Total Corporate & Mortgage-backed Securites Owned
- Pg 7** CIT Positions

Want something added? Let me know: [jgoulding@ghco.com](mailto:jgoulding@ghco.com)

**Disclaimer:** All information within this newsletter is meant for internal use at GH Trader's LLC, only. All information has been recorded to the best of my ability. This material is based upon information that I consider reliable, but I do not represent that it is accurate or complete.

Current Positions										
	Small Spec			Large Spec			Commercials (Hedgers)			
	Long	Short	Net	Long	Short	Net	Long	Short	Net	
Crude Oil ^	79,528	77,683	1,845	208,006	118,298	89,708	1,524,386	1,615,939	(91,553)	Crude Oil
Heating Oil	45,034	33,272	11,762	29,472	18,148	11,324	177,490	200,576	(23,086)	Heating Oil
Unleaded Gas	22,105	16,438	5,667	57,903	5,898	52,005	129,028	186,701	(57,673)	Unleaded Gas
Natural Gas	82,531	42,457	40,074	146,392	158,825	(12,433)	323,940	351,580	(27,640)	Natural Gas
^ Light Sweet										
Week over Week Change										
As of	Sml Spec			Lrg Spec		Comm				
3/17/2009	Net			Net		Net				
Crude Oil	(8,310)			79,986		(71,677)				
Heating Oil	9,055			(38,784)		29,730				
Unleaded Gas	(31,050)			69,574		(38,525)				
Natural Gas	38,229			(102,141)		63,913				

Current Positions										
	Small Spec			Large Spec			Commercials (Hedgers)			
	Long	Short	Net	Long	Short	Net	Long	Short	Net	
ZF	164,542	162,713	1,829	97,524	78,029	19,495	634,448	655,772	(21,324)	ZF
ZN	231,162	243,172	(12,010)	75,331	149,870	(74,539)	856,493	769,943	86,550	ZN
ZB	119,004	158,513	(39,509)	37,903	138,666	(100,763)	591,018	450,746	140,272	ZB

	Week over Week Change		
As of	Sml Spec	Lrg Spec	Comm
3/17/2009	Net	Net	Net
ZF	(5,601)	(16,167)	21,769
ZN	18,107	(14,543)	(3,563)
ZB	9,902	1,191	(11,094)

Current Positions								
Small Spec			Large Spec			Commercials		
Long	Short	Net	Long	Short	Net	Long	Short	Net
814,840	818,870	(4,030)	448,768	258,581	190,187	5,453,805	5,639,963	(186,158)

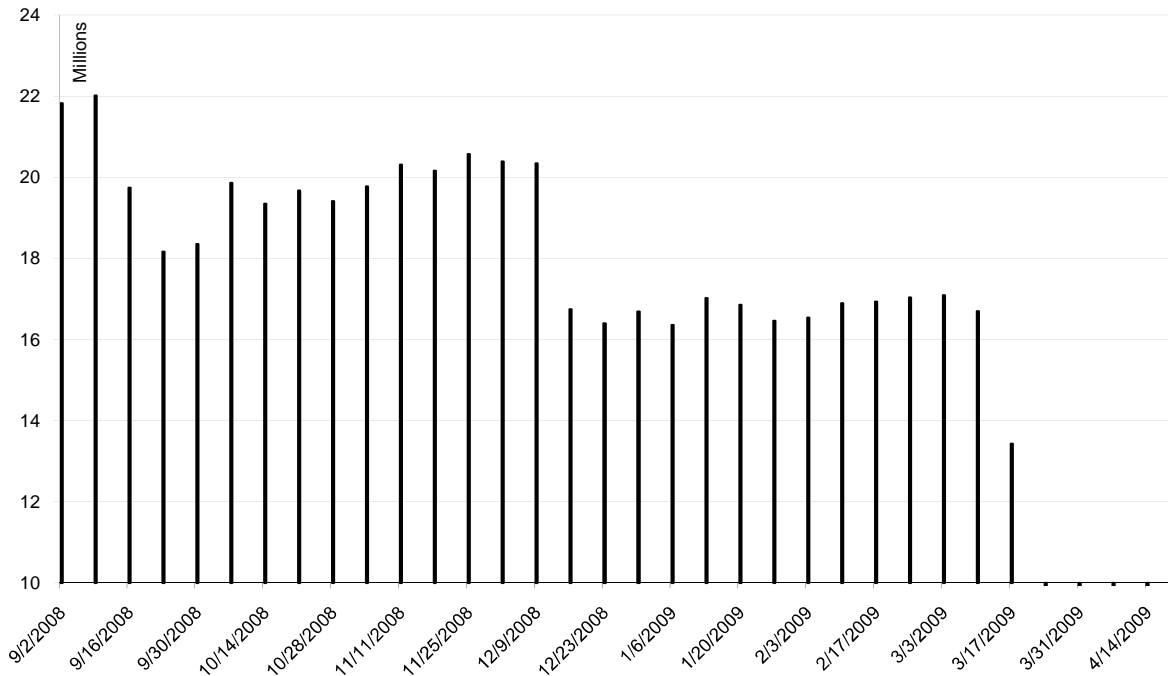
As of

3/17/2009

Week over Week Change

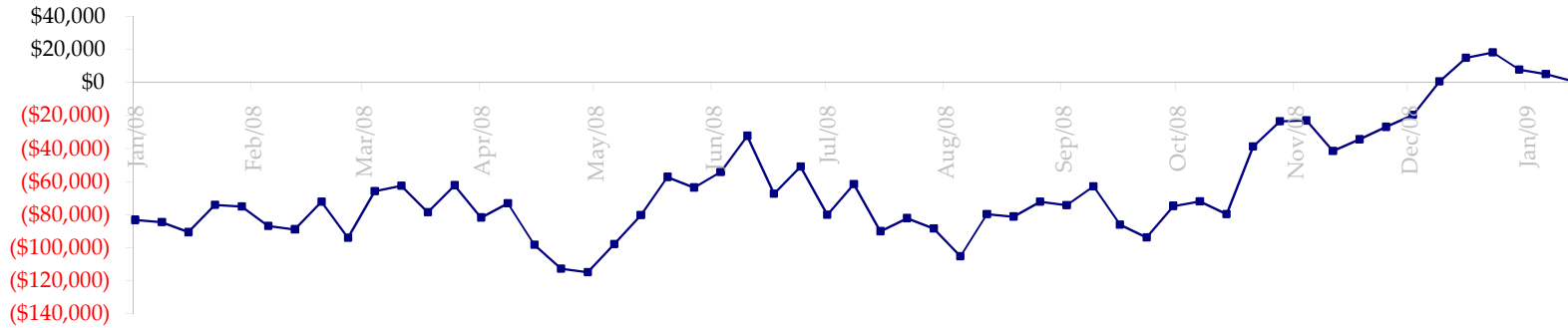
Sm Spec	Lg Spec	Commrcl
(29,151)	131,899	(102,749)

ED Total Open Interest

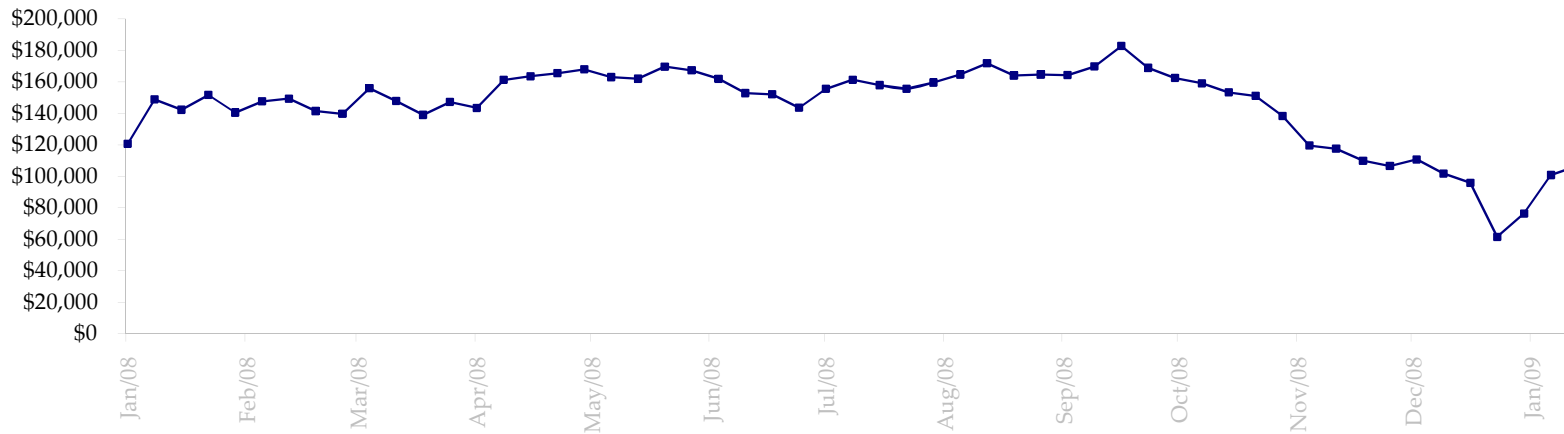


Date	Total O.I.
9/2/2008	21,823,622
9/9/2008	22,016,222
9/16/2008	19,740,627
9/23/2008	18,162,093
9/30/2008	18,354,501
10/7/2008	19,858,978
10/14/2008	19,350,280
10/21/2008	19,668,213
10/28/2008	19,408,426
11/4/2008	19,775,814
11/11/2008	20,306,045
11/18/2008	20,161,877
11/25/2008	20,573,000
12/2/2008	20,389,053
12/9/2008	20,341,452
12/16/2008	16,746,217
12/23/2008	16,398,154
12/30/2008	16,692,040
1/6/2009	16,353,766
1/13/2009	17,017,481
1/20/2009	16,856,304
1/27/2009	16,457,134
2/3/2009	16,535,902
2/10/2009	16,891,000
2/17/2009	16,931,894
2/24/2009	17,032,099
3/3/2009	17,094,554
3/10/2009	16,698,308
3/17/2009	13,434,827
3/24/2009	0
3/31/2009	0
4/7/2009	0
4/14/2009	0
4/21/2009	0

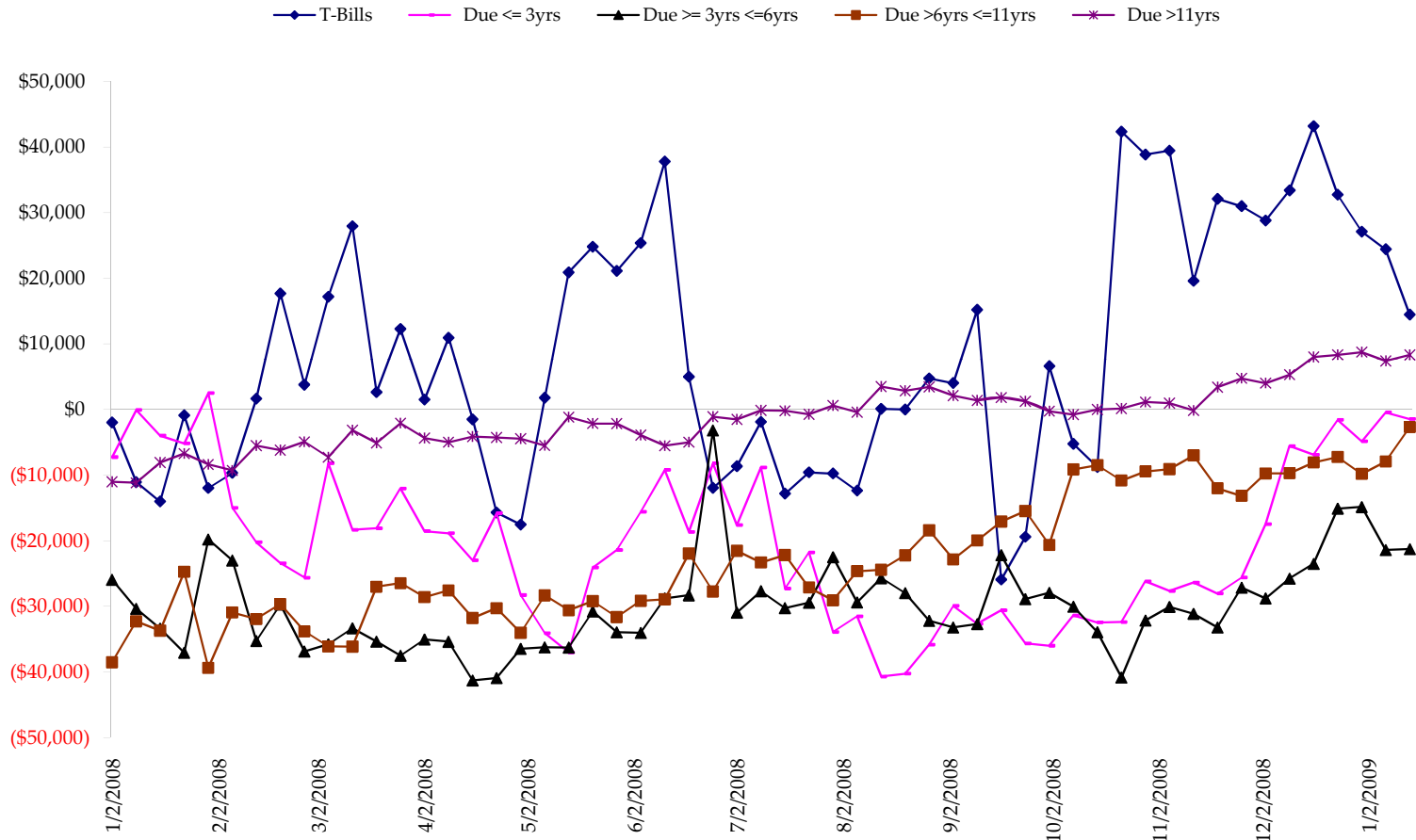
Total US Government Total Securities: Coupons - (\$mln)



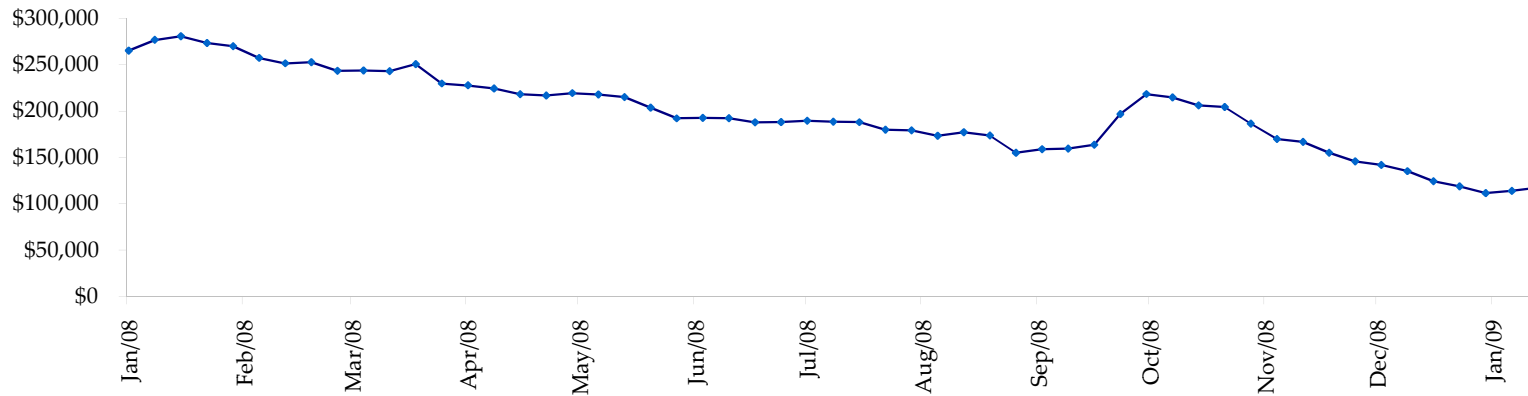
Fed Agency & GSE Total Securities: Coupons - (\$mln)



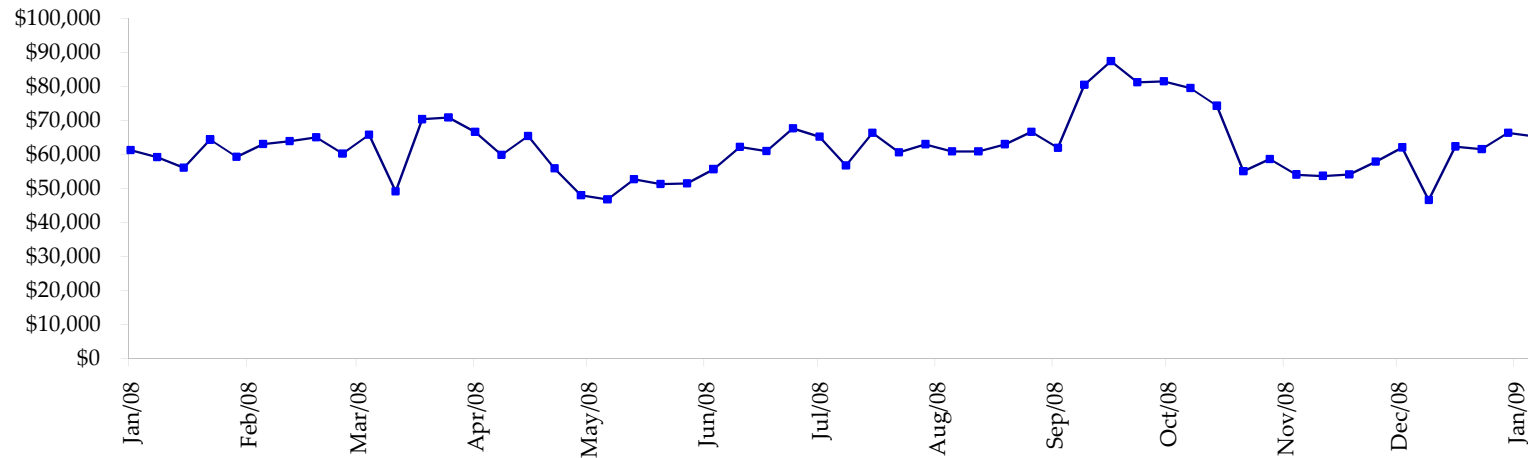
All dates are 'as of'.



Total Corporate Securities - (\$mln)



Total Mortgage Position - (\$mln)



We are interested in the last column, CIT % OI. That stands for Commercial Index Traders, percent Open Interest.

This table, compliments of CommitmentofTraders.com

**Supplemental Commitments of Traders Report breaking out the Commercial Index Traders (CIT).**  
**Analysis of open interest -with option deltas- as of 03/17/2009**  
**Summary prepared by www.Commitments of Traders .com**

Commodity	Small Spz NonRepo			Large Spz Non Com			- No CIT			Commerc Comm			- No CIT			CIT			Total Open Interest	CIT % OI
	Long	Short	Net	Long	Short	Net	Long	Short	Net	Long	Short	Net	Long	Short	Net	Long	Short	Net		
Wheat	29344	46844	-17500	34907	69393	-34486	47763	126623	-78860	160158	29313	130845	390190						33%	
K C Wheat	16454	22423	-5969	15558	12259	3299	19270	38475	-19205	22500	625	21875	84067						26%	
Corn	137579	209778	-72199	90362	78725	11637	298274	464324	-166050	270971	44360	226611	1160066						19%	
Soybeans	43156	65815	-22659	37550	38520	-970	81197	160185	-78988	118649	16032	102617	421601						24%	
Soybean Oil	24634	25322	-688	16971	43654	-26683	97955	107214	-9259	44696	8066	36630	240044						15%	
Cotton	14663	14684	-21	19356	30972	-11616	34904	81107	-46203	63401	5560	57841	175903						32%	
Lean Hogs	25312	30189	-4877	15263	26503	-11240	15195	51878	-36683	57884	5085	52799	152489						34%	
Lv Cattle	24961	46570	-21609	31914	40482	-8568	48955	101234	-52279	85235	2778	82457	251239						32%	
Feeder	7326	12251	-4925	3152	3846	-694	3745	3250	495	6433	1310	5123	25472						20%	
Cocoa	7370	6217	1153	30723	11883	18040	46694	79854	-33160	14300	1213	13167	127635						10%	
Sugar No 11	72087	67066	5021	98421	26695	71726	265486	511755	-246269	229456	59933	169523	869500						19%	
Coffee	8862	7556	1306	22012	25799	-3787	54724	82815	-28091	35593	5021	30572	173099						17%	
			-142967			7458			-794552			930060	4071305						22%	

← Most Current Date

**Supplemental Commitments of Traders Report breaking out the Commercial Index Traders (CIT).**  
**Analysis of open interest -with option deltas- as of 03/03/2009**  
**Summary prepared by www.Commitments of Traders .com**

Commodity	Small Spz NonRepo			Large Spz Non Com			- No CIT			Commerc Comm			- No CIT			CIT			Total Open Interest	CIT % OI
	Long	Short	Net	Long	Short	Net	Long	Short	Net	Long	Short	Net	Long	Short	Net	Long	Short	Net		
Wheat	29102	47350	-18248	29966	74304	-44338	38488	108404	-69916	159170	26667	132503	357899						37%	
K C Wheat	15437	21502	-6065	12139	14132	-1993	22069	34558	-12489	22414	1866	20548	81717						25%	
Corn	135813	215833	-80020	72583	132887	-60304	303568	393238	-89670	266906	36911	229995	1107615						20%	
Soybeans	42738	69036	-26298	34040	43591	-9551	87579	148057	-60478	110684	14357	96327	398374						24%	
Soybean Oil	22895	26690	-3795	16487	36577	-20090	94971	109707	-14736	44380	5759	38621	239878						16%	
Cotton	13037	16230	-3193	16432	30291	-13859	26036	70951	-44915	65687	3719	61968	161757						38%	
Lean Hogs	19899	24063	-4164	16086	25034	-8948	15081	47973	-32892	55654	9650	46004	142024						32%	
Lv Cattle	19308	43231	-23923	31813	39154	-7341	46223	97617	-51394	84991	2333	82658	247291						33%	
Feeder	6453	12407	-5954	3252	4138	-886	4003	3028	975	6542	678	5864	24563						23%	
Cocoa	7315	6061	1254	32071	16054	16017	47152	80148	-32996	16767	1041	15726	129743						12%	
Sugar No 11	74373	60357	14016	96112	30075	66037	245257	491149	-245892	225625	59787	165838	841474						19%	
Coffee	8647	8499	148	19261	26545	-7284	47015	72480	-25465	35594	2992	32602	161428						20%	
			-156242			-92540			-679868			928654	3893763						23%	

← Prior Week's Date