

The Morning Email: Commitment of Traders (CoT) & Dealer Positions (DP)

Table of Contents

- Pg 1** NYMEX: Energy Complex
- Pg 2** CME: Treasury Futures
- Pg 3** CME: Eurodollars
- Pg 4** Dealers: Total Securities Owned - GSE and Govs
- Pg 5** Dealers: Treasury Coupon Positions by Maturity
- Pg 6** Dealers: Total Corporate & Mortgage-backed Securitites Owned
- Pg 7** CIT Positions

Want something added? Let me know: jgoulding@ghco.com

Disclaimer: All information within this newsletter is meant for internal use at GH Trader's LLC, only. All information has been recorded to the best of my ability. This material is based upon information that I consider reliable, but I do not represent that it is accurate or complete.

	Current Positions									
	Small Spec			Large Spec			Commercials (Hedgers)			
	Long	Short	Net	Long	Short	Net	Long	Short	Net	
Crude Oil ^	85,985	74,900	11,085	189,065	113,918	75,147	1,467,283	1,553,516	(86,233)	Crude Oil
Heating Oil	45,868	30,225	15,643	35,562	14,966	20,596	162,387	198,624	(36,237)	Heating Oil
Unleaded Gas	21,842	19,011	2,831	54,434	8,238	46,196	137,361	186,388	(49,027)	Unleaded Gas
Natural Gas	87,425	42,775	44,650	137,851	169,510	(31,659)	334,165	347,156	(12,991)	Natural Gas

^ Light Sweet

As of	Week over Week Change			
	Sml Spec	Lrg Spec	Comm	
	Net	Net	Net	
4/21/2009	Crude Oil	(6,342)	51,864	(45,522)
	Heating Oil	10,368	(27,013)	16,647
	Unleaded Gas	(45,290)	81,721	(36,430)
	Natural Gas	33,565	(106,806)	73,242

Current Positions										
	Small Spec			Large Spec			Commercials (Hedgers)			
	Long	Short	Net	Long	Short	Net	Long	Short	Net	
ZF	148,988	170,591	(21,603)	79,536	67,758	11,778	582,135	572,310	9,825	ZF
ZN	231,577	270,175	(38,598)	71,160	137,967	(66,807)	909,884	804,480	105,404	ZN
ZB	116,874	145,159	(28,285)	37,005	110,150	(73,145)	580,595	479,164	101,431	ZB

Week over Week Change				
As of		Sml Spec	Lrg Spec	Comm
4/21/2009		Net	Net	Net
	ZF	(44,050)	4,235	39,814
	ZN	5,897	(52,931)	47,032
	ZB	(5,712)	(1,323)	7,036

Current Positions								
Small Spec			Large Spec			Commercials		
Long	Short	Net	Long	Short	Net	Long	Short	Net
911,778	840,951	70,827	509,566	246,910	262,656	5,770,217	6,103,700	(333,483)

As of

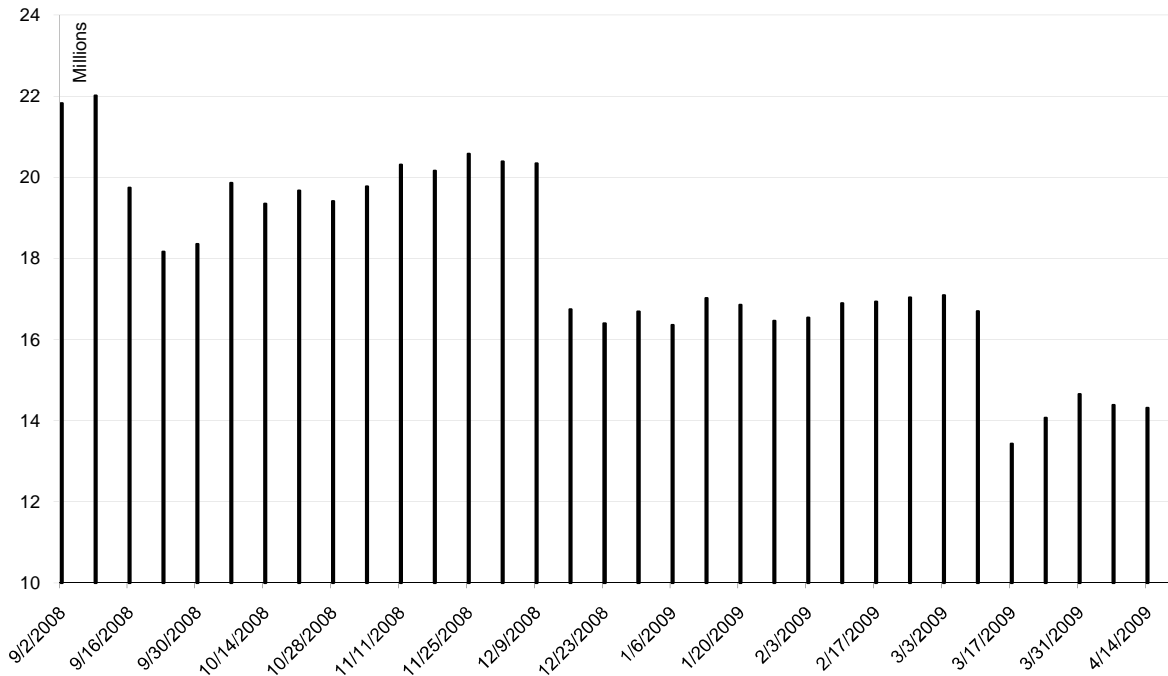
4/21/2009

Week over Week Change

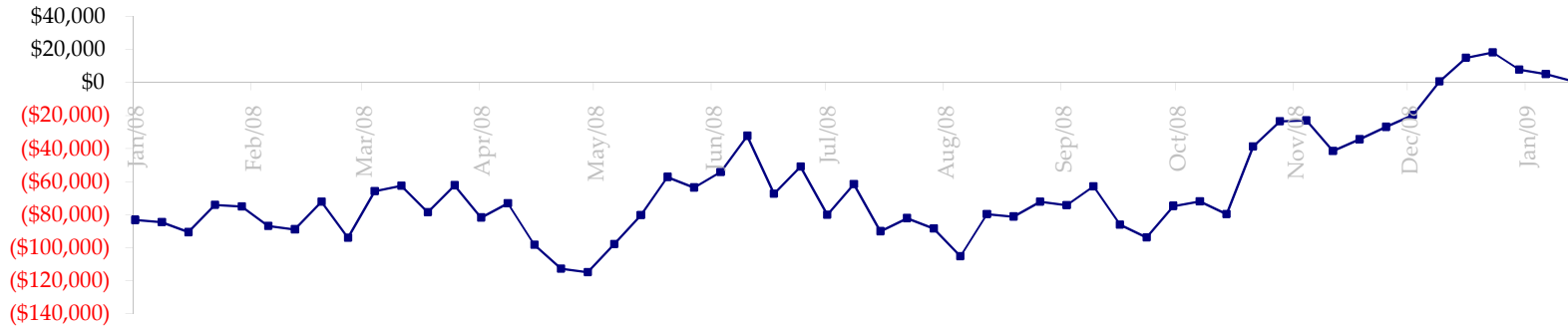
Sm Spec	Lg Spec	Commrc
(55,583)	(119,767)	175,349

Date	Total O.I.
9/2/2008	21,823,622
9/9/2008	22,016,222
9/16/2008	19,740,627
9/23/2008	18,162,093
9/30/2008	18,354,501
10/7/2008	19,858,978
10/14/2008	19,350,280
10/21/2008	19,668,213
10/28/2008	19,408,426
11/4/2008	19,775,814
11/11/2008	20,306,045
11/18/2008	20,161,877
11/25/2008	20,573,000
12/2/2008	20,389,053
12/9/2008	20,341,452
12/16/2008	16,746,217
12/23/2008	16,398,154
12/30/2008	16,692,040
1/6/2009	16,353,766
1/13/2009	17,017,481
1/20/2009	16,856,304
1/27/2009	16,457,134
2/3/2009	16,535,902
2/10/2009	16,891,000
2/17/2009	16,931,894
2/24/2009	17,032,099
3/3/2009	17,094,554
3/10/2009	16,698,308
3/17/2009	13,434,827
3/24/2009	14,073,250
3/31/2009	14,657,253
4/7/2009	14,384,480
4/14/2009	14,314,271
4/21/2009	14,383,122
4/28/2009	0
5/5/2009	0
5/12/2009	0

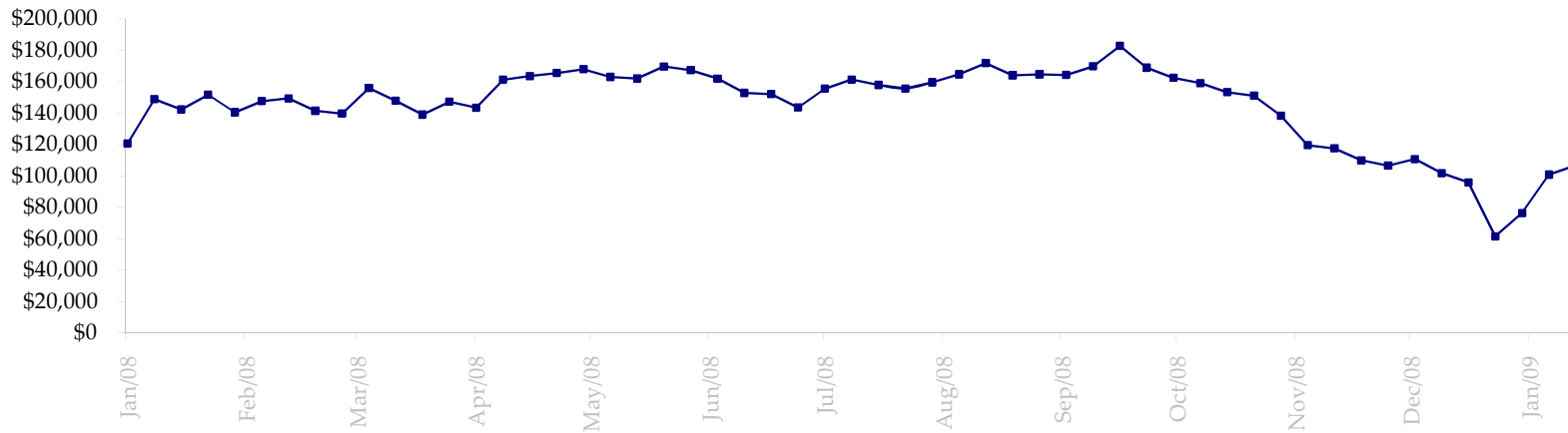
ED Total Open Interest



Total US Government Total Securities: Coupons - (\$mln)

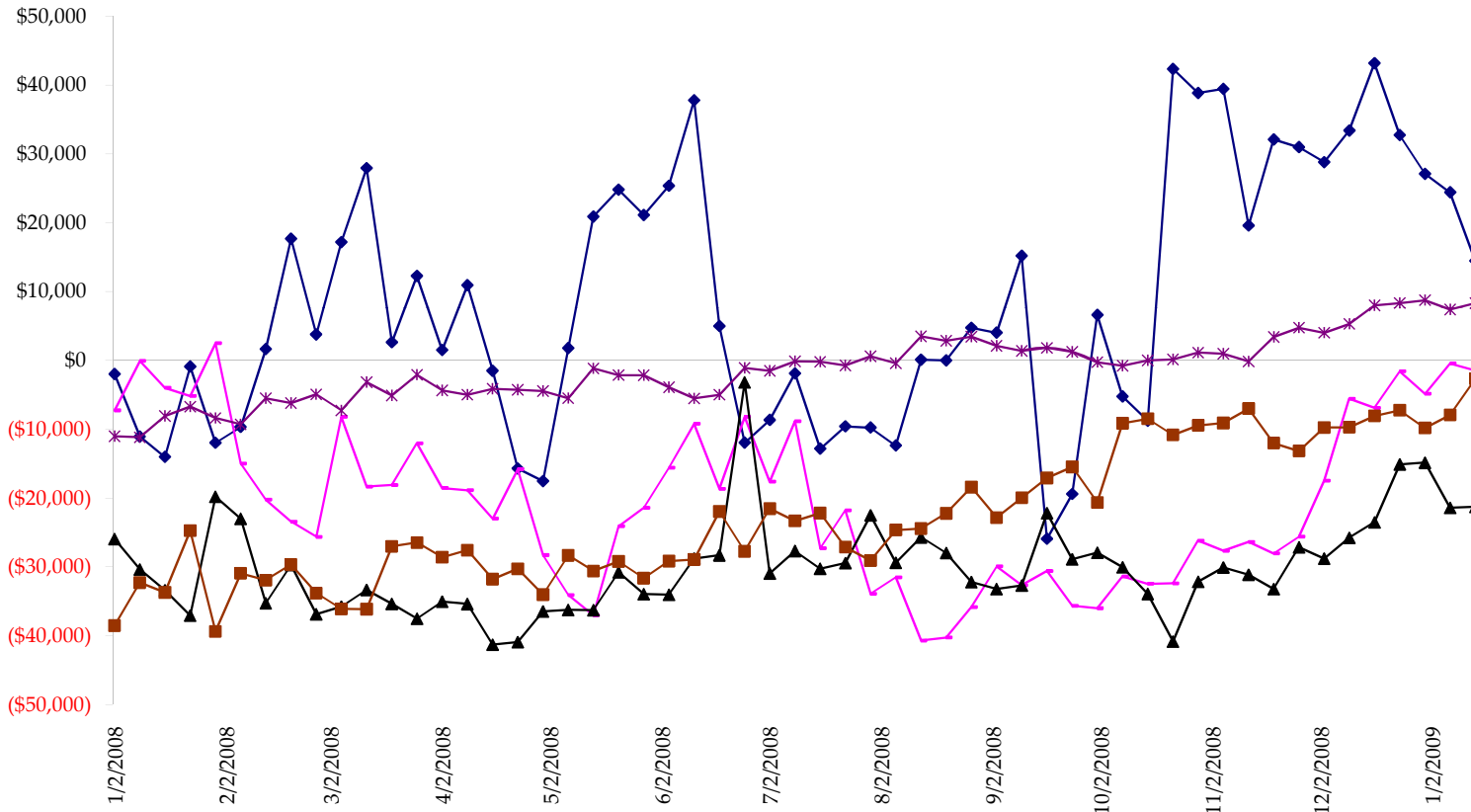


Fed Agency & GSE Total Securities: Coupons - (\$mln)

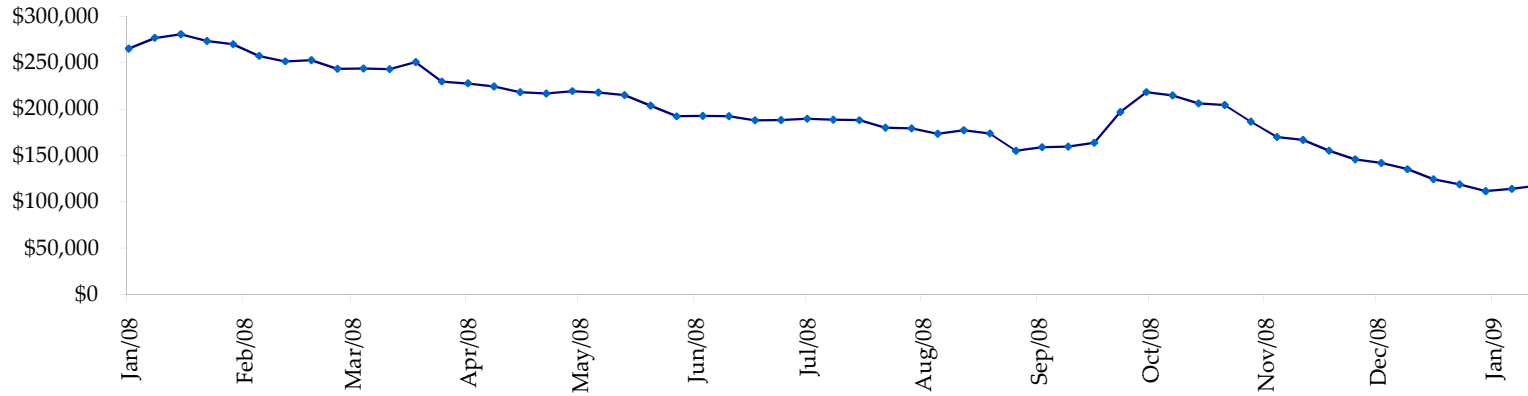


All dates are 'as of'.

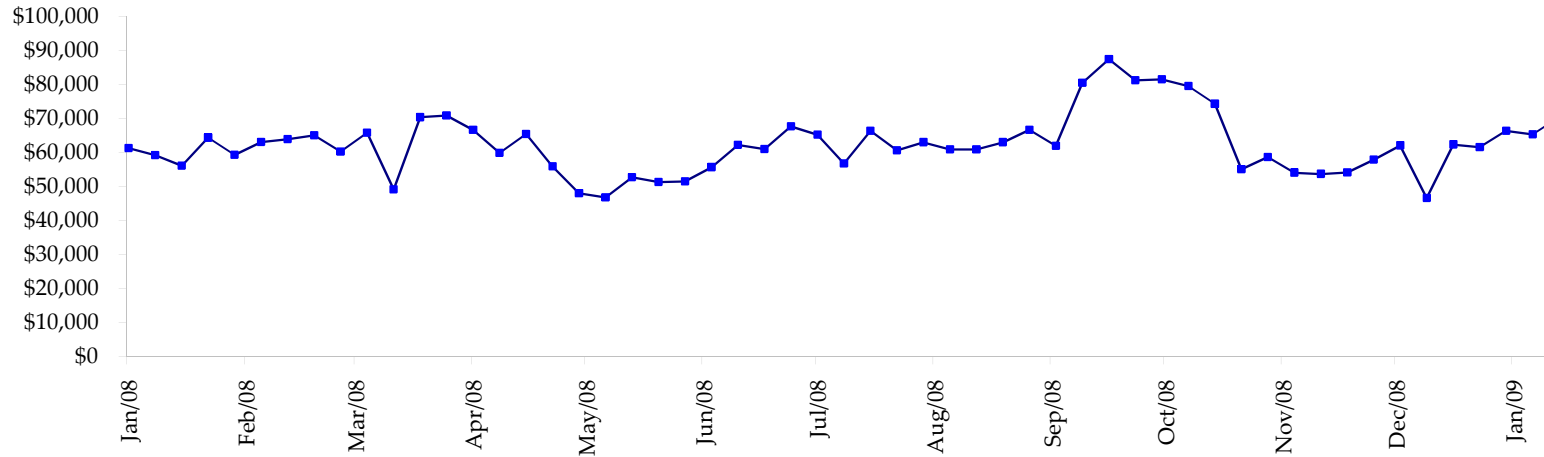
◆ T-Bills ◆ Due <= 3yrs ▲ Due >= 3yrs <=6yrs ■ Due >6yrs <=11yrs * Due >11yrs



Total Corporate Securities - (\$mln)



Total Mortgage Position - (\$mln)



We are interested in the last column, CIT % OI. That stands for Commercial Index Traders, percent Open Interest.

This table, compliments of CommitmentofTraders.com

Supplemental Commitments of Traders Report breaking out the Commercial Index Traders (CIT).															
Analysis of open interest -with option deltas- as of 04/21/2009															
Summary prepared by www.Commitments of Traders .com															
Commodity	Small Spc			Large Sp			- No CIT			CIT			Total	CIT	
	NonRepo			Non Com			Commrc			Long	Short	Net	Open	% OI	
	Long	Short	Net	Long	Short	Net	Long	Short	Net	Long	Short	Net	Interest		
Wheat	30774	48301	-17527	32259	77121	-44862	55017	133356	-78339	160273	19545	140728	409641	34%	
K C Wheat	16962	23476	-6514	9838	11438	-1600	21718	38725	-17007	26982	1862	25120	87050	28%	
Corn	127963	222528	-94565	94291	122856	-28565	313447	448044	-134597	302164	44437	257727	1234636	20%	
Soybeans	47889	76671	-28782	89182	18465	70717	87591	247364	-159773	135985	18147	117838	537107	21%	
Soybean Oil	31121	20564	10557	23567	24742	-1175	74619	132853	-58234	53422	4569	48853	252691	19%	
Cotton	16840	8569	8271	22389	12958	9431	22323	101147	-78824	65472	4350	61122	166387	36%	
Lean Hogs	24273	25819	-1546	12065	29455	-17390	12483	46629	-34146	56202	3120	53082	153594	34%	
Lv Cattle	25323	39261	-13938	36180	36248	-68	41298	108166	-66868	82140	1265	80875	242589	33%	
Feeder	5781	10441	-4660	3082	2145	937	3036	5306	-2270	6173	179	5994	22555	26%	
Cocoa	6749	4867	1882	28454	11408	17046	50544	85249	-34705	15956	180	15776	124157	12%	
Sugar No 11	73015	59294	13721	99541	36806	62735	274706	541844	-267138	244853	54172	190681	875942	21%	
Coffee	8457	8214	243	24211	21696	2515	44650	81369	-36719	37689	3728	33961	155916	21%	
			-132858			69721			-968620				1031757	4262265	24%

← Most Current Date

Supplemental Commitments of Traders Report breaking out the Commercial Index Traders (CIT).															
Analysis of open interest -with option deltas- as of 04/14/2009															
Summary prepared by www.Commitments of Traders .com															
Commodity	Small Spc			Large Sp			- No CIT			CIT			Total	CIT	
	NonRepo			Non Com			Commrc			Long	Short	Net	Open	% OI	
	Long	Short	Net	Long	Short	Net	Long	Short	Net	Long	Short	Net	Interest		
Wheat	31029	49665	-18636	32036	66646	-34610	56326	142715	-86389	158530	18897	139633	409932	34%	
K C Wheat	17357	23022	-5665	10124	8434	1690	21628	43128	-21500	26985	1510	25475	87801	29%	
Corn	137895	225120	-87225	101727	82338	19389	308514	494817	-186303	294388	40248	254140	1245011	20%	
Soybeans	52798	78409	-25611	79512	17572	61940	80437	230321	-149884	130934	17379	113555	512878	22%	
Soybean Oil	32134	19455	12679	21602	24670	-3068	82981	138573	-55592	50085	4105	45980	254905	18%	
Cotton	17165	10378	6787	22084	14554	7530	28630	104302	-75672	65736	4381	61355	172678	35%	
Lean Hogs	25004	26191	-1187	11699	28804	-17105	16418	50469	-34051	55056	2714	52342	164254	31%	
Lv Cattle	24047	39825	-15778	37293	36358	935	43963	109397	-65434	81116	840	80276	240110	33%	
Feeder	5203	10363	-5160	2645	2185	460	3237	4507	-1270	6191	222	5969	21477	27%	
Cocoa	7660	5904	1756	33278	11391	21887	50264	89403	-39139	15755	258	15497	127423	12%	
Sugar No 11	74508	66712	7796	98867	33920	64947	297485	559638	-262153	260366	70957	189409	938749	20%	
Coffee	9071	7462	1609	23223	17360	5863	54463	95329	-40866	37933	4538	33395	167229	19%	
			-128635			129858			-1018253				1017026	4342447	23%

← Prior Week's Date