

The Morning Email: Commitment of Traders (CoT) & Dealer Positions (DP)

Table of Contents

- Pg 1** NYMEX: Energy Complex
- Pg 2** CME: Treasury Futures
- Pg 3** CME: Eurodollars
- Pg 4** Dealers: Total Securities Owned - GSE and Govs
- Pg 5** Dealers: Treasury Coupon Positions by Maturity
- Pg 6** Dealers: Total Corporate & Mortgage-backed Securites Owned
- Pg 7** CIT Positions

Want something added? Let me know: jgoulding@ghco.com

Disclaimer: All information within this newsletter is meant for internal use at GH Trader's LLC, only. All information has been recorded to the best of my ability. This material is based upon information that I consider reliable, but I do not represent that it is accurate or complete.

	Current Positions									
	Small Spec			Large Spec			Commercials (Hedgers)			
	Long	Short	Net	Long	Short	Net	Long	Short	Net	
Crude Oil ^	136,998	126,841	10,157	174,348	98,999	75,349	1,485,813	1,571,319	(85,506)	Crude Oil
Heating Oil	46,778	33,558	13,220	32,657	12,580	20,077	158,074	191,371	(33,297)	Heating Oil
Unleaded Gas	22,985	19,286	3,699	63,979	7,604	56,375	134,091	194,165	(60,074)	Unleaded Gas
Natural Gas	89,847	45,308	44,539	141,295	196,445	(55,150)	347,247	336,634	10,613	Natural Gas
^ Light Sweet										
	Week over Week Change									
As of				Sml Spec	Lrg Spec	Comm				
5/12/2009				Net	Net	Net				
				Crude Oil	(763)	56,984	(56,221)			
				Heating Oil	7,782	(31,293)	23,511			
				Unleaded Gas	(36,930)	89,196	(52,267)			
				Natural Gas	34,382	(130,499)	96,119			

Current Positions										
	Small Spec			Large Spec			Commercials (Hedgers)			
	Long	Short	Net	Long	Short	Net	Long	Short	Net	
ZF	167,619	186,267	(18,648)	111,386	80,328	31,058	579,347	591,757	(12,410)	ZF
ZN	232,826	295,223	(62,397)	78,086	156,915	(78,829)	1,001,326	860,101	141,225	ZN
ZB	122,873	157,730	(34,857)	39,378	135,270	(95,892)	580,342	449,594	130,748	ZB

	Week over Week Change		
As of	Sml Spec	Lrg Spec	Comm
5/12/2009	Net	Net	Net
ZF	1,184	(7,619)	6,435
ZN	(6,494)	29,709	(23,215)
ZB	(451)	(25,564)	26,015

Current Positions								
Small Spec			Large Spec			Commercials		
Long	Short	Net	Long	Short	Net	Long	Short	Net
1,033,581	873,461	160,120	743,936	242,564	501,372	6,243,620	6,905,113	(661,493)

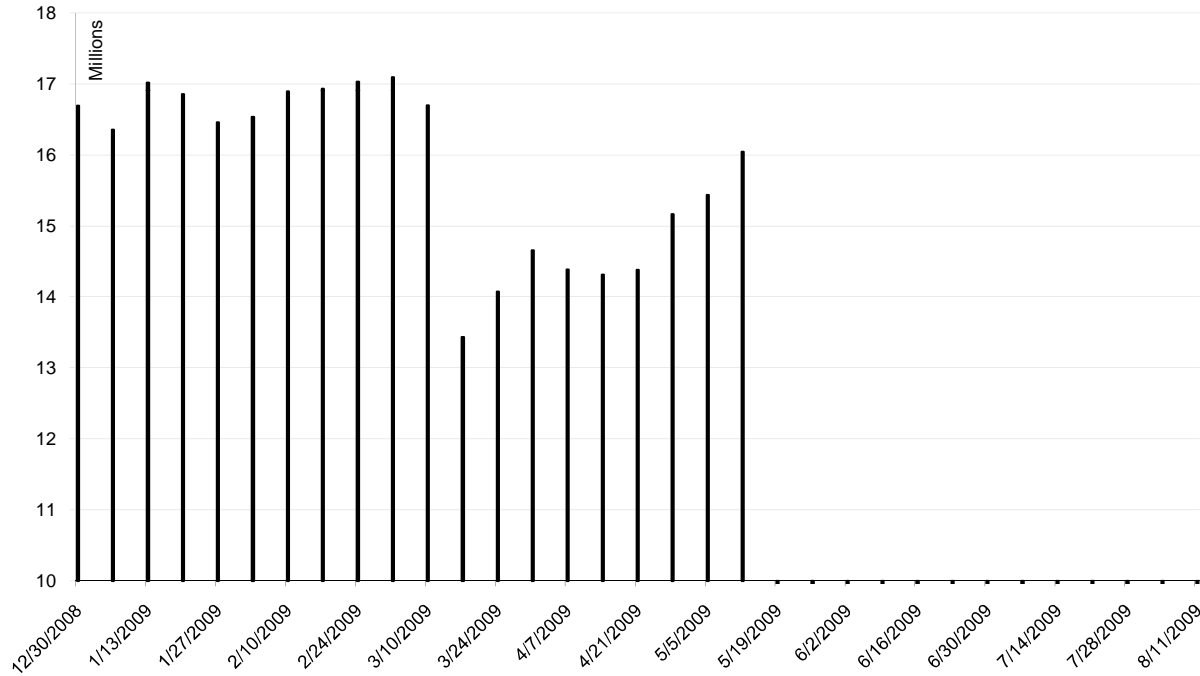
As of

5/12/2009

Week over Week Change

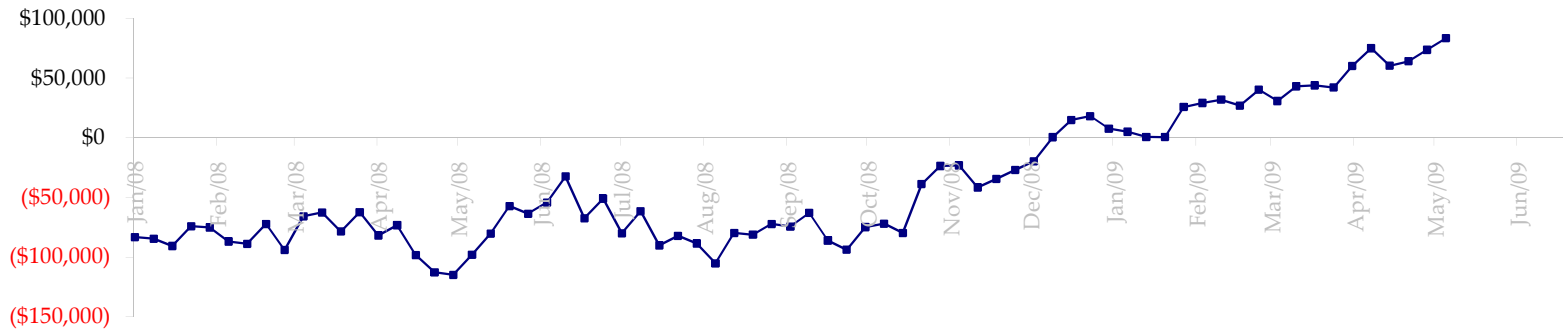
Sm Spec	Lg Spec	Commrc
73,812	169,969	(243,783)

ED Total Open Interest

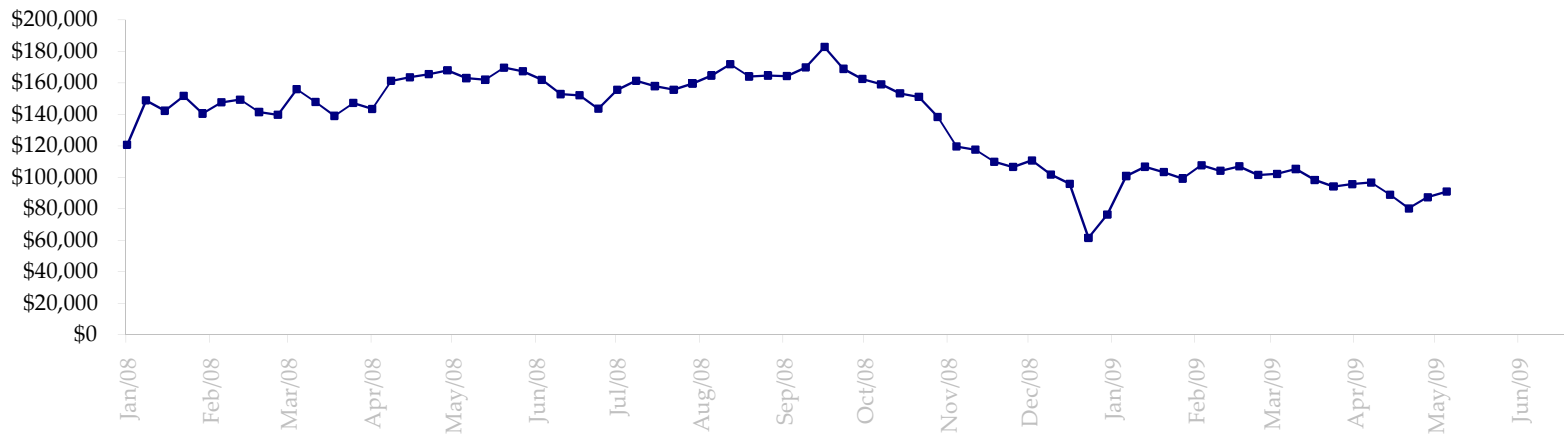


Date	Total O.I.
12/30/2008	16,692,040
1/6/2009	16,353,766
1/13/2009	17,017,481
1/20/2009	16,856,304
1/27/2009	16,457,134
2/3/2009	16,535,902
2/10/2009	16,891,000
2/17/2009	16,931,894
2/24/2009	17,032,099
3/3/2009	17,094,554
3/10/2009	16,698,308
3/17/2009	13,434,827
3/24/2009	14,073,250
3/31/2009	14,657,253
4/7/2009	14,384,480
4/14/2009	14,314,271
4/21/2009	14,383,122
4/28/2009	15,165,072
5/5/2009	15,434,647
5/12/2009	16,042,275
5/19/2009	0
5/26/2009	0
6/2/2009	0
6/9/2009	0
6/16/2009	0
6/23/2009	0
6/30/2009	0
7/7/2009	0
7/14/2009	0
7/21/2009	0
7/28/2009	0
8/4/2009	0
8/11/2009	0

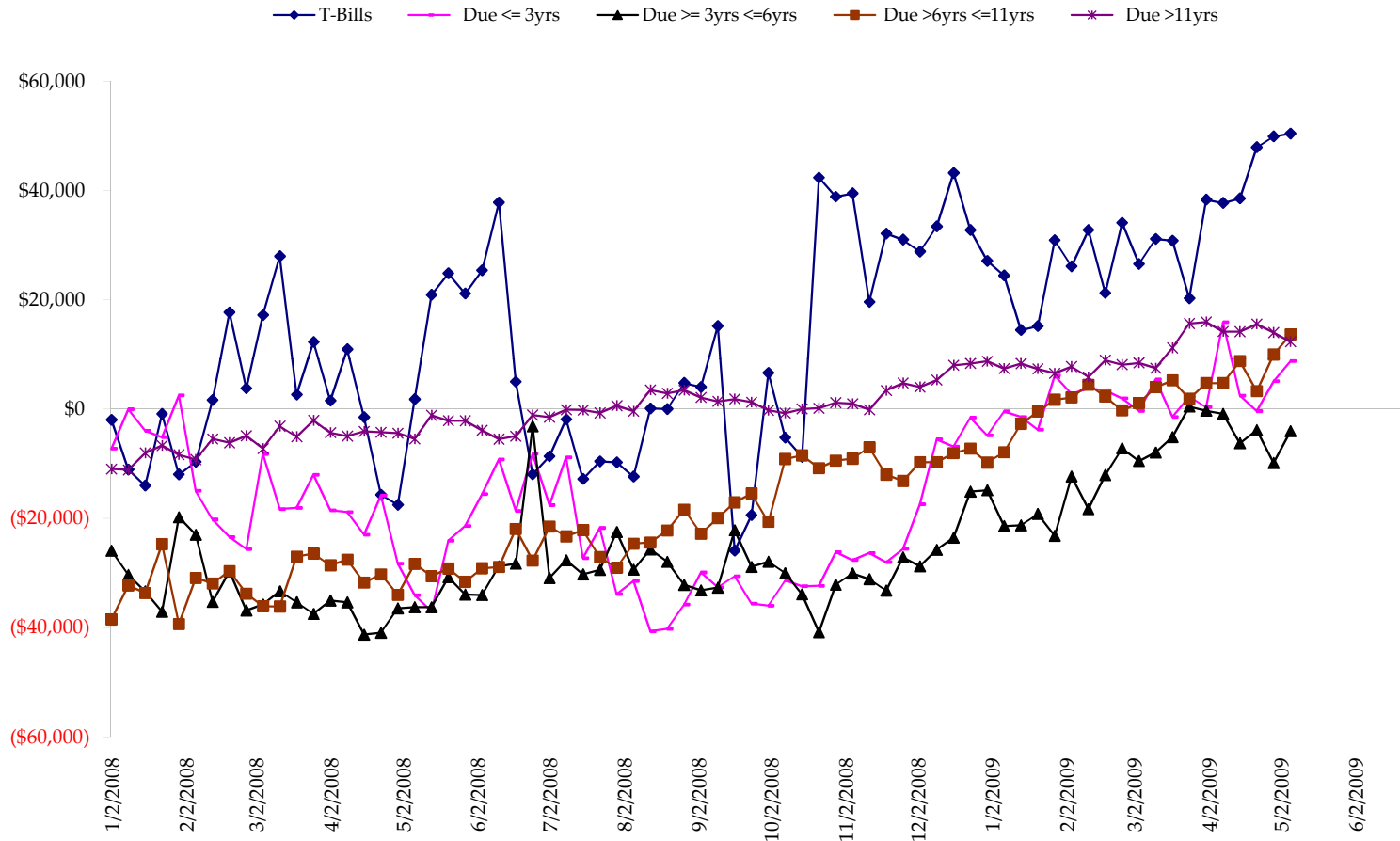
Total US Government Total Securities: Coupons - (\$mln)



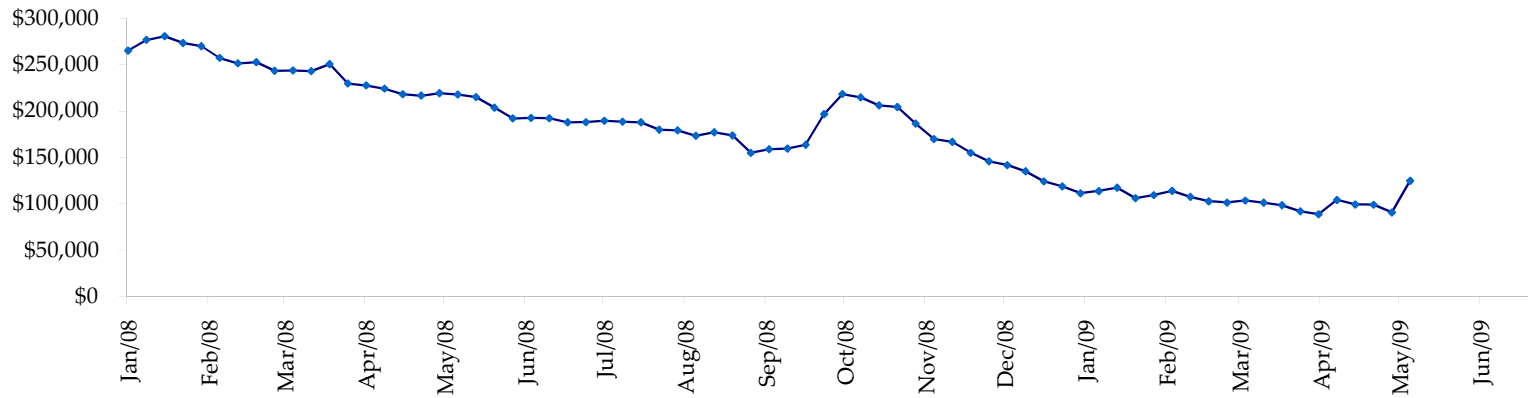
Fed Agency & GSE Total Securities: Coupons - (\$mln)



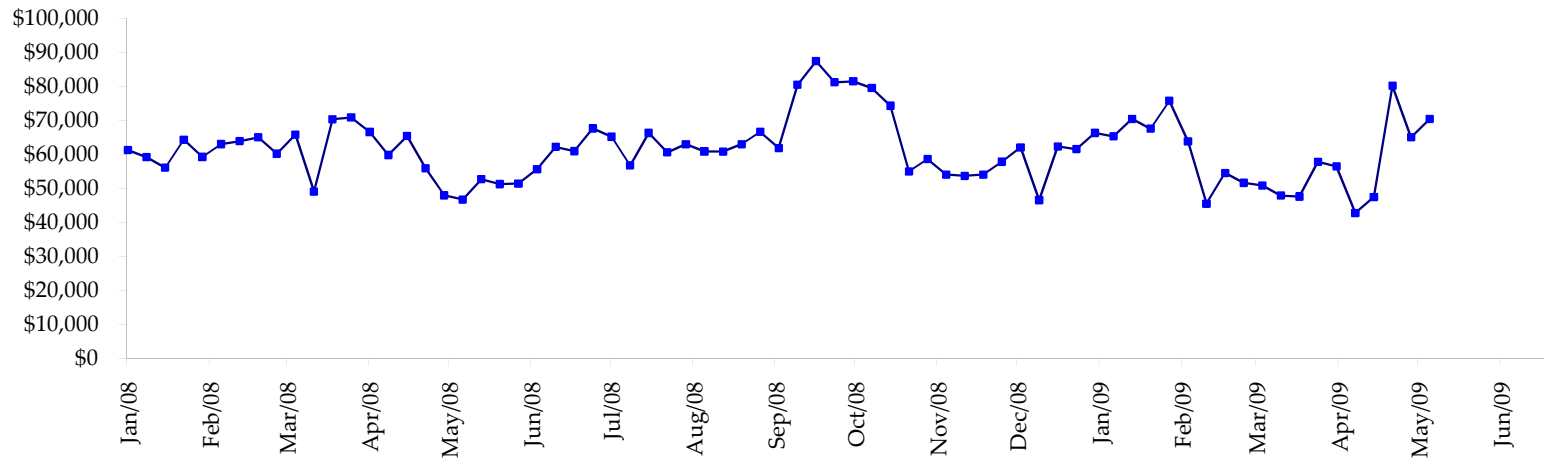
All dates are 'as of'.



Total Corporate Securities - (\$mln)



Total Mortgage Position - (\$mln)



We are interested in the last column, CIT % OI. That stands for Commercial Index Traders, percent Open Interest.

This table, compliments of CommitmentofTraders.com

Supplemental Commitments of Traders Report breaking out the Commercial Index Traders (CIT).															
Analysis of open interest -with option deltas- as of 05/12/2009															
Summary prepared by www.Commitments of Traders .com															
Commodity	Small Spc			Large Sp			- No CIT			Commerc			CIT	Total	CIT
	NonRepo			Non Com			Comm			Long	Short	Net			
	Long	Short	Net	Long	Short	Net	Long	Short	Net	Long	Short	Net	Interest		
Wheat	32061	47305	-15244	50433	70345	-19912	56069	154515	-98446	154636	21035	133601	393948	33%	
K C Wheat	18816	22910	-4294	10159	4461	5698	16100	43872	-27772	27054	686	26368	82846	31%	
Corn	135781	233096	-97315	149517	85052	64465	295215	530504	-235289	308944	40805	268139	1264514	21%	
Soybeans	63442	87719	-24277	98935	16183	82752	88989	271055	-182066	143052	19463	123589	568273	21%	
Soybean Oil	34377	18339	16038	39444	24510	14934	63001	143880	-80879	52978	3071	49907	252243	19%	
Cotton	18062	8021	10041	33013	5863	27150	35223	132064	-96841	62933	3283	59650	199798	29%	
Lean Hogs	24460	25176	-716	20159	40851	-20692	16811	43699	-26888	54221	5926	48295	169405	28%	
Lv Cattle	28853	42947	-14094	35346	41368	-6022	42745	105567	-62822	84410	1472	82938	245793	33%	
Feeder	5462	9110	-3648	3487	2813	674	4223	7475	-3252	6387	161	6226	24114	25%	
Cocoa	7765	6140	1625	25006	13198	11808	57790	86884	-29094	16298	636	15662	129497	12%	
Sugar No 11	92759	52028	40731	141516	15571	125945	236933	598500	-361567	259607	64716	194891	968675	20%	
Coffee	11436	8650	2786	29514	12194	17320	41412	95916	-54504	38326	3929	34397	167888	20%	
			-88367			304120			-1259420			1043663	4466994	23%	
Analysis of open interest -with option deltas- as of 05/05/2009															
Summary prepared by www.Commitments of Traders .com															
Commodity	Small Spc			Large Sp			- No CIT			Commerc			CIT	Total	CIT
	NonRepo			Non Com			Comm			Long	Short	Net			
	Long	Short	Net	Long	Short	Net	Long	Short	Net	Long	Short	Net	Interest		
Wheat	31113	46846	-15733	43673	73199	-29526	47968	141644	-93676	158988	20054	138934	375260	37%	
K C Wheat	17076	22983	-5907	10495	8213	2282	16211	37363	-21152	25899	1122	24777	80581	30%	
Corn	117971	209224	-91253	114403	105732	8671	271817	459509	-187692	311910	41636	270274	1175078	23%	
Soybeans	57781	82835	-25054	95546	19270	76276	83248	261357	-178109	145883	18995	126888	548869	23%	
Soybean Oil	33699	19203	14496	31157	25027	6130	62066	134538	-72472	55170	3325	51845	244315	21%	
Cotton	17102	6619	10483	28863	6422	22441	27798	122454	-94656	66458	4726	61732	184510	33%	
Lean Hogs	23264	26190	-2926	22078	40399	-18321	12490	42851	-30361	56569	4961	51608	162322	31%	
Lv Cattle	25666	38069	-12403	34598	41547	-6949	40443	104436	-63993	85419	2075	83344	245416	33%	
Feeder	5305	8736	-3431	3029	3351	-322	3868	6262	-2394	6309	161	6148	22428	27%	
Cocoa	6695	6133	562	25120	11366	13754	54156	83852	-29696	16371	991	15380	125691	12%	
Sugar No 11	91933	52050	39883	129028	15928	113098	229057	582620	-353563	265138	64554	200584	929344	21%	
Coffee	10810	8761	2049	28136	17206	10930	39785	88359	-48574	39252	3658	35594	162761	21%	
			-89234			198464			-1176338			1067108	4256575	25%	

Most Current Date

Prior Week's Date